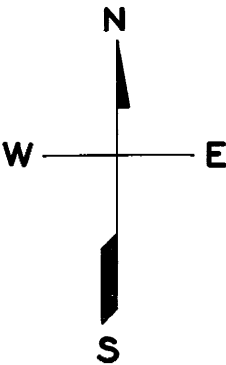


© COPYRIGHT SAN FRANCISCO
CITY & COUNTY ASSESSOR 1995

lot6 into lots23/25 for 2002 roll
lot3 into lots18to20 for 2004 roll
lot5 into lots31&32 for 2009 roll
lot2 into lots33to35 for 2014 roll

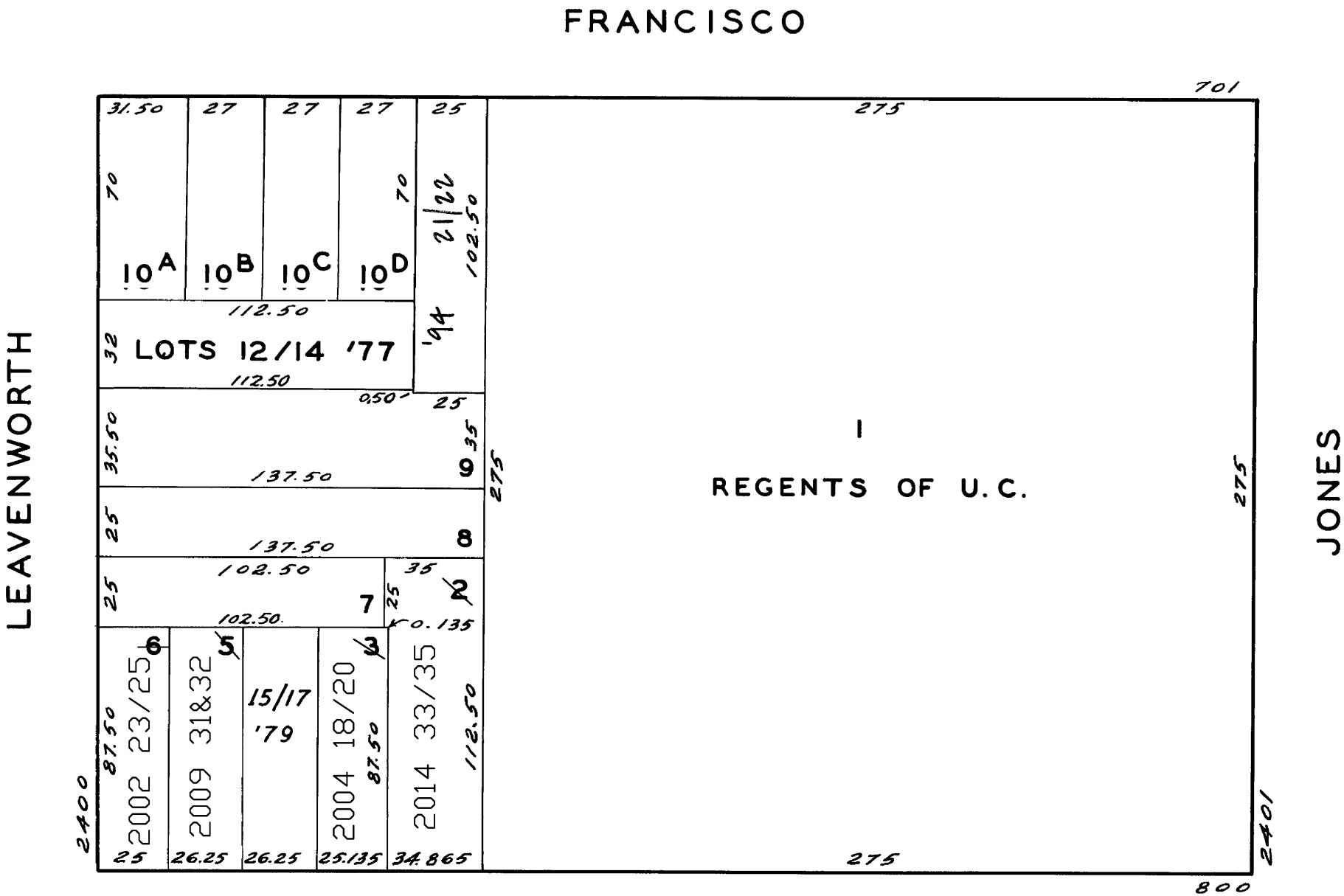
REVISED '77
 '79
 " '94

Revised 2002
Revised 2004
Revised 2009
Revised 2014



769-771 FRANCISCO ST.

<u>A CONDOMINIUM</u>		
<u>LOT</u>	<u>UNIT</u>	<u>% COMM. AREA</u>
21	769	39.04
22	771	66.96



876-880 CHESTNUT ST.

<u>A CONDOMINIUM</u>		
<u>LOT</u>	<u>UNIT</u>	<u>% COMM. AREA</u>
18	876	31.982
19	878	32.263
20	880	35.755

894-898 CHESTNUT ST.

<u>A CONDOMINIUM</u>		
<u>LOT</u>	<u>UNIT</u>	<u>% COMM. AREA</u>
23	894	36.00
24	896	34.00
25	898	30.00

BAY VIEW NORTH

<u>A CONDOMINIUM</u>		
<u>LOT NO.</u>	<u>UNIT NO.</u>	<u>% COMMON AREA</u>
12	1	36.748
13	2	33.692
14	3	29.560

882,884,886 CHESTNUT

<u>A CONDOMINIUM</u>		
<u>LOT NO.</u>	<u>UNIT NO.</u>	<u>% COMMON AREA</u>
15	1	.333
16	2	.333
17	3	.333

ASSESSED 37,813 SQ. FT.
REGENTS U.C. 75,625
BLK. TOTAL 113,438 SQ. FT.