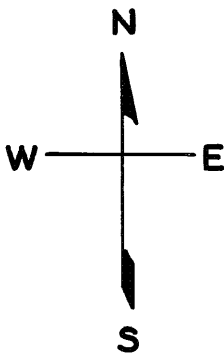


LOTS MERGED  
LOT 27 INTO W/1A - 1942  
lot22 into lots 40&41 for 2005 roll

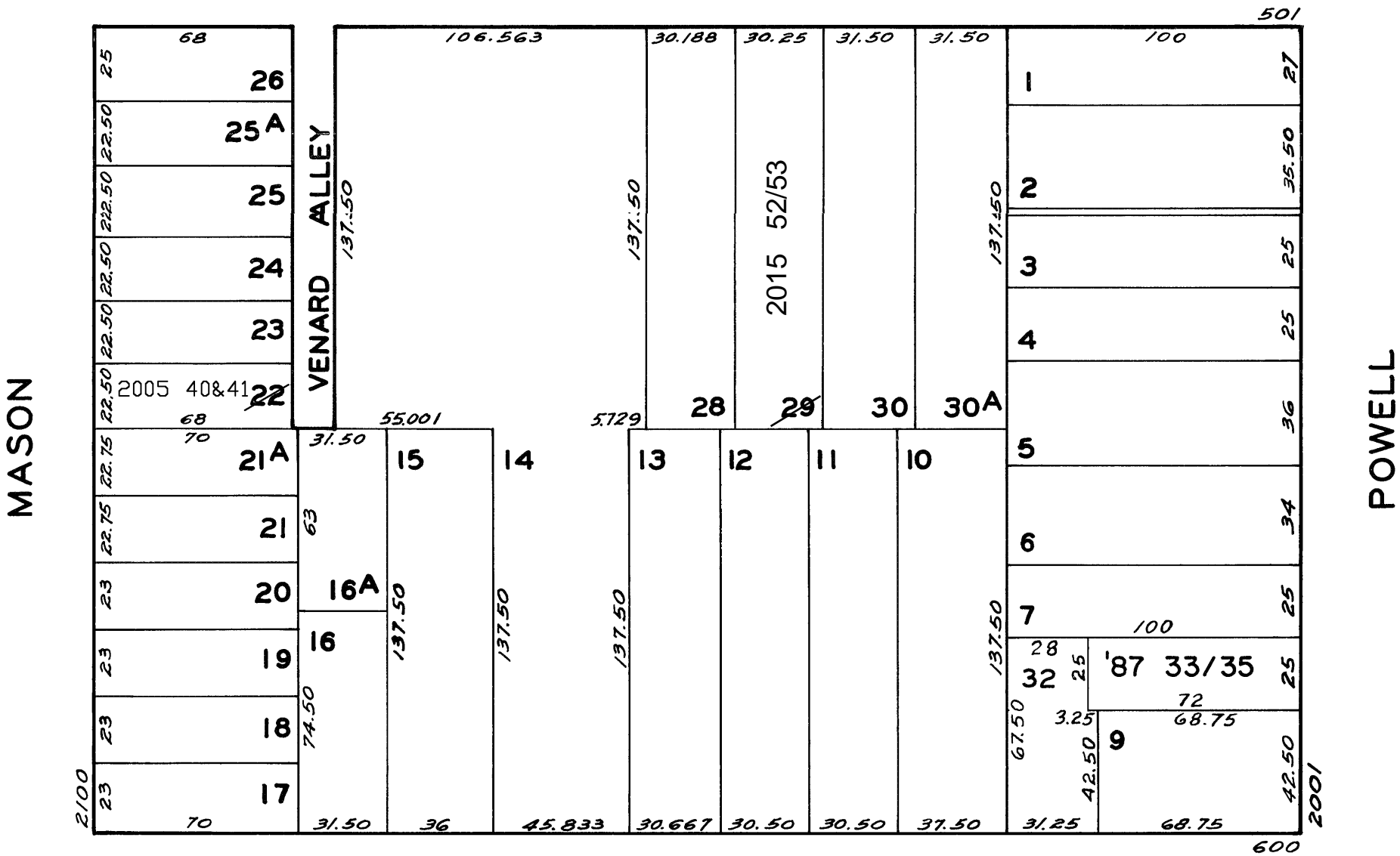
© COPYRIGHT SAN FRANCISCO  
CITY & COUNTY ASSESSOR 1995

Lot 29 into lots 52 & 53 for 2015 roll

REVISED '58  
" '87  
Revised 2005



CHESTNUT



LOMBARD

2138-2140 MASON ST.		
A CONDOMINIUM		
LOT	UNIT	% COMM. AREA
40	2138	75
41	2140	25

2011-2013-2015 POWELL ST.		
A CONDOMINIUM		
LOT	UNIT	% COMM. AREA
33	2011	29.41
34	2013	33.95
35	2015	36.64

ASSESSED 111,444 SQ. FT.  
BLK. TOTAL 111,444 SQ. FT.