

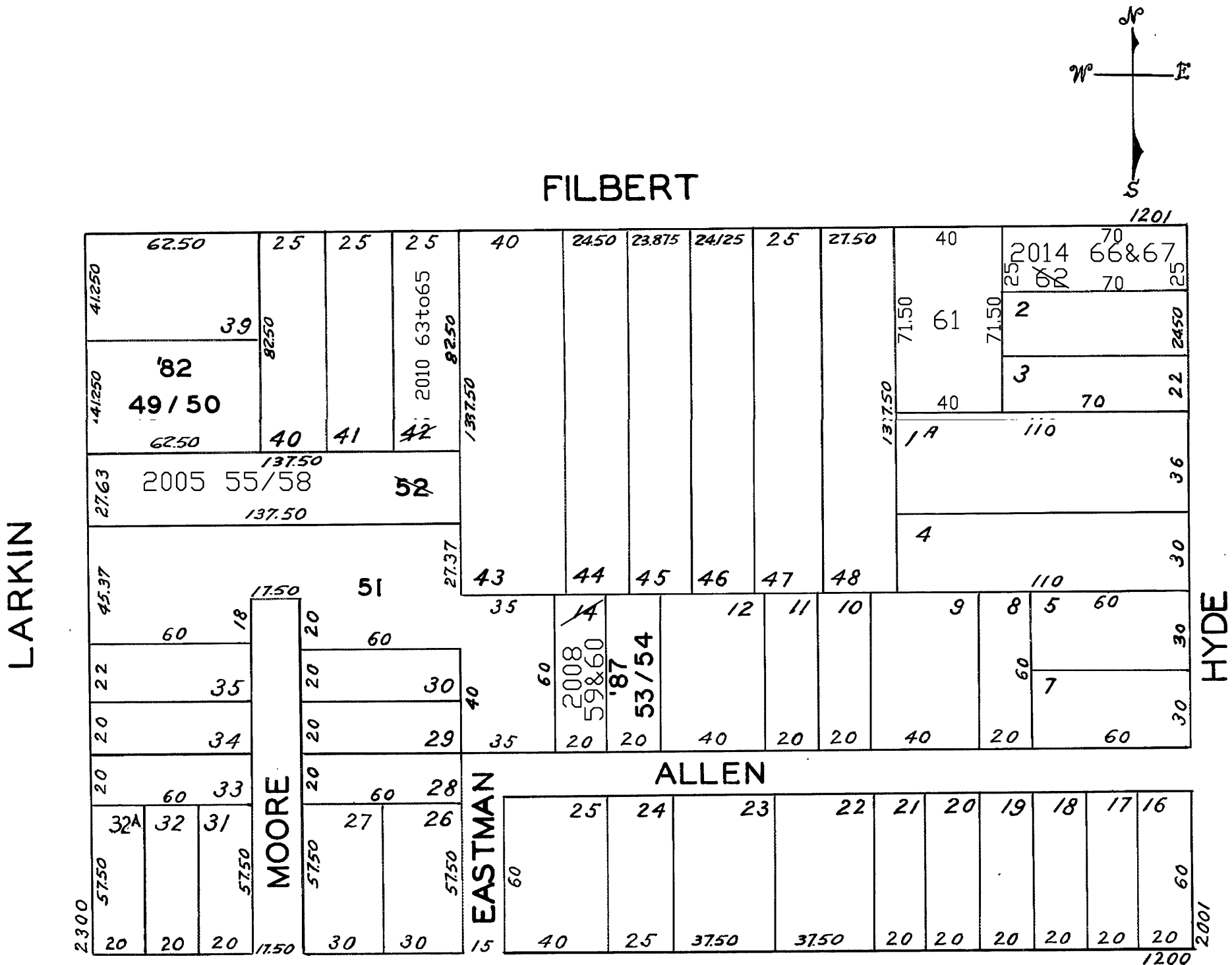
REVISED '81  
" '82  
" '87

Revised 2005  
Revised 2007  
Revised 2008  
Revised 2010  
Revised 2014

© COPYRIGHT SAN FRANCISCO  
CITY & COUNTY ASSESSOR 1995

LOTS MERGED  
Lot 6 into Lot 5- 43  
15,37 36 "1927"

lot52 into lots55to58 for 2005 roll  
lot1 into lots61&62 for 2007 roll  
lot14 into lots59&60 for 2008 roll  
lot42 into lots63to65 for 2010 roll  
lot62 into lots66&67 for 2014 roll



2356 LARKIN STREET		
A CONDOMINIUM		
LOT NO.	UNIT NO.	%COMMON AREA
49	1	46.82
50	2	53.18

52 ALLEN ST.		
A CONDOMINIUM		
LOT	UNIT	%COMM. AREA
53	1	41
54	2	59

2340 LARKIN ST.		
A CONDOMINIUM		
LOT	UNIT	% COMM. AREA
55	1	25
56	2	25
57	3	25
58	4	25

ASSESSED 105,356 SQFT  
BLK. TOTAL 105,356 SQFT