

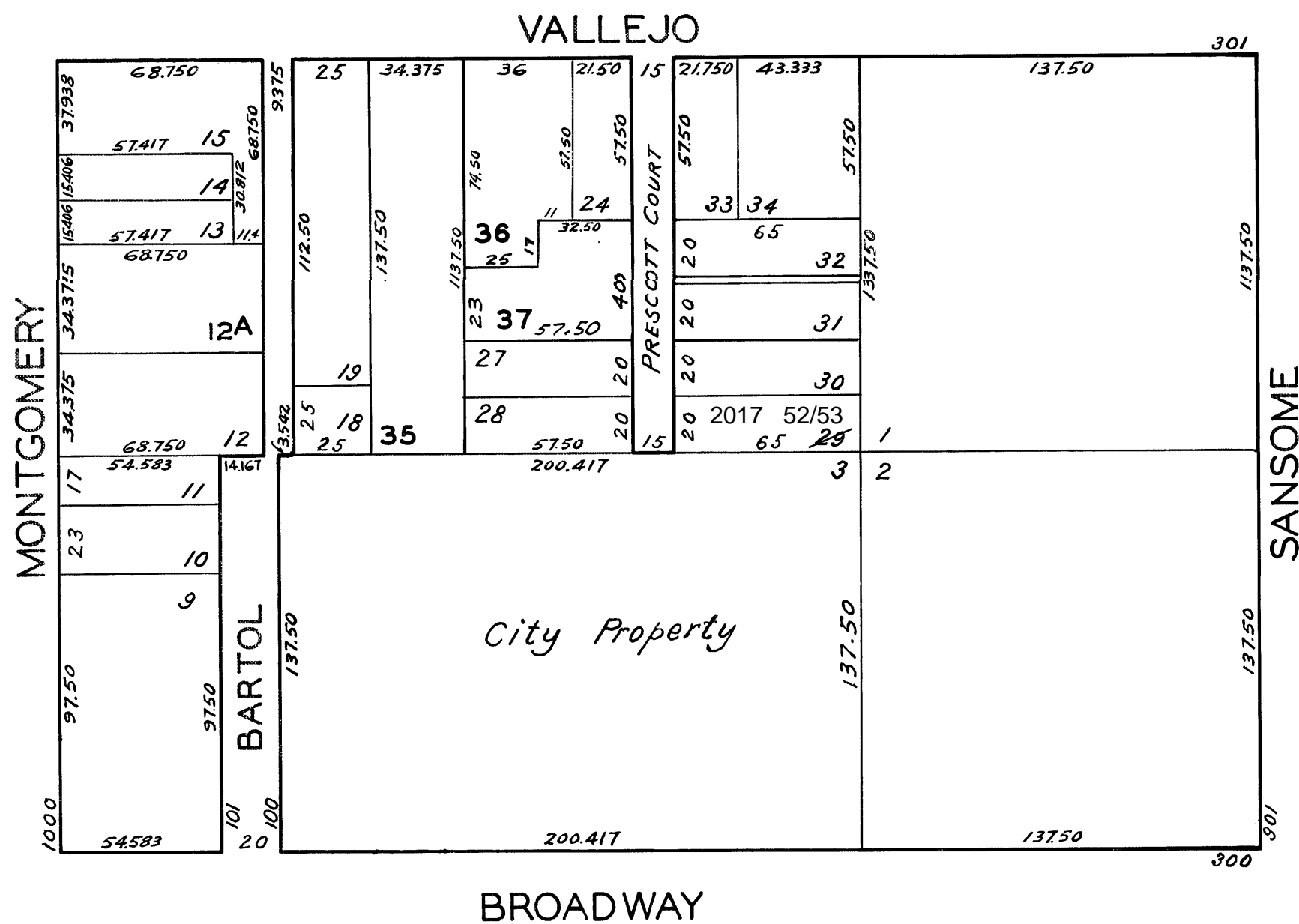
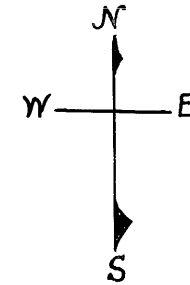
REVISED 1969
" 1979
REVISED 2017

**© COPYRIGHT SAN FRANCISCO
CITY & COUNTY ASSESSOR 1995**

LOTS MERGED

LOTS 4/8, 16, 17 INTO LOT - 3-1933
 " 21 " " -19-1943
 " 25A " " -22- "
 " 20 " " 19- "

Lot 29 into lots 52 & 53 for 2017 roll



ASSESSED 79,779
 CITY 27,557
 BLK. TOTAL 107,336 SQ. FT.