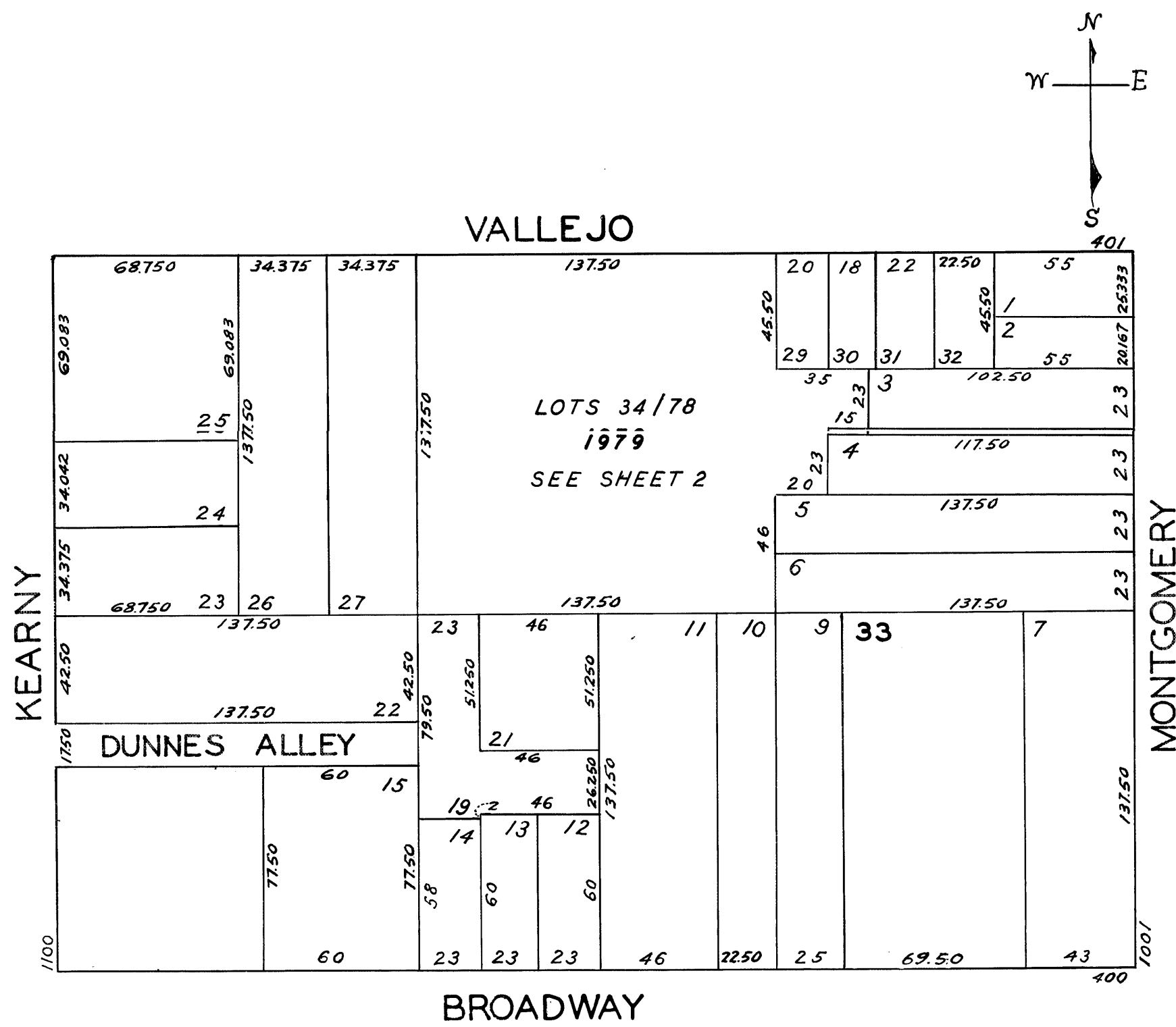


REVISED '76
" '79

© COPYRIGHT SAN FRANCISCO
CITY & COUNTY ASSESSOR 1995

LOTS MERGED
LOTS 20 INTO LOT-19-1943



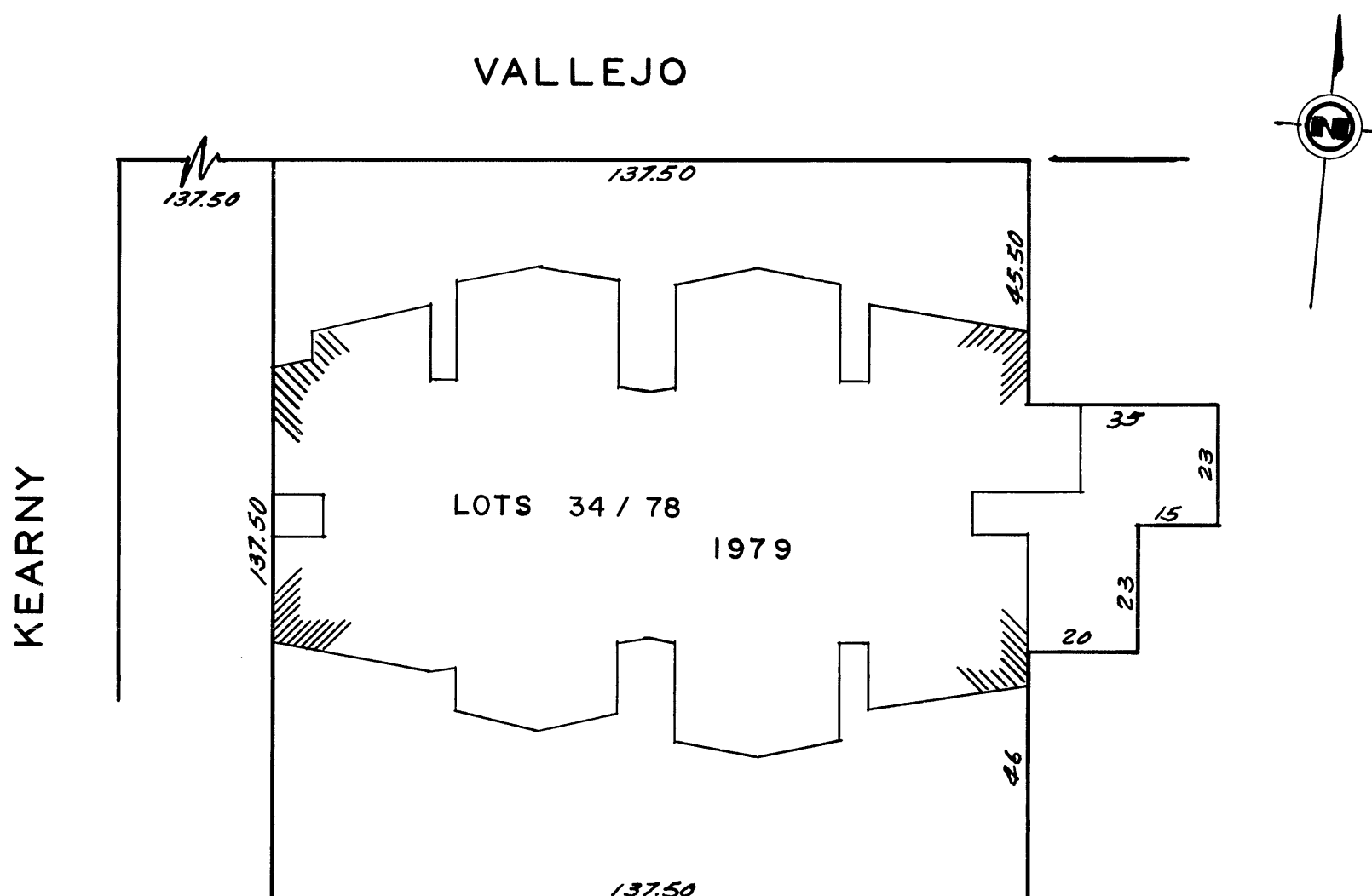
ASSESSED 111,032
BLK. TOTAL 111,032 SQ. FT.

455 VALLEJO STREET

© COPYRIGHT SAN FRANCISCO
CITY & COUNTY ASSESSOR 1995

A CONDOMINIUM

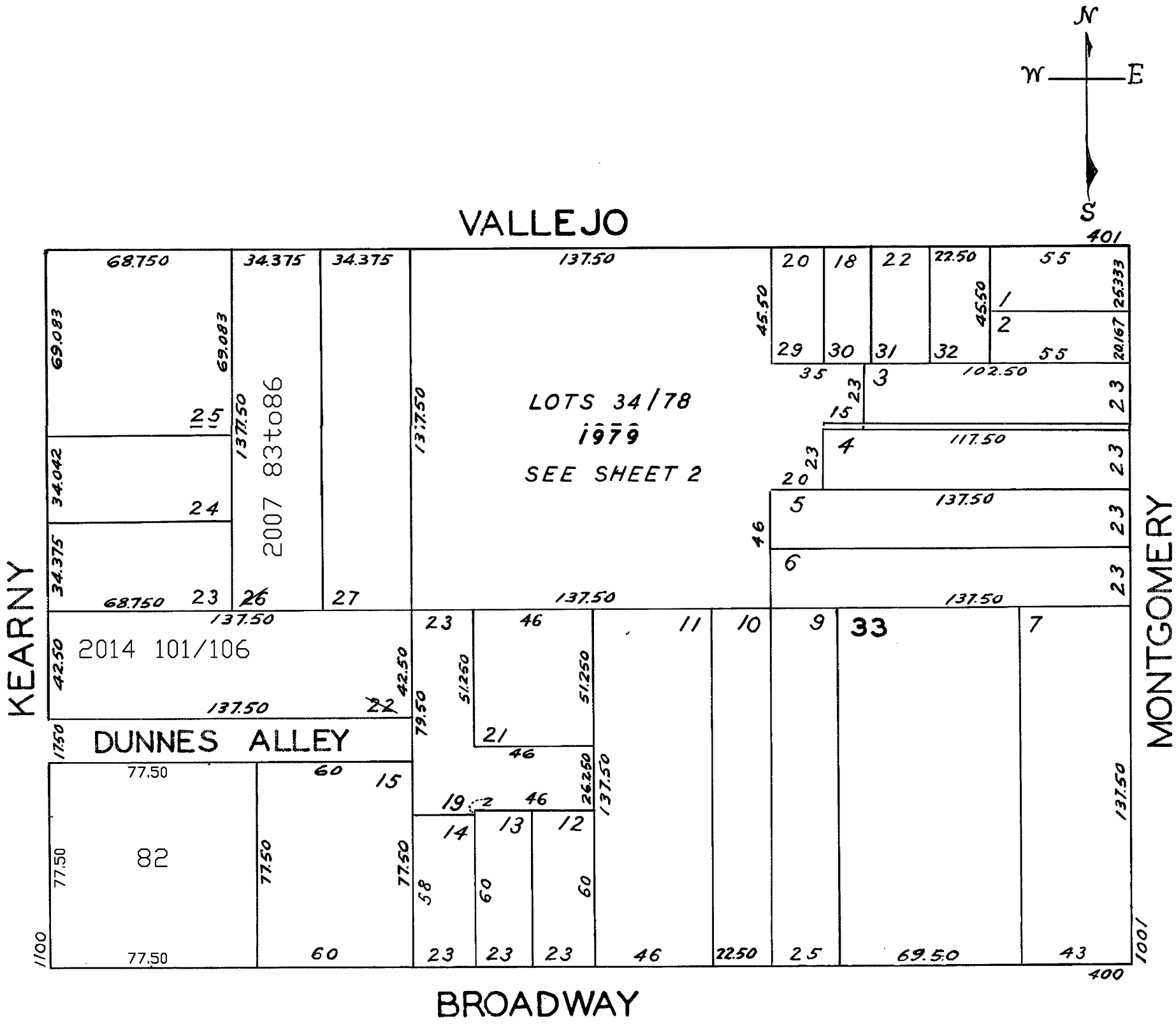
LOT NO.	UNIT NO.	% COMMON AREA	LOT NO.	UNIT NO.	% COMMON AREA
34	201	2.546	57	409	2.196
35	202	1.993	58	410	2.035
36	203	2.188	59	411	1.993
37	301	1.871	60	412	1.871
38	302	1.993	61	502	1.993
39	303	2.188	62	503	2.188
40	304	1.667	63	504	2.859
41	305	2.002	64	505	2.002
42	306	1.684	65	506	2.033
43	307	1.684	66	507	2.033
44	308	1.960	67	508	2.002
45	309	1.722	68	509	2.196
46	310	2.066	69	510	2.035
47	311	1.967	70	511	1.993
48	312	1.871	71	512	1.871
49	401	2.647	72	1	8.416
50	402	1.993	73	2	2.002
51	403	2.188	74	3	2.033
52	404	2.859	75	4	2.033
53	405	2.002	76	5	2.002
54	406	2.033	77	6	2.196
55	407	2.033	78	7	2.859
56	408	2.002			



REVISED '76
" '79
Revised 2002
Revised 2007
Revised 2014

© COPYRIGHT SAN FRANCISCO
CITY & COUNTY ASSESSOR 1995

LOTS MERGED
LOTS 20 INTO LOT-19-1943
lot16to18 into lots82 for 2002 roll
lot26 into lots83to86 for 2007 roll
lot22 into lots101to106 for 2014 roll



479-485 VALLEJO ST.
A CONDOMINIUM

LOT	UNIT	% COMM. AREA
83	479	42.7
84	483	17.9
85	485	20.1
86	487	19.3