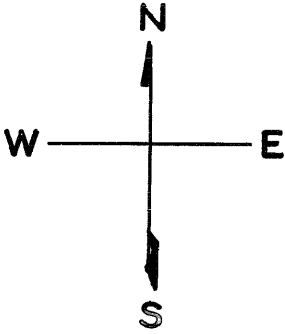


LOTS MERGED
lot 7 merged into lot 6 1943
lots3to5 into lot25 for 2002 roll
lot16 into lots18to24 for 1995 roll

REVISED 1968
" 1973
" '75
Revised 2002
Revised 1995



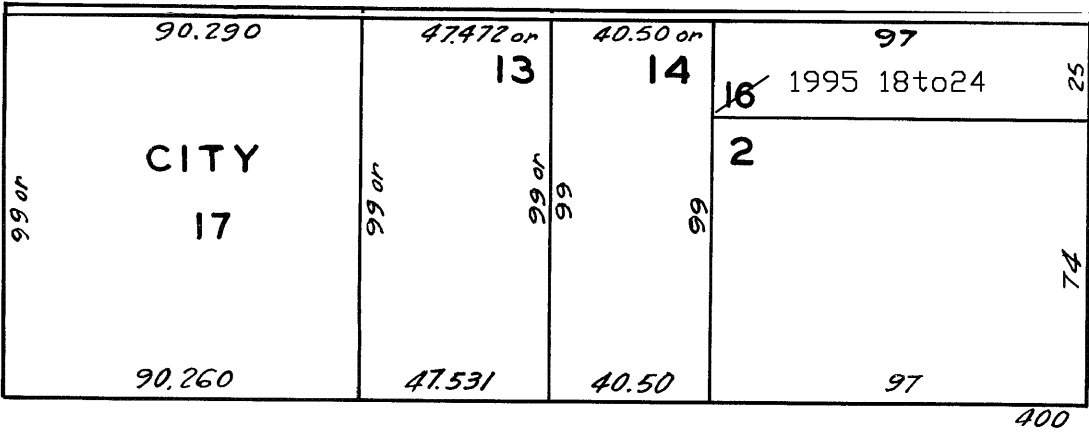
WASHINGTON

Former city line of WASHINGTON ST.

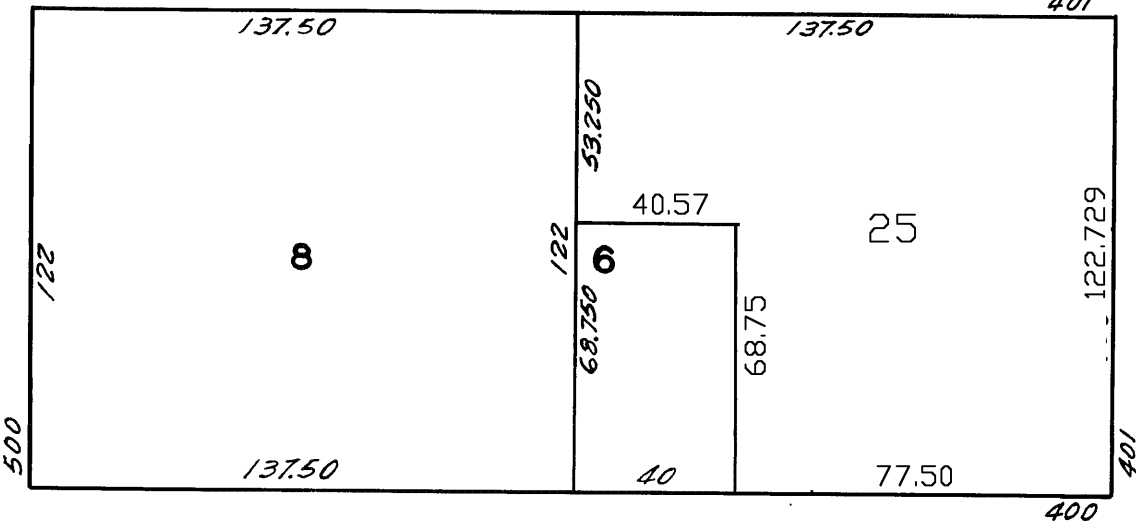
401WASHINGTON ST.
A CONDOMINIUM

LOT	UNIT	% COMM. AREA
18	101	11.26
19	201	14.79
20	301	14.79
21	401	14.79
22	501	14.79
23	601	14.79
24	701	14.79

SANSOME



MERCHANT



BATTERY

CLAY

ASSESSED 49,405
CITY 17,695
BLK. TOTAL 67,100 SQ. FT.