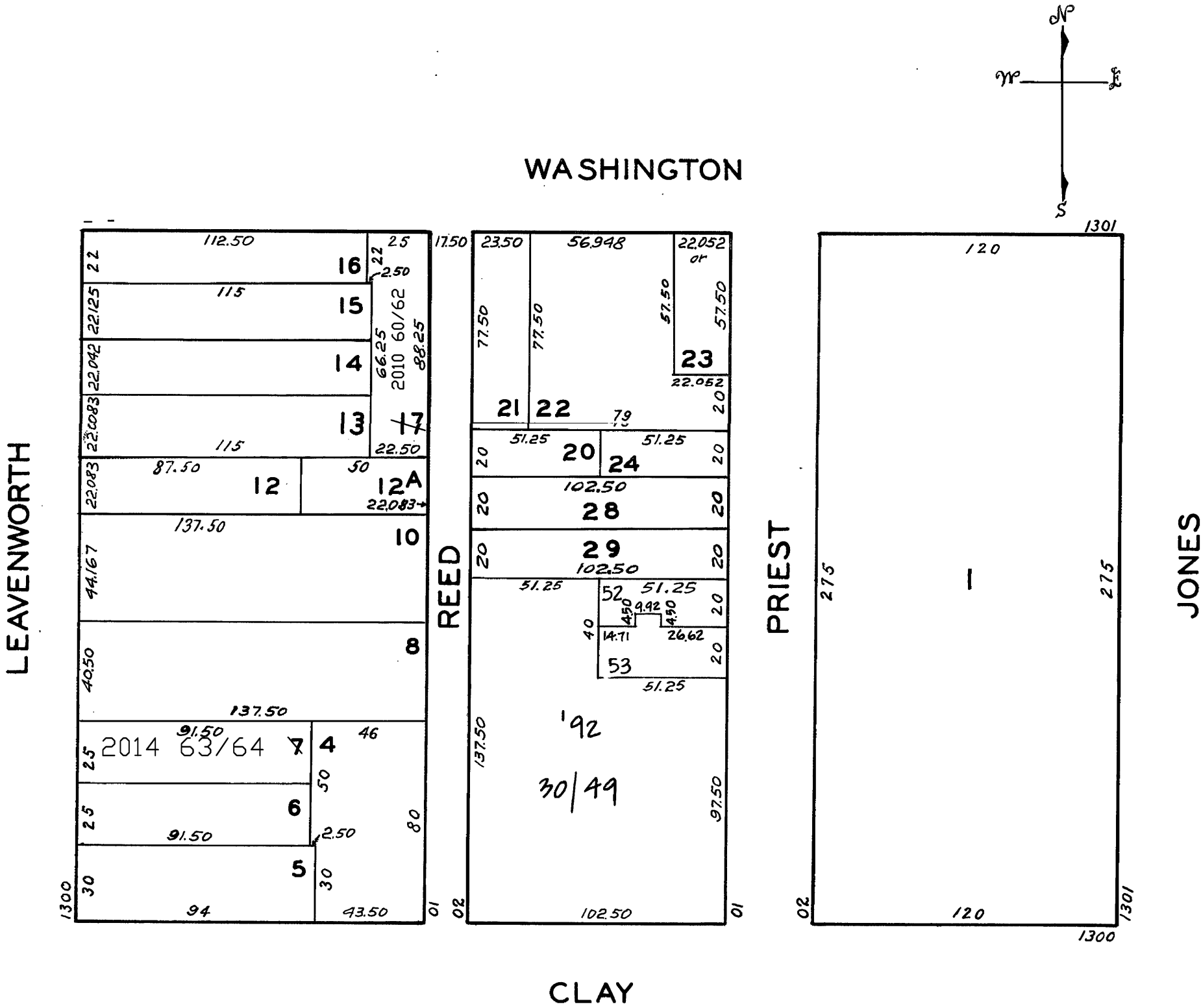


LOTS MERGED

Lot 2 merged into lot 1 - '33  
Lot 18 merged into lot 3 - '33  
Lot 11 merged into lot 10 - '43  
" 9 " " 8 - '54

lot17 into lots60/62 for 2010 roll  
lot7 into lots63&64 for 2014 roll

REVISED '83  
" '91  
" '92  
Revised 2010  
Revised 2014



1340 CLAY ST.		
A CONDOMINIUM		
LOT	UNIT	% COMM. AREA
30	301	2.78
31	302	2.46
32	303	2.64
33	401	6.17
34	402	4.10
35	403	4.01
36	404	4.57
37	501	5.17
38	502	4.11
39	503	4.06
40	504	4.59
41	601	5.17
42	602	6.62
43	603	4.59
44	701	5.17
45	702	5.37
46	801	5.17
47	802	5.34
48	803	8.29
49	901	9.62