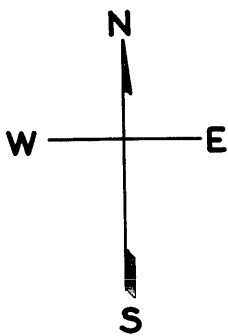


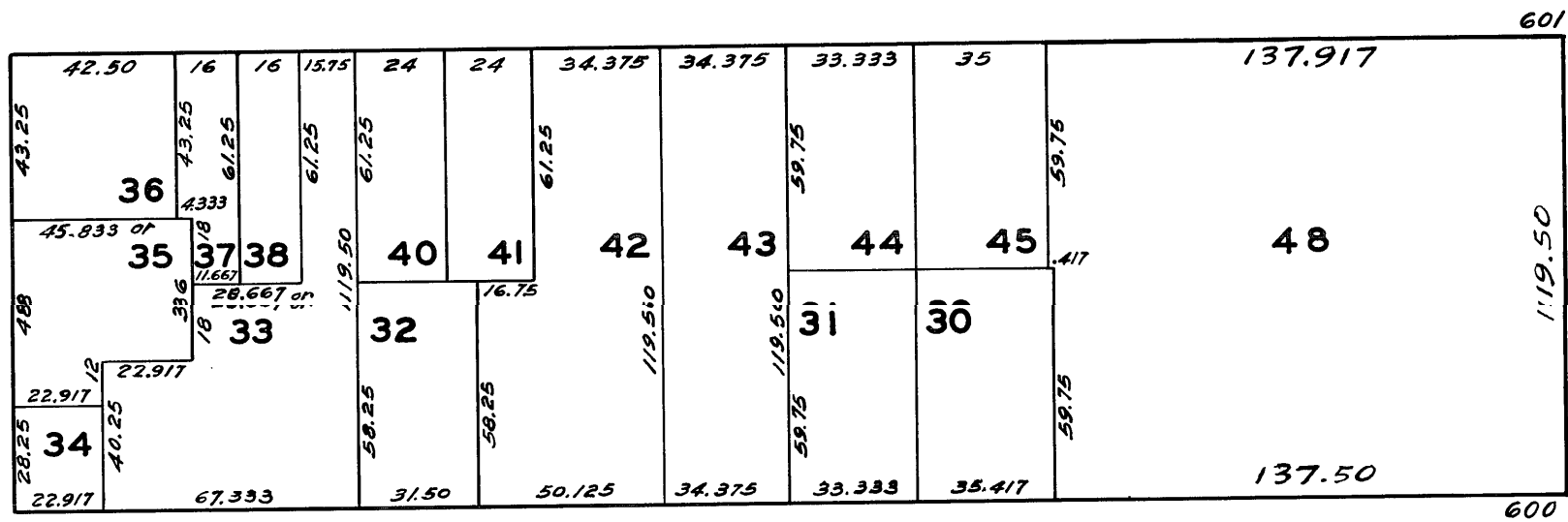
LOTS MERGED  
LOT 19 INTO LOT 18 - 1943  
" 39 " " 33 - "  
" 12 " " 11 - 1945

REVISED '83

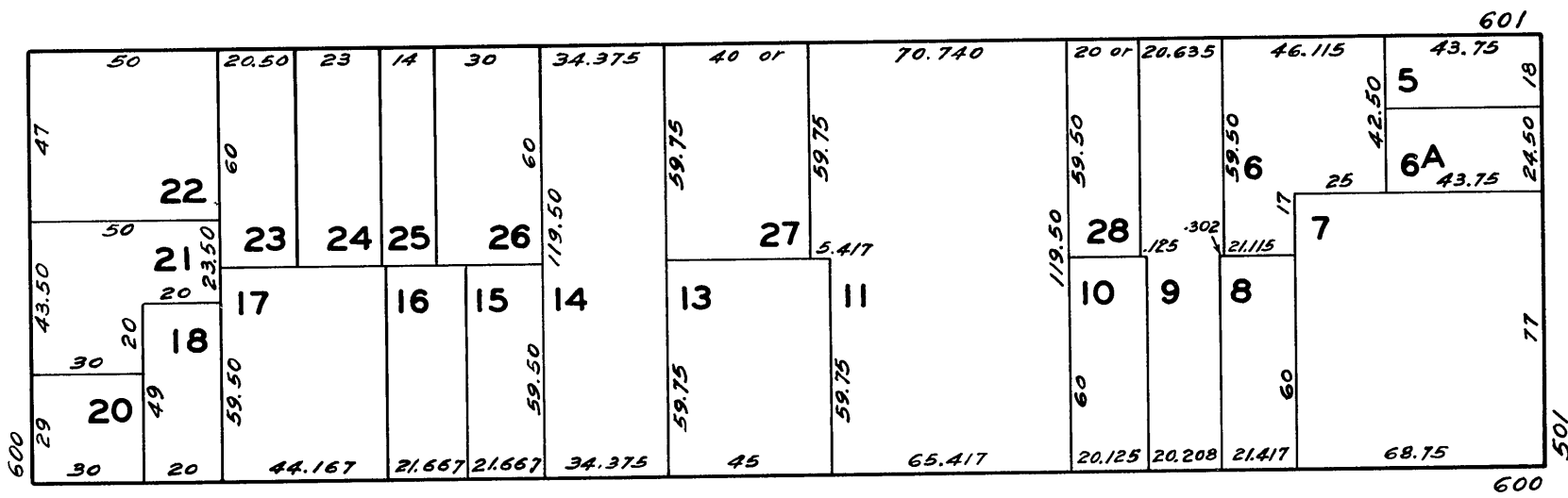
© COPYRIGHT SAN FRANCISCO  
CITY & COUNTY ASSESSOR 1995



CLAY



COMMERCIAL



SACRAMENTO