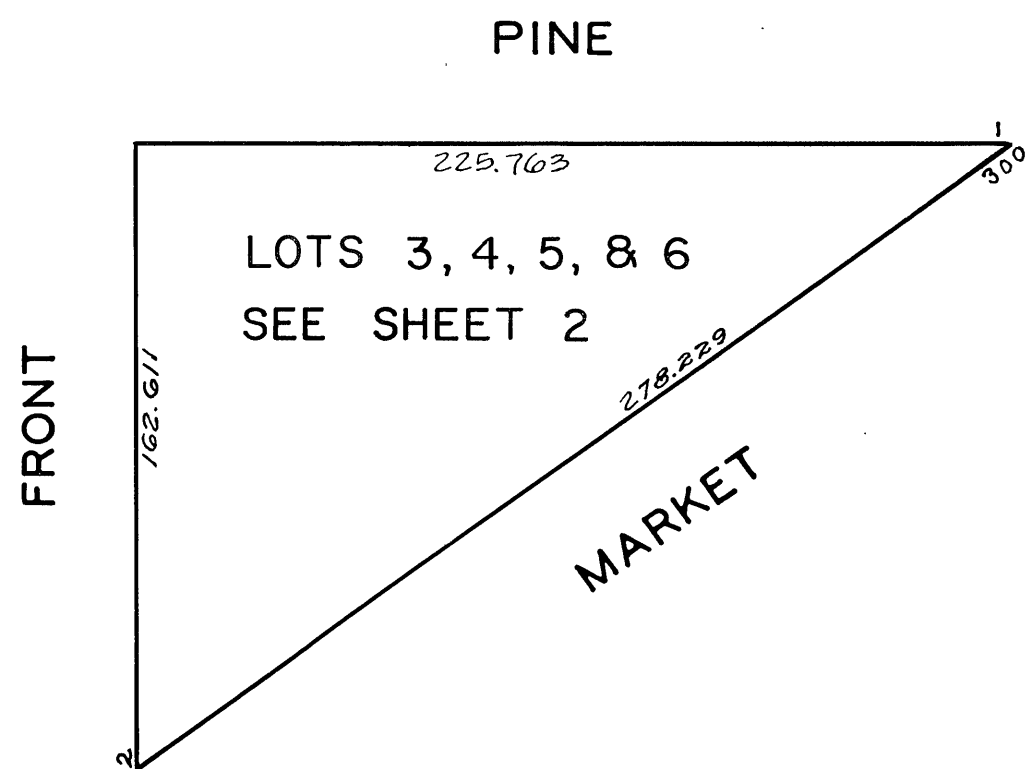
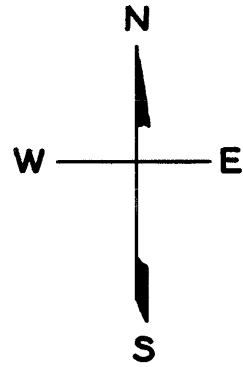
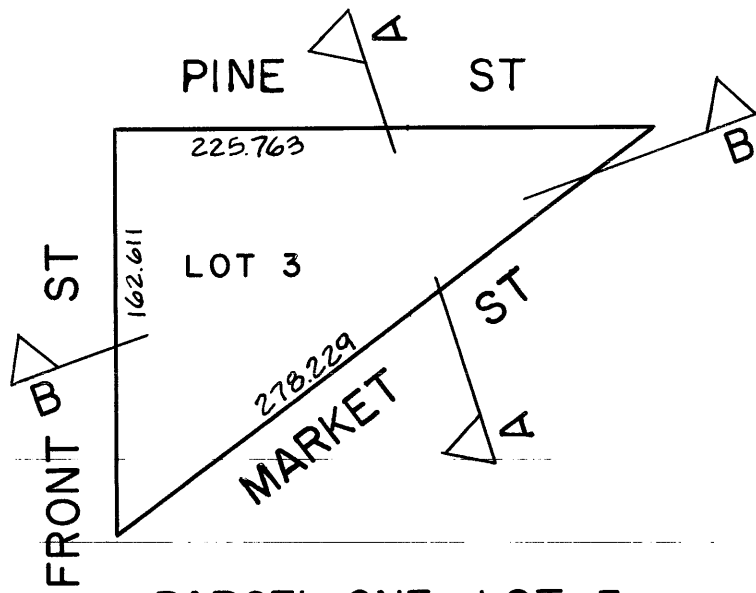


© COPYRIGHT SAN FRANCISCO  
CITY & COUNTY ASSESSOR 1995



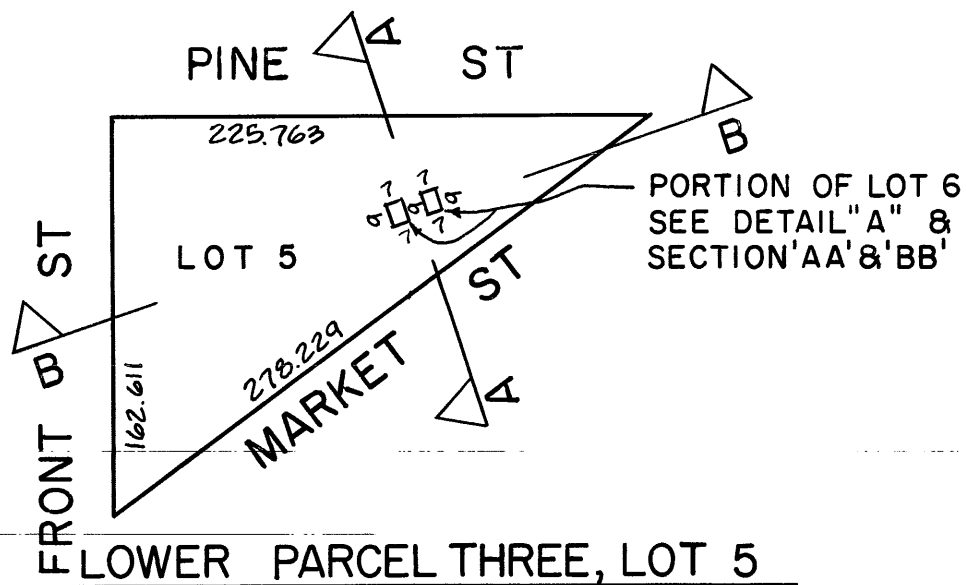
NOTE: LOT 6 INTO LOTS 7/69 (1988 ROLL) SEE SHT. 3

ASSESSED 18,356  
BLK. TOTAL 18,356 SQ. FT.



PARCEL ONE, LOT 3

LOWER ELEV. = -23.9  
UPPER ELEV. = 0.0

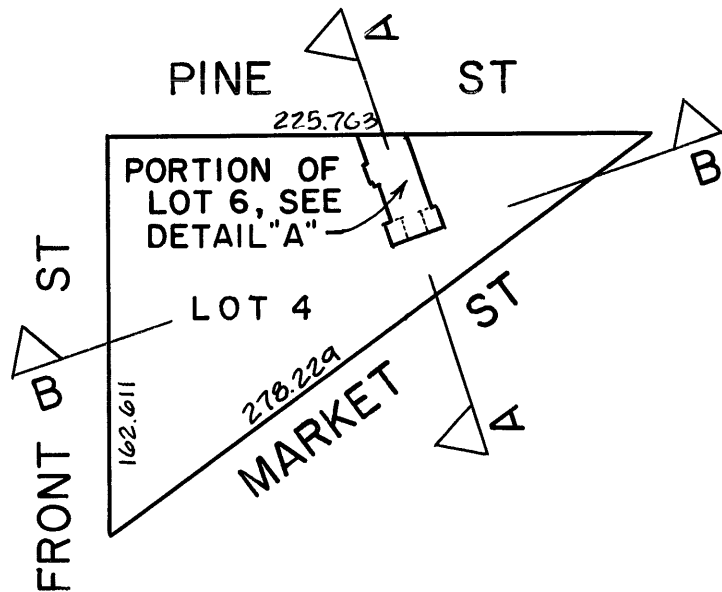
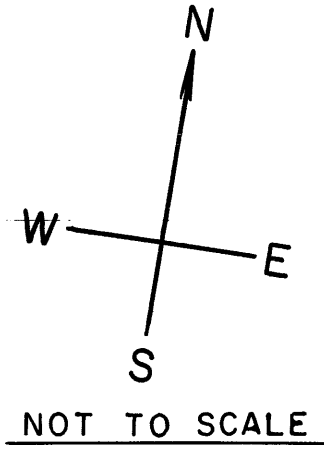


LOWER PARCEL THREE, LOT 5

LOWER ELEV. = 40.2  
UPPER ELEV. = 260.6

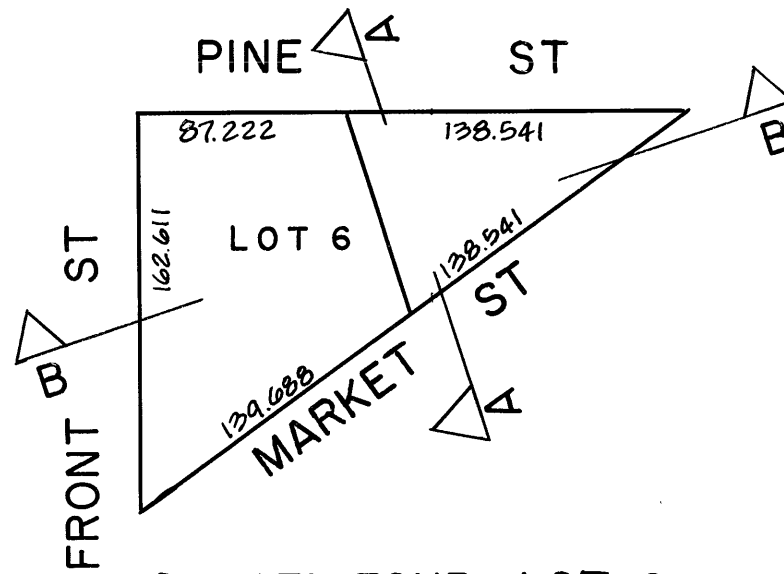
UPPER PARCEL THREE, LOT 5

LOWER ELEV. SEE PARCEL FOUR  
UPPER ELEV. = AIRSPACE ABOVE PARCEL FOUR



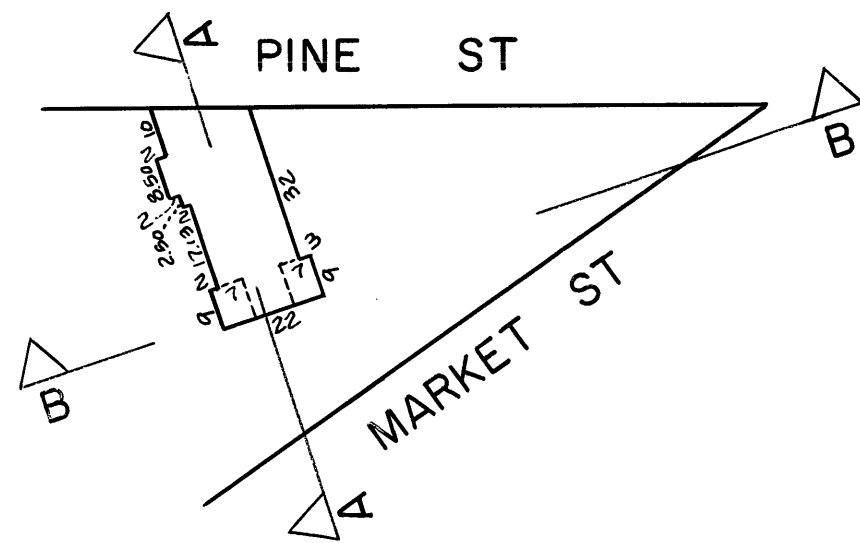
PARCEL TWO, LOT 4

LOWER ELEV. = 0.0  
UPPER ELEV. = 40.2



PARCEL FOUR, LOT 6

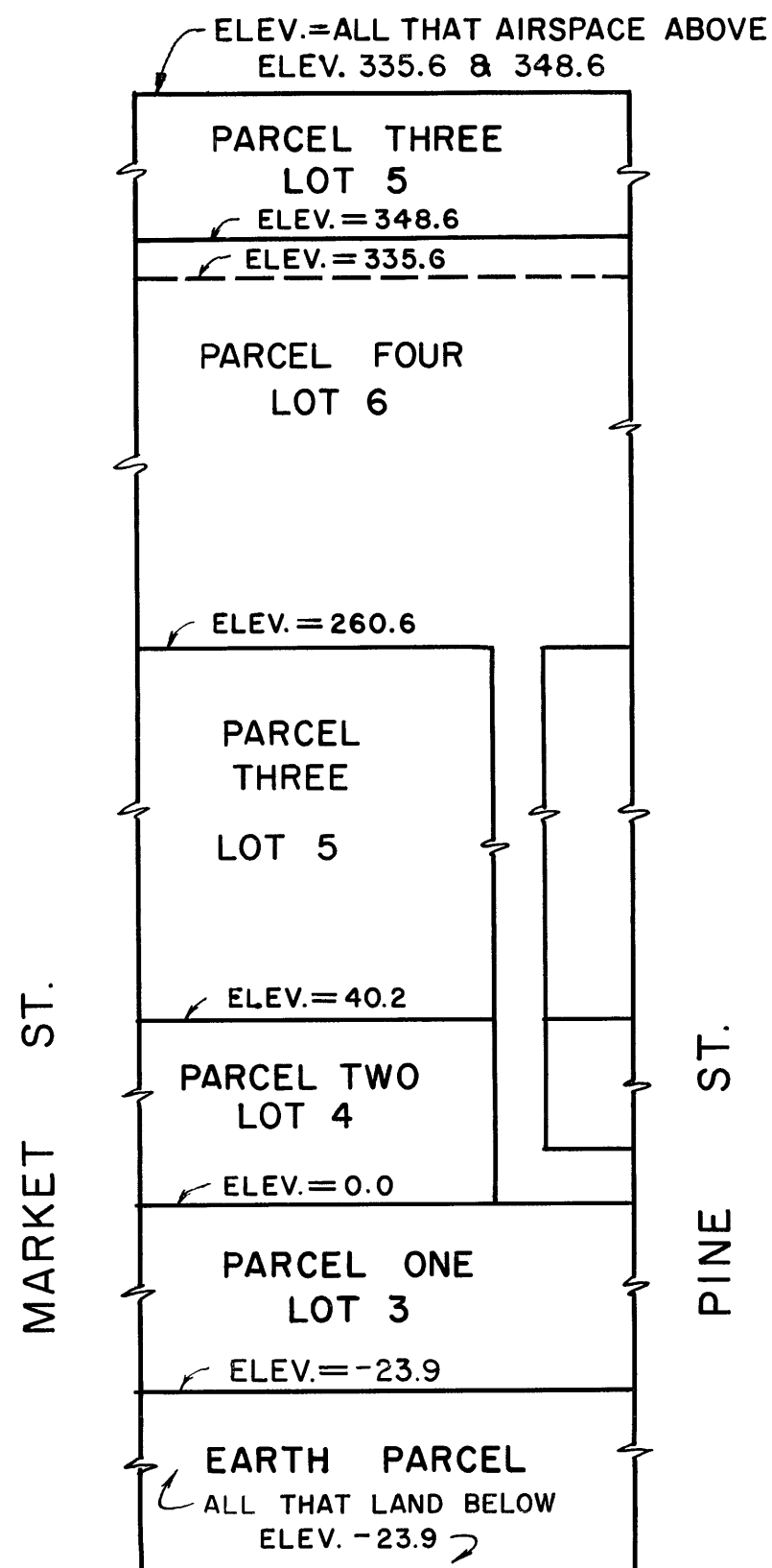
LOWER ELEV. = 260.6  
UPPER ELEV. = SEE  
SECTION "B-B"



DETAIL "A"

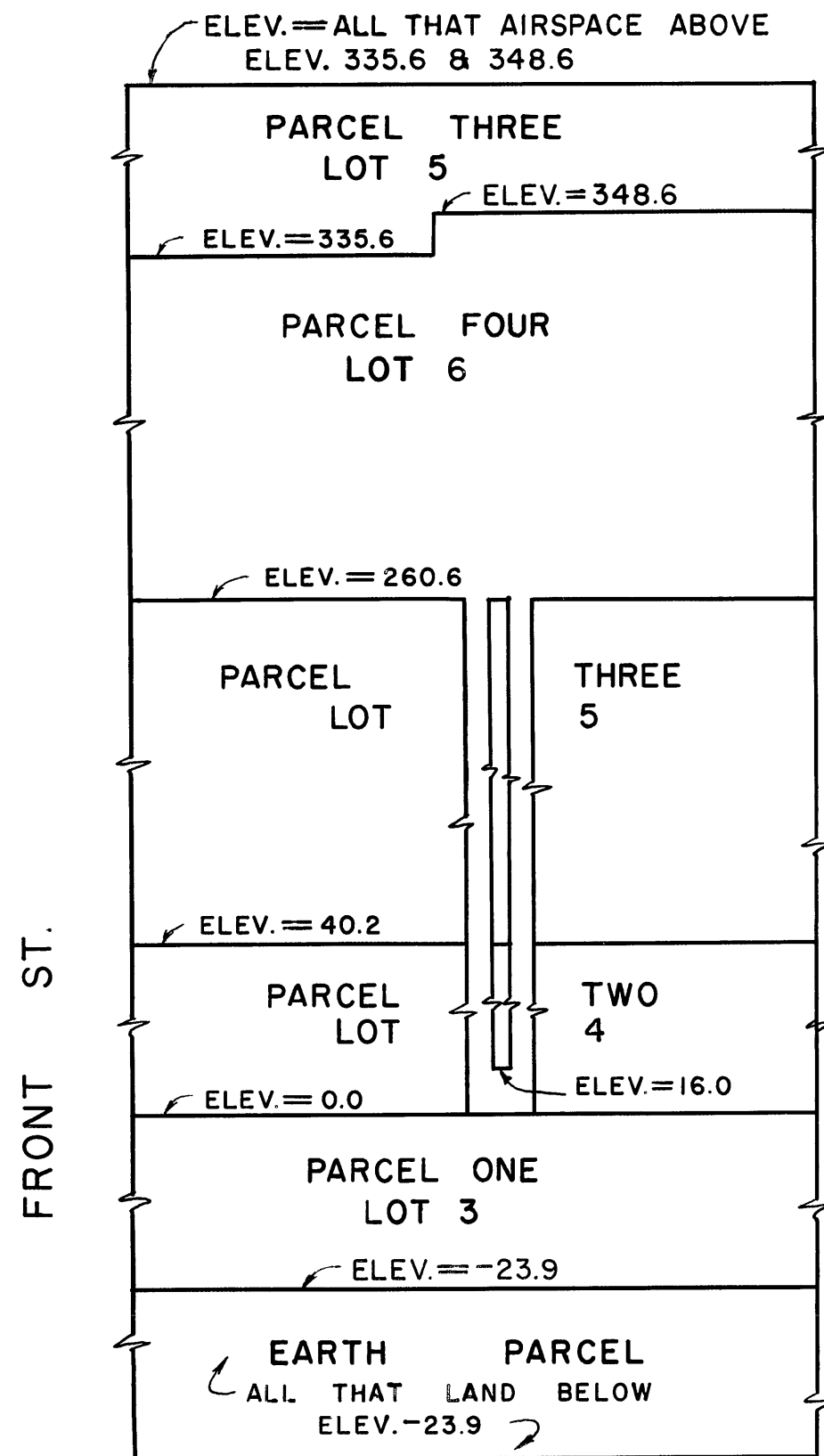
PORTION OF PARCEL FOUR, LOT 6

LOWER ELEV. = 9.9  
UPPER ELEV. = 16.0



SECTION "A-A"

( NOT TO SCALE )



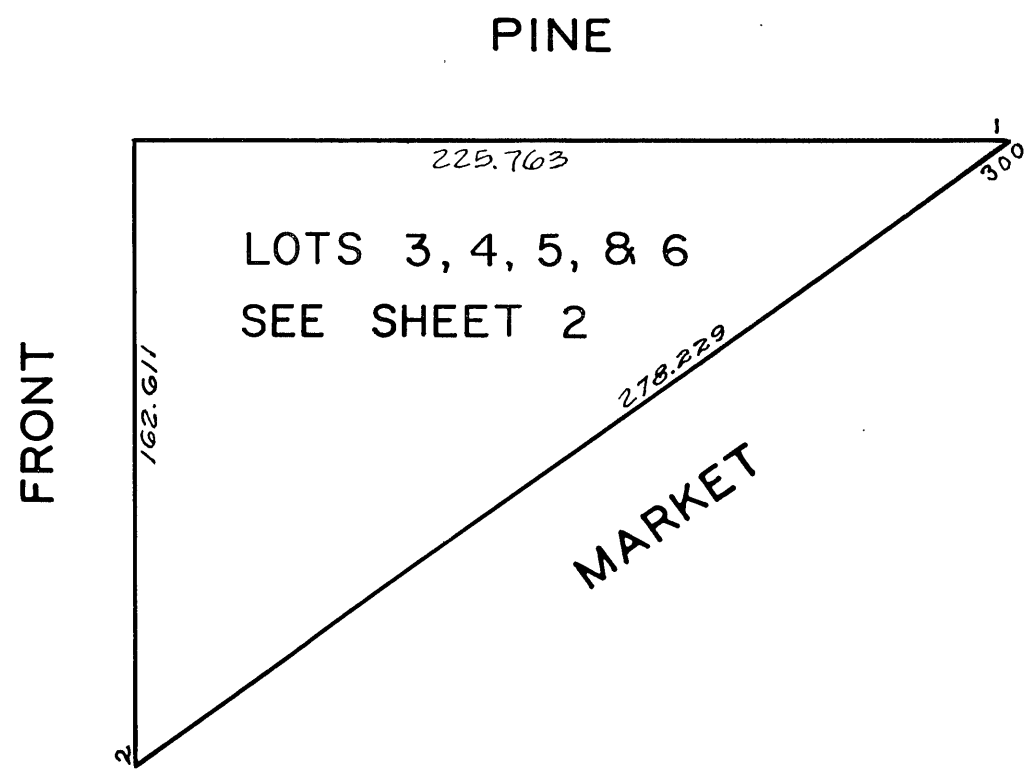
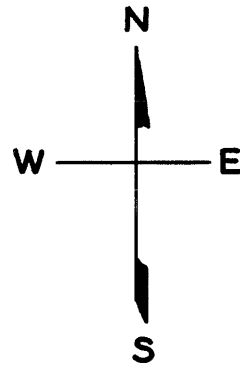
SECTION "B-B"

( NOT TO SCALE )

ONE — PINE — STREETA CONDOMINIUM

LOT	UNIT	% COMM. AREA	LOT	UNIT	% COMM. AREA
7	2002	1.78	39	2303	1.92
8	2001	2.26	40	2304	1.30
9	2003	1.92	41	2305	1.26
10	2004	1.30	42	2306	1.60
11	2005	1.26	43	2307	1.39
12	2006	1.60	44	2308	1.63
13	2007	1.38	45	2309	1.19
14	2008	1.62	46	2310	1.35
15	2009	1.18	47	2402	1.78
16	2010	1.34	48	2401	2.26
17	2102	1.78	49	2403	1.92
18	2101	2.26	50	2404	1.30
19	2103	1.92	51	2405	1.26
20	2104	1.30	52	2406	1.60
21	2105	1.26	53	2407	1.39
22	2106	1.60	54	2408	1.63
23	2107	1.39	55	2409	1.19
24	2108	1.63	56	2410	1.35
25	2109	1.19	57	2502	1.78
26	2110	1.35	58	2501	2.26
27	2202	1.78	59	2503	1.92
28	2201	2.26	60	2504	1.30
29	2203	1.92	61	2505	1.26
30	2204	1.30	62	2506	1.60
31	2205	1.26	63	2507	1.39
32	2206	1.60	64	2508	1.63
33	2207	1.39	65	2509	1.19
34	2208	1.63	66	2510	1.35
35	2209	1.19	67	2602	1.78
36	2210	1.35	68	2601	2.26
37	2302	1.78	69	2603	1.92
38	2301	2.26			

© COPYRIGHT SAN FRANCISCO  
CITY & COUNTY ASSESSOR 1995



NOTE: LOT 6 INTO LOTS 7/69 (1988 ROLL) SEE SHT. 3

ASSESSED 18,356  
BLK. TOTAL 18,356 SQ. FT.