

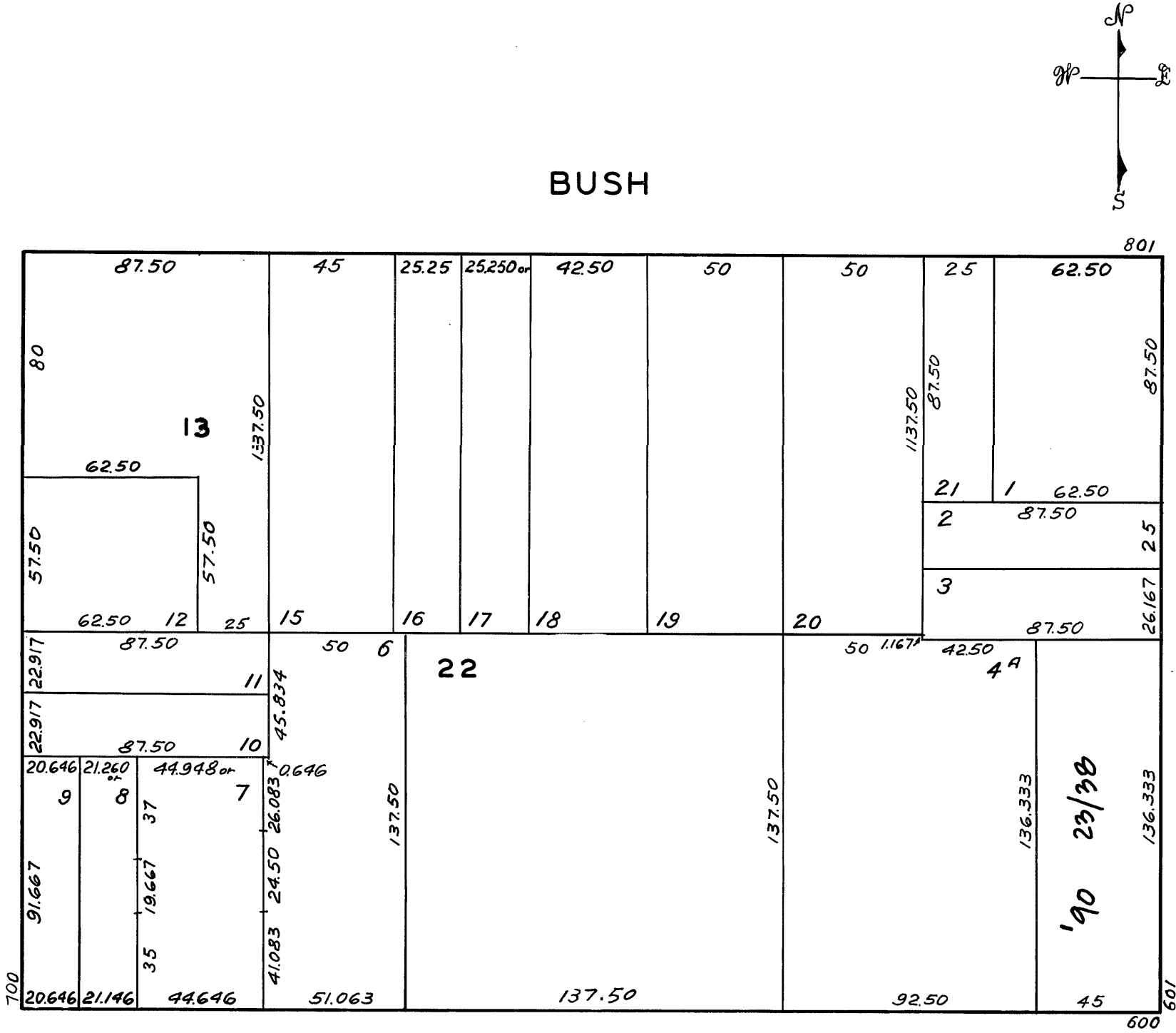
REVISED 1974  
" '90

Lot 14 merged into lot 13 '43

BUSH

TAYLOR

MASON



SUTTER

600 SUTTER ST.		
A CONDOMINIUM		
LOT	UNIT	% COMM. AREA
23	1	29.147
24	2	5.417
25	4A	4.177
26	4B	4.731
27	4C	4.558
28	4D	3.808
29	5A	4.442
30	5B	4.038
31	5C	3.635
32	5D	3.958
33	6B	4.188
34	6C	3.785
35	7B	4.731
36	7C	4.558
37	7E	7.269
38	7F	7.558