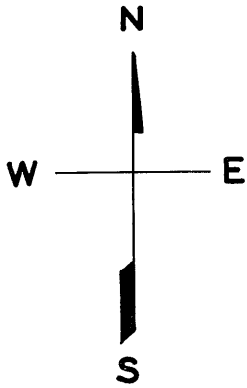


© COPYRIGHT SAN FRANCISCO
CITY & COUNTY ASSESSOR 1995

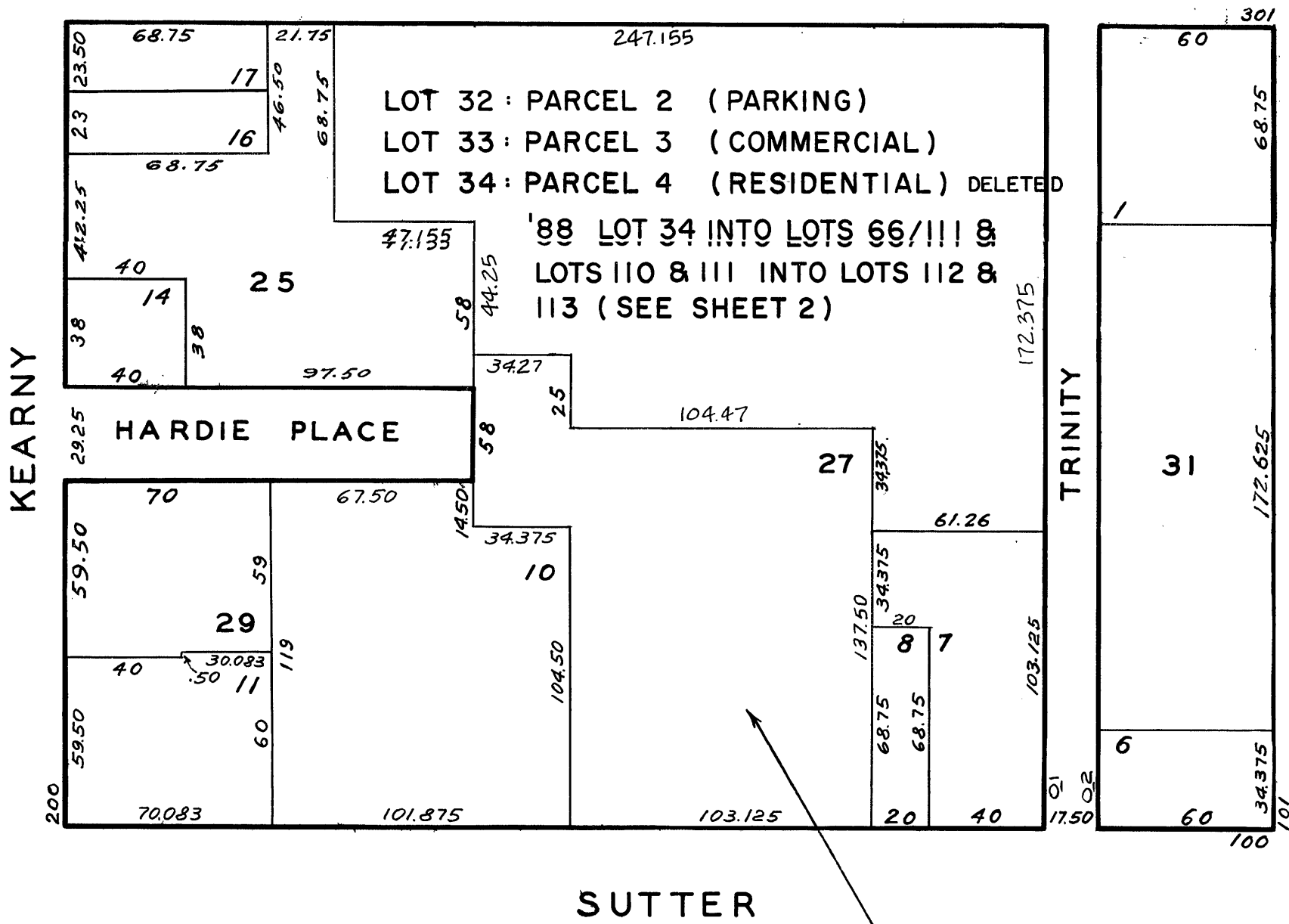
50 VARA BLK. 74

REVISED '57
REVISED '58
REVISED '61
REVISED '68
" '73
" '83
" '84
" '87
" '88

LOTS MERGED		
LOTS	INTO LOT	
24	7	"1945"
2/5	31	'84



BUSH



ASSESSED 104,603
BLK. TOTAL 104,603 SQ. FT.

333 BUSH ST.

A CONDOMINIUM

(RESIDENTIAL)

LOT	UNIT	% COMM. AREA	LOT	UNIT	% COMM. AREA	
66	G-1	5.102	89	3907	2.363	
67	3701	1.885	90	3908	2.270	
68	3702	1.517	91	4001	1.743	
69	3703	1.514	92	4002	1.743	
70	3704	2.119	93	4003	2.635	
71	3705	2.632	94	4004	1.869	
72	3706	2.346	95	4005	1.782	
73	3707	2.363	96	4006	2.384	
74	3708	2.577	97	4101	1.743	
75	3801	1.885	98	4102	1.743	
76	3802	1.517	99	4103	2.635	
77	3803	1.514	100	4104	1.869	
78	3804	2.119	101	4105	1.782	
79	3805	2.632	102	4106	2.384	
80	3806	2.346	103	4201	1.743	
81	3807	2.363	104	4202	1.743	
82	3808	2.577	105	4203	2.635	
83	3901	1.885	106	4204	1.869	
84	3902	1.517	107	4205	1.782	
85	3903	1.514	108	4206	2.384	
86	3904	2.119	109	PH-A	2.742	
87	3905	2.283	110	PH-B	2.666	INTO LOT 112
88	3906	2.357	111	PH-C	2.808	INTO LOT 113
			112	PH-B	3.038	
			113	PH-C	2.436	