

# ASSESSOR-RECORDER'S OFFICE

319

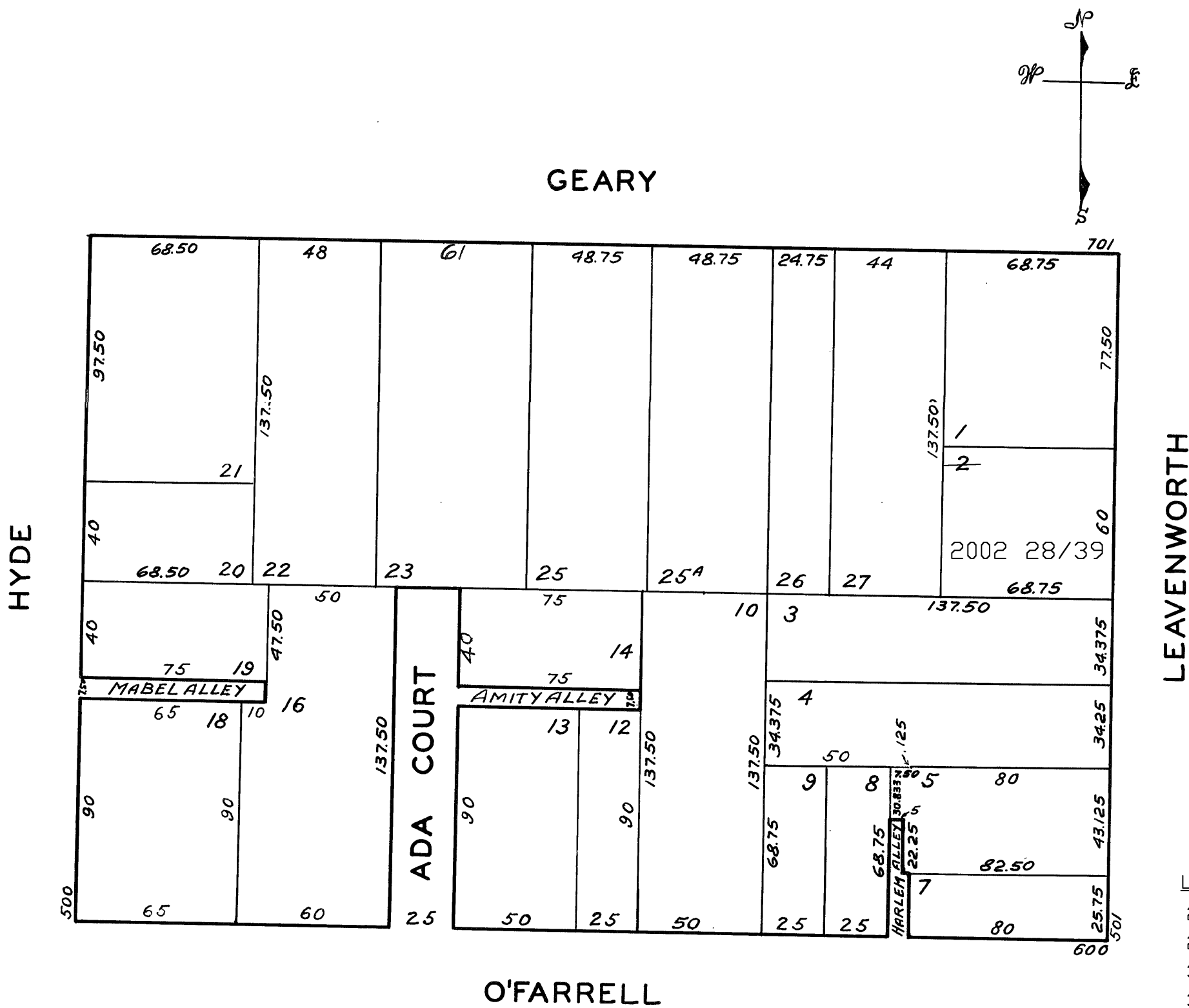
LOTS MERGED  
 LOT 17 INTO LOT 16 - 1924  
 " 4 & 6 " " 5 - 1941  
 " 11 " " 10 - 1943  
 " 15 " " 14 - "  
 " 24 " " 23 - "

lot2 into lots28/39 for 2002 roll

© COPYRIGHT SAN FRANCISCO  
 CITY & COUNTY ASSESSOR 1995

50 VARA BLK. 282

Revised 2002



545 LEAVENWORTH ST. A CONDOMINIUM			
LOT	UNIT	% COMM.	AREA
28	1	7.37	
29	2	7.88	
30	3	8.56	
31	4	8.43	
32	5	7.74	
33	6	8.36	
34	7	9.01	
35	8	8.77	
36	9	7.74	
37	10	8.36	
38	11	9.01	
39	12	8.77	

ASSESSED 108,571  
 BLK. TOTAL 108,571 SQ. FT.