

ASSESSOR-RECORDER'S OFFICE

© COPYRIGHT SAN FRANCISCO
CITY & COUNTY ASSESSOR 1995

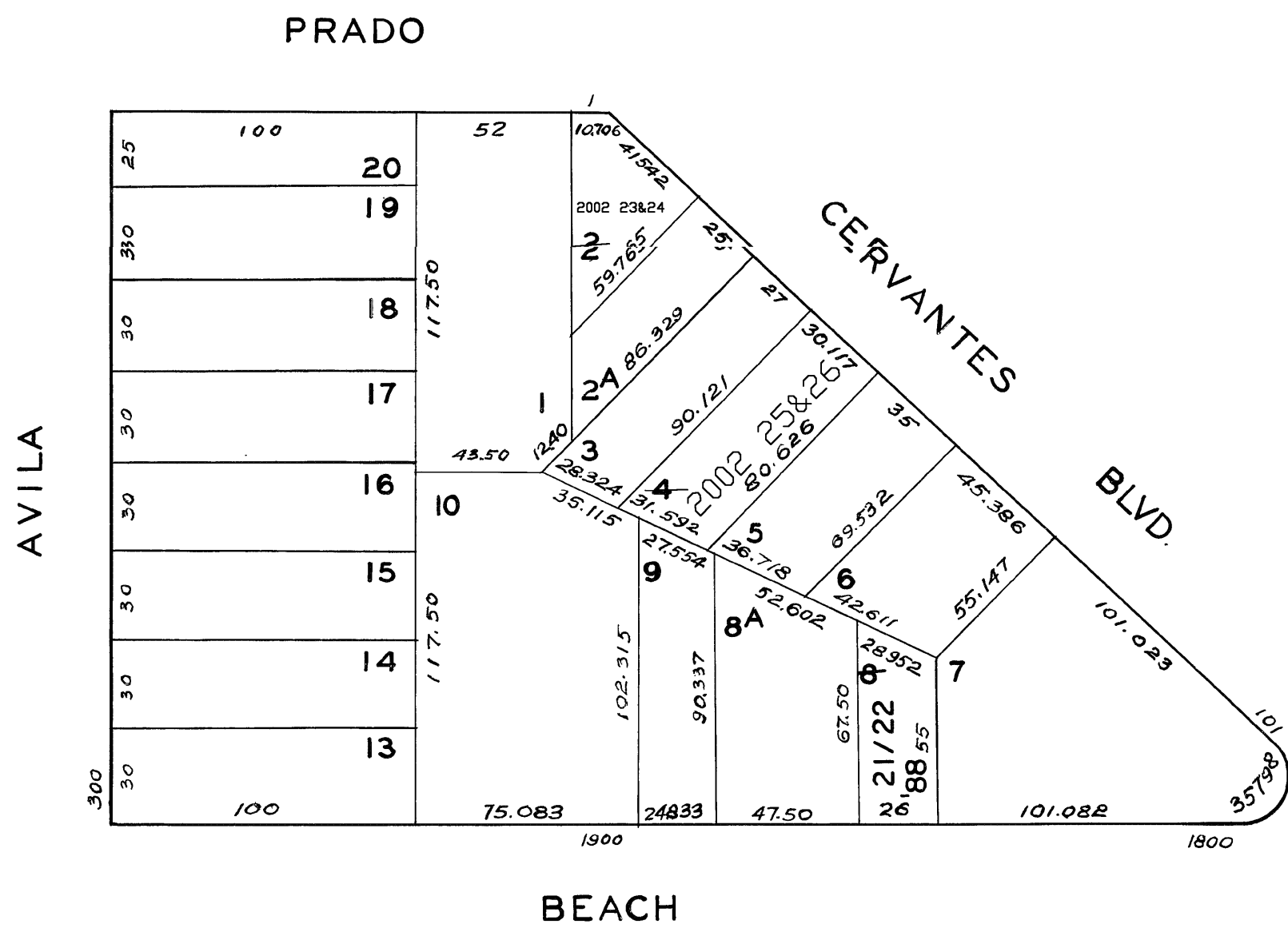
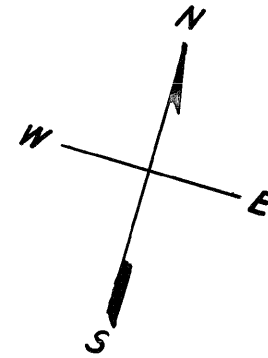
440^A

LOTS MERGED
LOTS 11, 12 INTO 10 - 1944

lot2 into lots23&24 for 2002 roll
lot4 into lots25&26 for 2002 roll

W A BLK. 410
MARINA GARDENS
REVISED 1988

Revised 2002



1824-1826 BEACH ST			
A CONDOMINIUM			
LOT	UNIT	%COMM.	AREA
21	1826	46.45	
22	1824	53.55	

165-167 CERVANTES BLVD.			
A CONDOMINIUM			
LOT	UNIT	% COMM.	AREA
23	165	53.30	
24	167	46.70	

147-149 CERVANTES BLVD.			
A CONDOMINIUM			
LOT	UNIT	% COMM.	AREA
25	147	50	
26	149	50	

Lot 11 merged into lot 10 - 1944
" 13 " " " 12 - "

440B

© COPYRIGHT SAN FRANCISCO
CITY & COUNTY ASSESSOR 1995

W A BLK. 410
MARINA GARDENS

