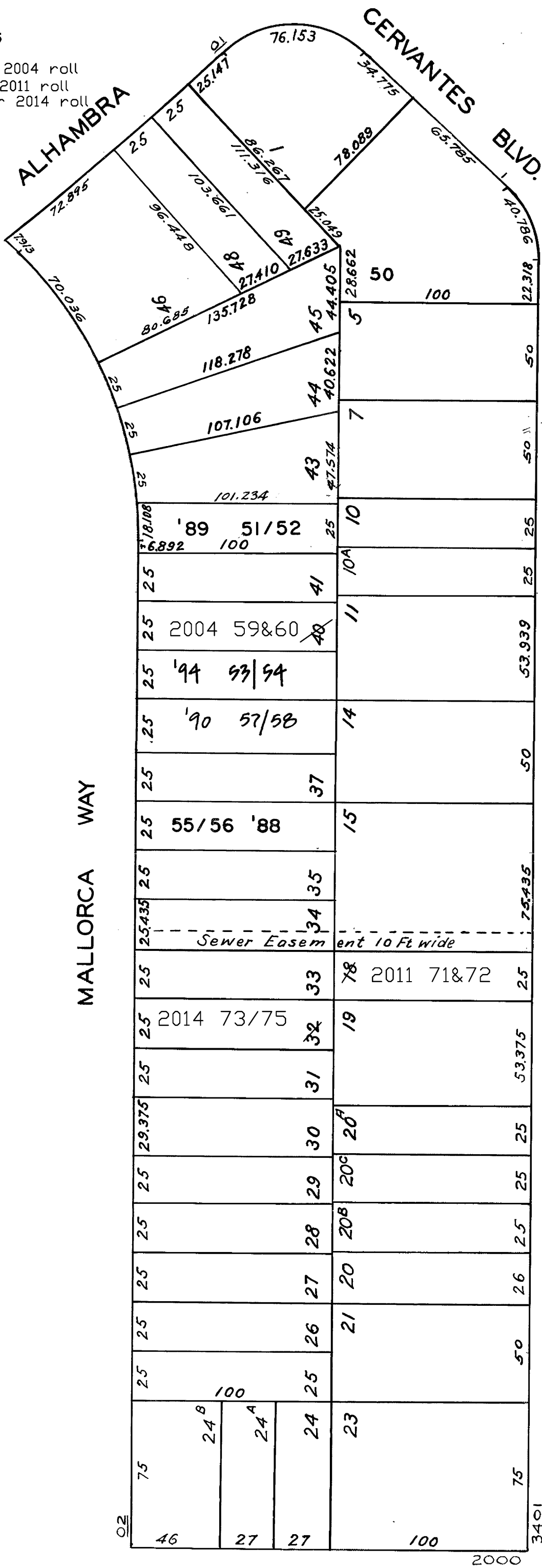


lot40 into lots59&60 for 2004 roll
lot18 into lots71&72 for 2011 roll
lot32 into lots73to75 for 2014 roll



467^A

W A BLK.339
MARINA GARDENS

REVISED '60
" '88
" '89
" '90
" '94

Revised 2004
Revised 2011
Revised 2014

LOTS MERGED

| LOTS | INTO LOT |
|---------------------|----------|
| " 13 - 14 - 1932 | |
| " 12 - 11 - 1933 | |
| " 9 - 10 - 1938 | |
| " 16,17 - 15 - 1944 | |
| " 22 - 21 - " | |
| " 47 - 46 - " | |
| " 2 - 1 - " | |
| " 6 - 5 - " | |
| " 8 - 7 - " | |

106-108 MALLORCA WAY

| A CONDOMINIUM | | |
|---------------|------|------------|
| LOT | UNIT | %COMM.AREA |
| 55 | 106 | 46.71 |
| 56 | 108 | 53.29 |

142-144 MALLORCA WAY

| A CONDOMINIUM | | |
|---------------|------|-------------|
| LOT | UNIT | %COMM. AREA |
| 51 | 142 | 41.99 |
| 52 | 144 | 58.01 |

118-120 MALLORCA WAY

| A CONDOMINIUM | | |
|---------------|------|--------------|
| LOT | UNIT | % COMM. AREA |
| 57 | 118 | 55.26 |
| 58 | 120 | 44.74 |

124-126 MALLORCA WAY

| A CONDOMINIUM | | |
|---------------|------|--------------|
| LOT | UNIT | % COMM. AREA |
| 53 | 126 | 47.40 |
| 54 | 124 | 52.60 |

130-132 MALLORCA WAY

| A CONDOMINIUM | | |
|---------------|------|--------------|
| LOT | UNIT | % COMM. AREA |
| 59 | 130 | 50 |
| 60 | 132 | 50 |