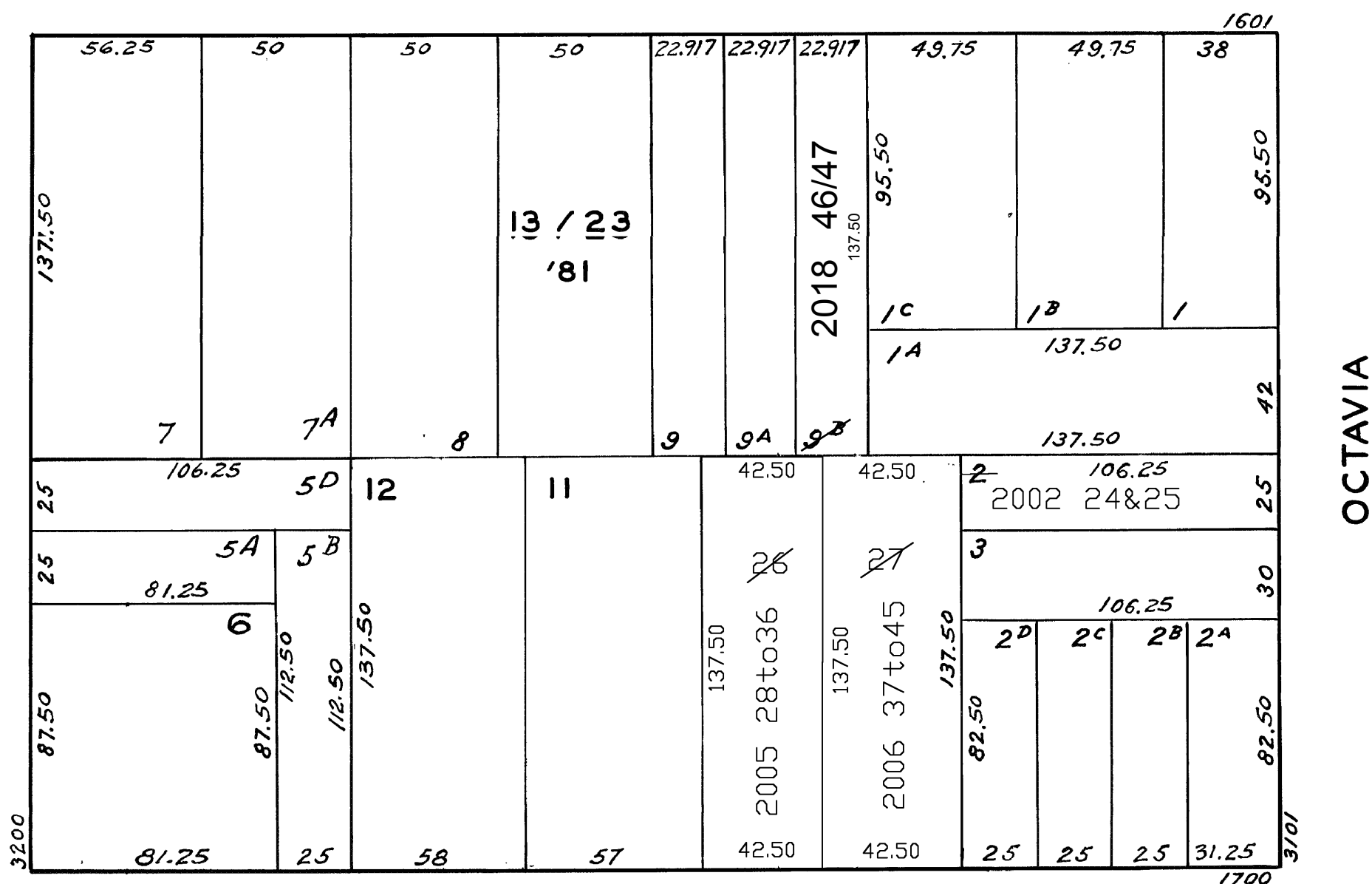


lot2 into lots24&25 for 2002 roll
lot4 into lots26&27 for 2004 roll
lot26 into lots28to36 for 2005 roll
lot27 into lots37to45 for 2006 roll
Lot 9B into lots 46 & 47 for 2018 roll

Revised 2002
Revised 2004
Revised 2005
Revised 2006
REVISED 2018



13	101	9.89
14	102	6.98
15	103	9.73
16	104	6.80
17	201	9.89
18	202	6.98
19	203	9.73
20	204	6.80
21	301	17.13
22	302	9.27
23	303	6.80

<u>LOT</u>	<u>UNIT</u>	<u>% COMM. AREA</u>
24	3139	53.00
25	3141	47.00

28	1	5.36
29	2	5.66
30	3	8.84
31	4	9.87
32	5	17.32
33	6	14.73
34	7	15.34
35	8	16.33
36	1738	6.55

<u>LOT</u>	<u>UNIT</u>	<u>% COMM. AREA</u>
------------	-------------	---------------------

LOT	UNIT	% COMM. AREA
28	1	5.36
29	2	5.66
30	3	8.84
31	4	9.87
32	5	17.32
33	6	14.73
34	7	15.34
35	8	16.33
36	1738	6.55