

ASSESSOR-RECORDER'S OFFICE

© COPYRIGHT SAN FRANCISCO
CITY & COUNTY ASSESSOR 1995

501

W A BLK. 27

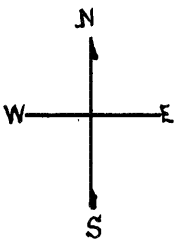
LOTS MERGED

LOTS INTO LOT
" 7 - 6 - '944'
" 19 18 '955'

REVISED '80
" '86
" '90

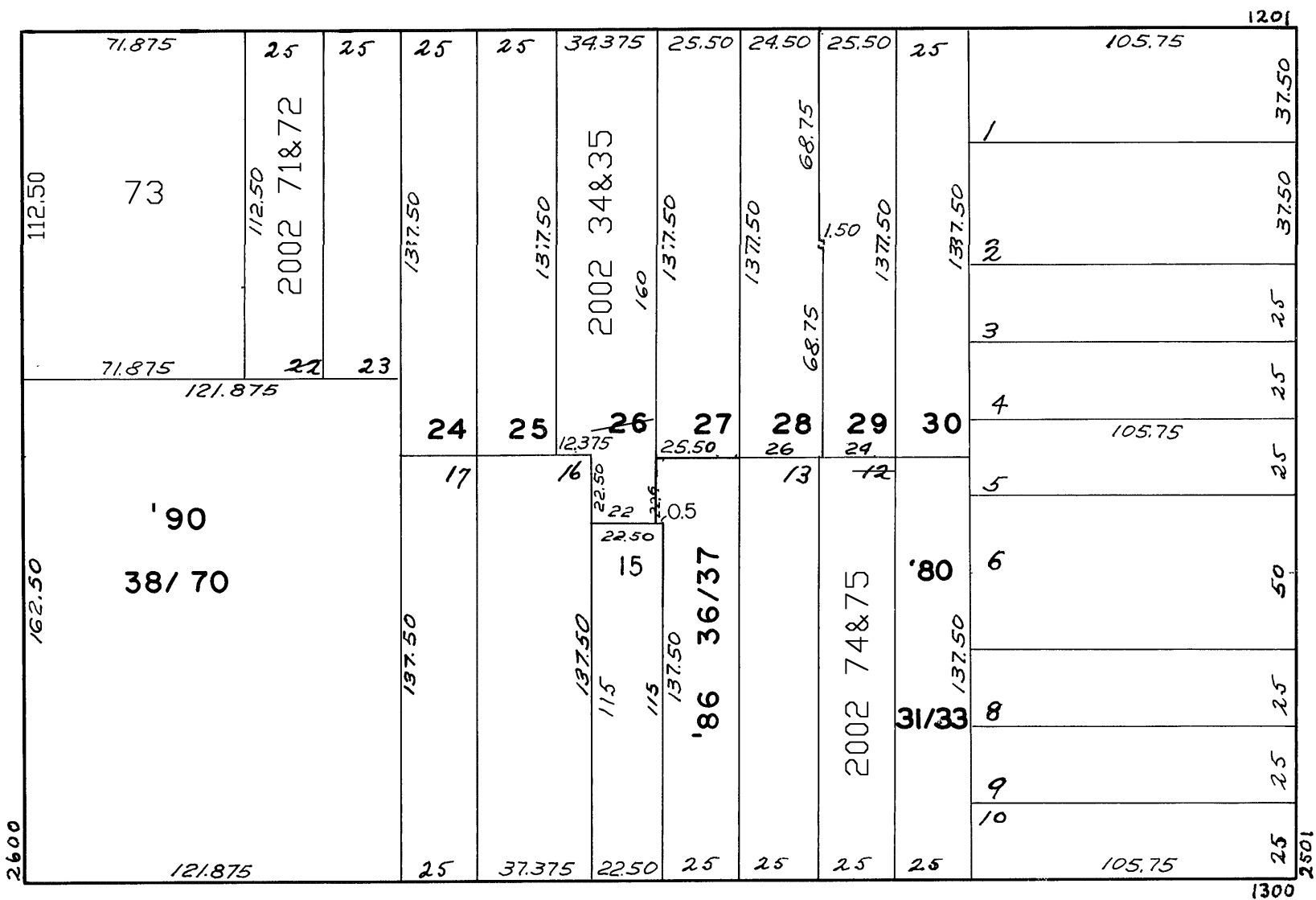
lot12 into lots74&75 for 2002 roll
lot26 into lots34&35 for 2002 roll
lot22 into lots71&72 for 2002 roll
lots20&21 into lot73 for 2002 roll

Revised 2002



LOMBARD

POLK



LARKIN

GREENWICH

1330 GREENWICH ST.
A CONDOMINIUM

LOT	UNIT	% COMM. AREA
74	1	35.00
75	2	65.00

1249-1251 LOMBARD ST.
A CONDOMINIUM

LOT	UNIT	% COMM. AREA
34	1249	43.08
35	1251	56.92

1271-1275 LOMBARD ST.
A CONDOMINIUM

LOT	UNIT	% COMM. AREA
71	1271	40.57
72	1275	59.43

1324-1326-1328 GREENWICH ST.
A CONDOMINIUM

LOT NO.	UNIT NO.	% COMMON AREA
31	1324	37.087
32	1326	27.818
33	1328	35.706

1342-1344 GREENWICH ST.
A CONDOMINIUM

LOT	UNIT	% COMM. AREA
36	1342	49.10
37	1344	50.90

1380 GREENWICH ST.
A CONDOMINIUM

LOT NO.	UNIT NO.	% COMMON AREA
38	2650	5.649
39	105	2.456
40	106	3.935
41	107	3.220
42	108	3.293
43	109	3.199
44	110	3.887
45	111	3.150
46	201	2.231
47	202	2.352
48	203	2.341
49	204	2.242
50	205	2.456
51	206	3.935
52	207	3.220
53	208	8.293
54	209	3.199
55	210	3.887
56	211	3.390
57	301	2.339
58	302	2.467
59	303	2.341
60	304	2.242
61	305	2.456
62	306	3.935
63	307	3.220
64	308	3.274
65	309	3.199
66	311	3.515
67	401	2.246
68	402	2.467
69	403	2.401
70	404	2.563