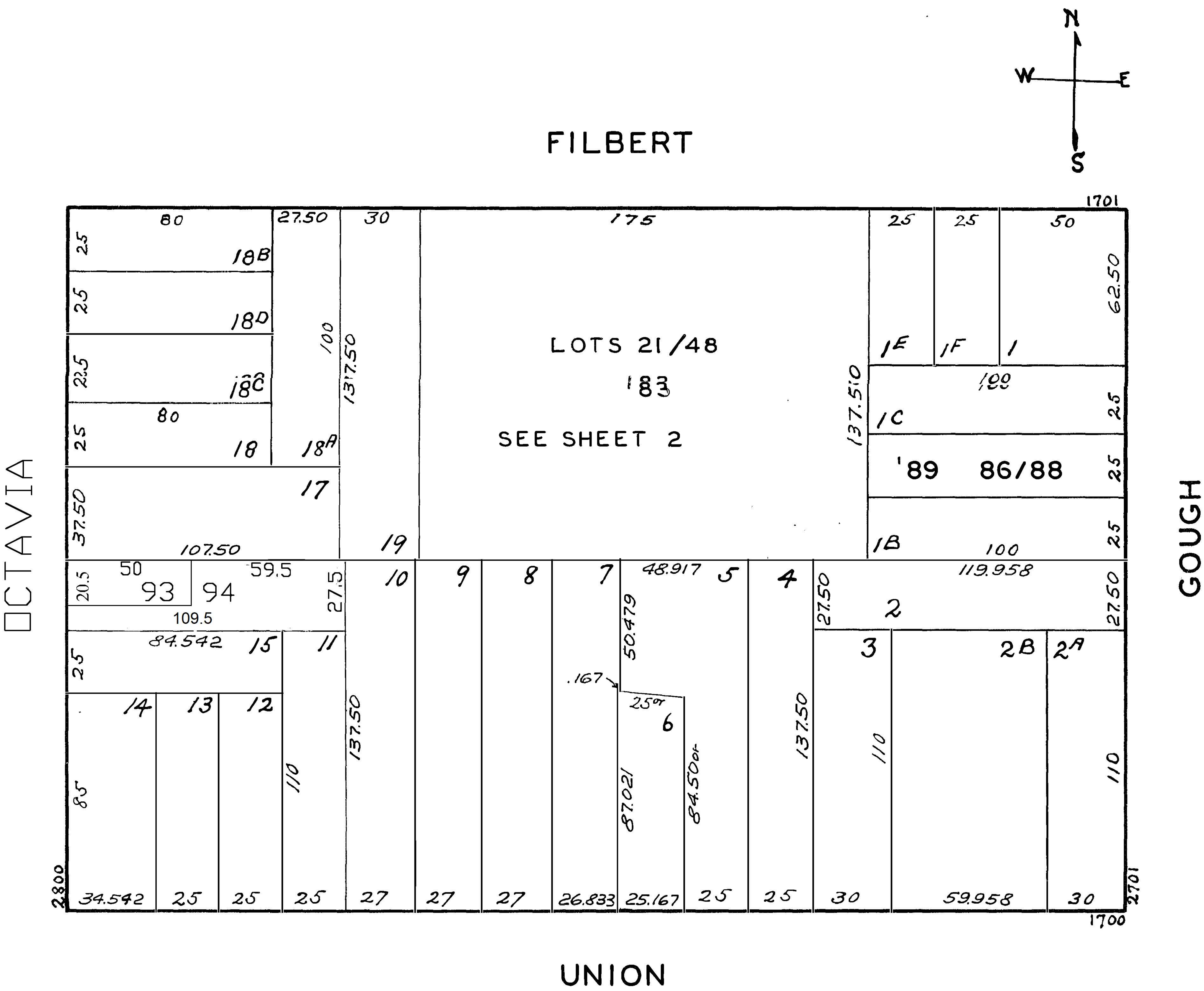


LOTS MERGED  
Lots INTO Lot  
10 - 20 - 1944

REVISED '83  
" '89

Revised 2002

lot 16 into lots 93 & 94 for 2002 roll



2743 GOUGH ST.

A CONDOMINIUM

LOT	UNIT	% COMM. AREA
86	1	35.5
87	2	35.5
88	3	29.0