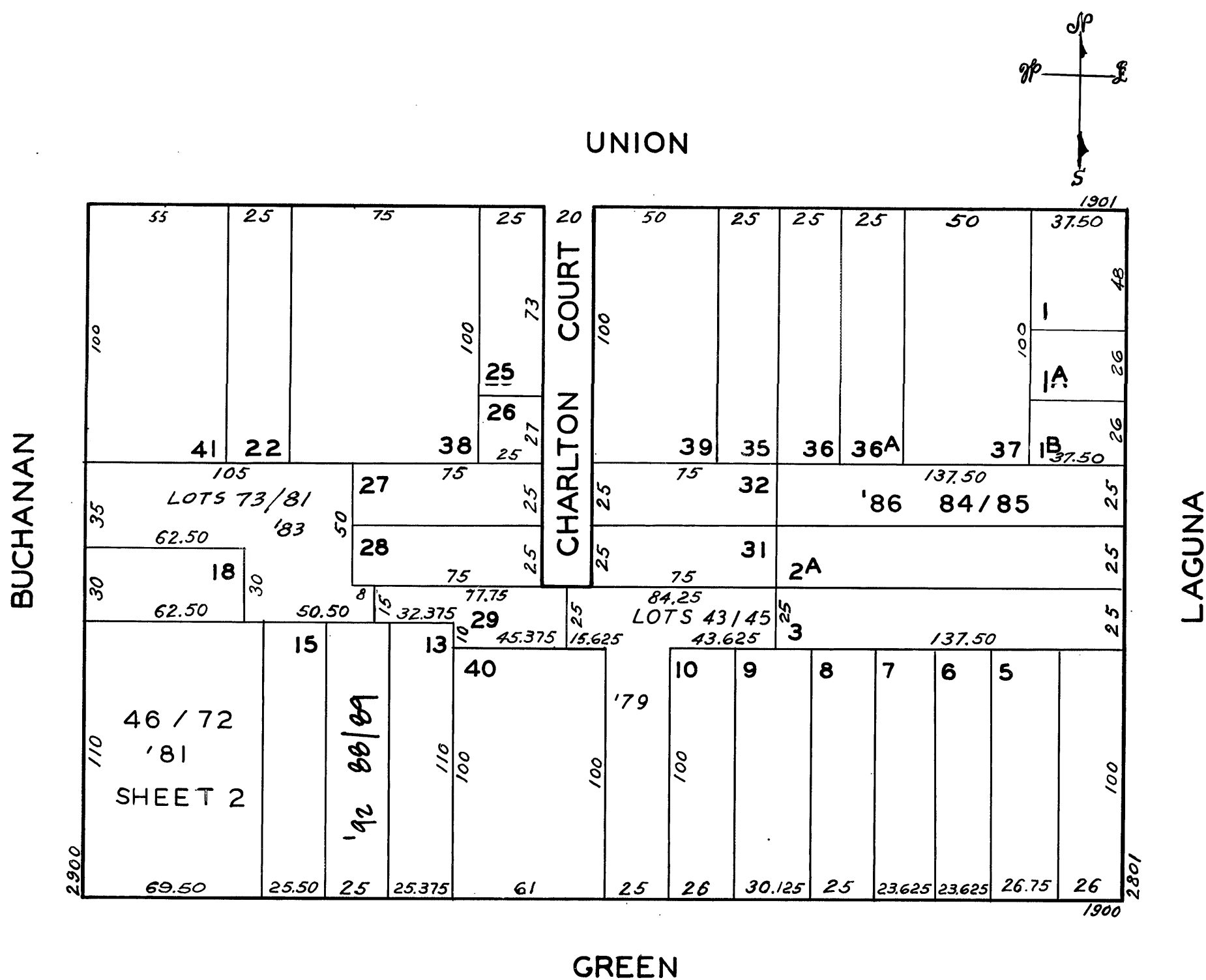


REVISED 1964  
" '70  
REVISED '73  
" '79  
" '81  
" '83  
" '86  
" '92

LOTS	INTO LOT	
30	11	1929
38	37	1944
17	16	1952
42	Omitted	1979



<u>LOT NO.</u>	<u>UNIT NO.</u>	<u>%COMMON AREA</u>
43	1	33.333
44	2	33.333
45	3	33.333

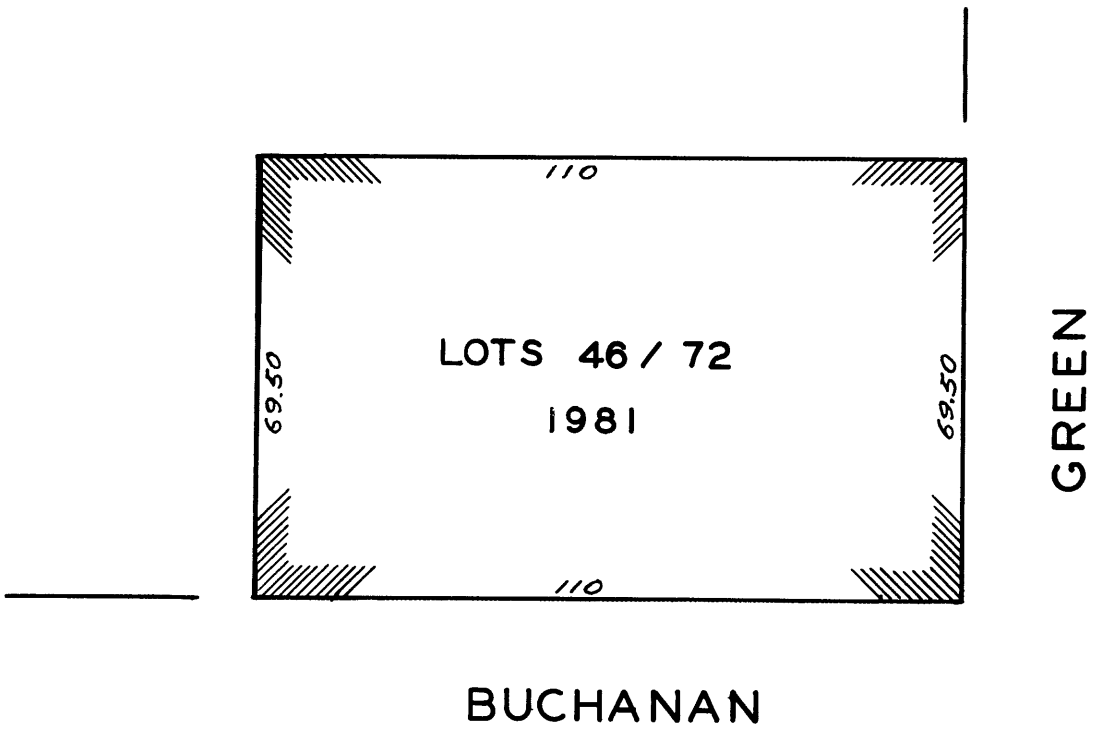
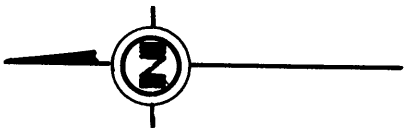
LOT NO.	UNIT NO.	% COMMON AREA
73	1	12.700
74	2	8.371
75	3	20.645
76	4	7.984
77	5	8.371
78	6	12.787
79	7	7.984
80	8	8.371
81	9	12.787

LOT	UNIT	% COMM. AREA
84	2829	48.05
85	2831	51.95

LOT	UNIT	% COMM. AREA
88	1970	50.02
89	1972	49.98

1990 GREEN STREET  
A CONDOMINIUM

LOT NO.	UNIT NO.	% COMMON AREA	LOT NO.	UNIT NO.	% COMMON AREA
46	101	2.885	60	307	2.643
47	102	2.110	61	401	4.743
48	104	3.845	62	404	4.906
49	105	4.520	63	405	4.520
50	107	2.622	64	407	2.643
51	201	3.673	65	501	4.743
52	202	2.110	66	504	4.906
53	204	3.845	67	505	4.520
54	205	4.520	68	507	2.643
55	207	2.643	69	601	4.743
56	301	3.673	70	604	4.906
57	302	2.110	71	605	4.520
58	304	3.845	72	607	2.643
59	305	4.520			



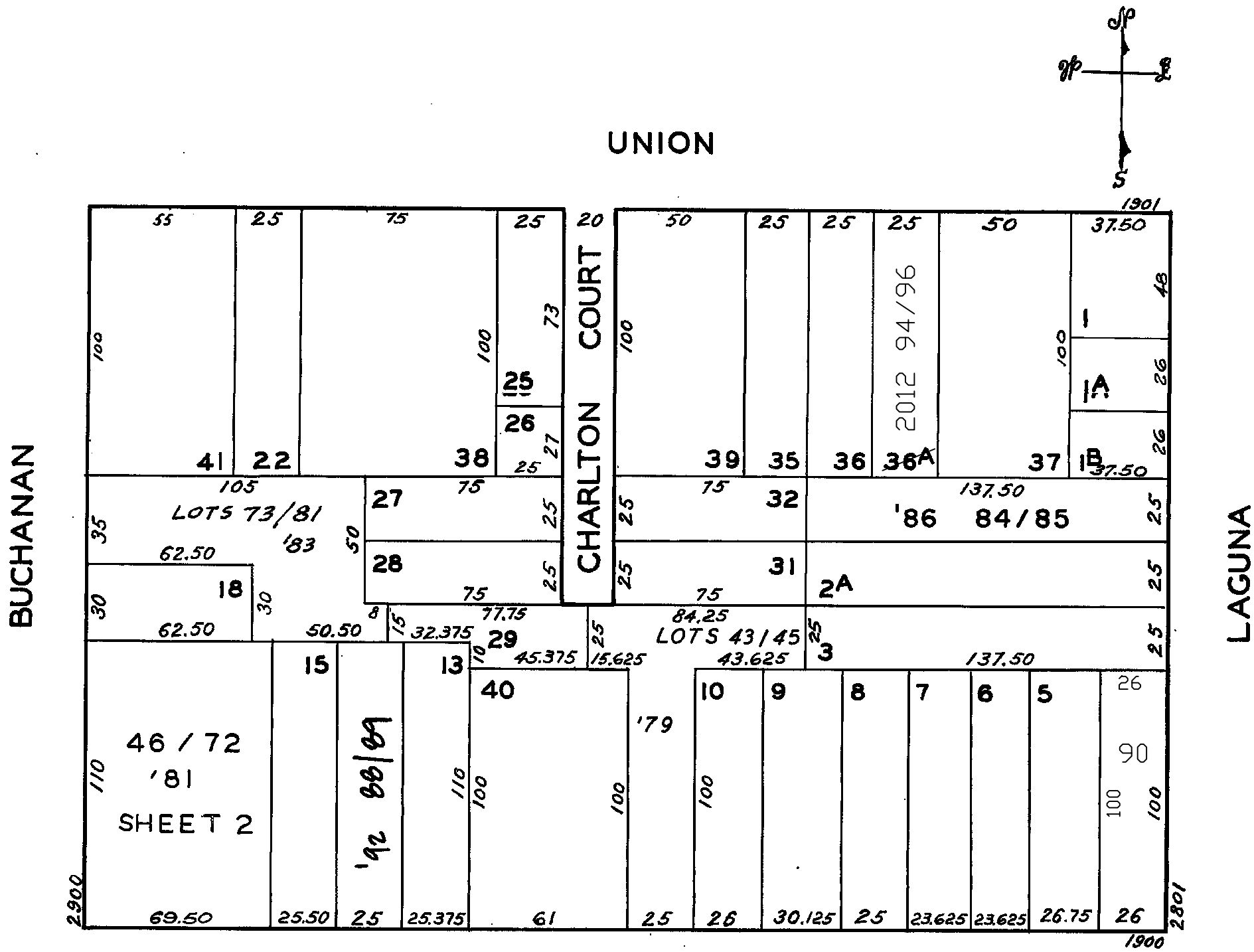
W A BLK. 244

LOTS MERGED

LOTS	INTO LOT	
30	11	1929
38	37	1944
17	16	1952
42	Omitted	1979

lot82&83 into lots90 for 2002 roll  
lot2A into lots91to93 for 2009 roll  
lot36A into lots94/96 for 2012 roll

REVISED 1964  
" '70  
REVISED '73  
" '79  
" '81  
" '83  
" '86  
" '92  
Revised 2002  
Revised 2009  
Revised 2012



1944-46-48 GREEN STREET  
A CONDOMINIUM

LOT NO.	UNIT NO.	%COMMON AREA
43	1	33.333
44	2	33.333
45	3	33.333

2920 BUCHANAN ST.  
A CONDOMINIUM

LOT NO.	UNIT NO.	%COMMON AREA
73	1	12.700
74	2	8.371
75	3	20.645
76	4	7.984
77	5	8.371
78	6	12.787
79	7	7.984
80	8	8.371
81	9	12.787

2829-2831 LAGUNA ST.  
A CONDOMINIUM

LOT	UNIT	% COMM. AREA
84	2829	48.05
85	2831	51.95

1970-1972 GREEN ST.  
A CONDOMINIUM

LOT	UNIT	% COMM. AREA
88	1970	50.02
89	1972	49.98