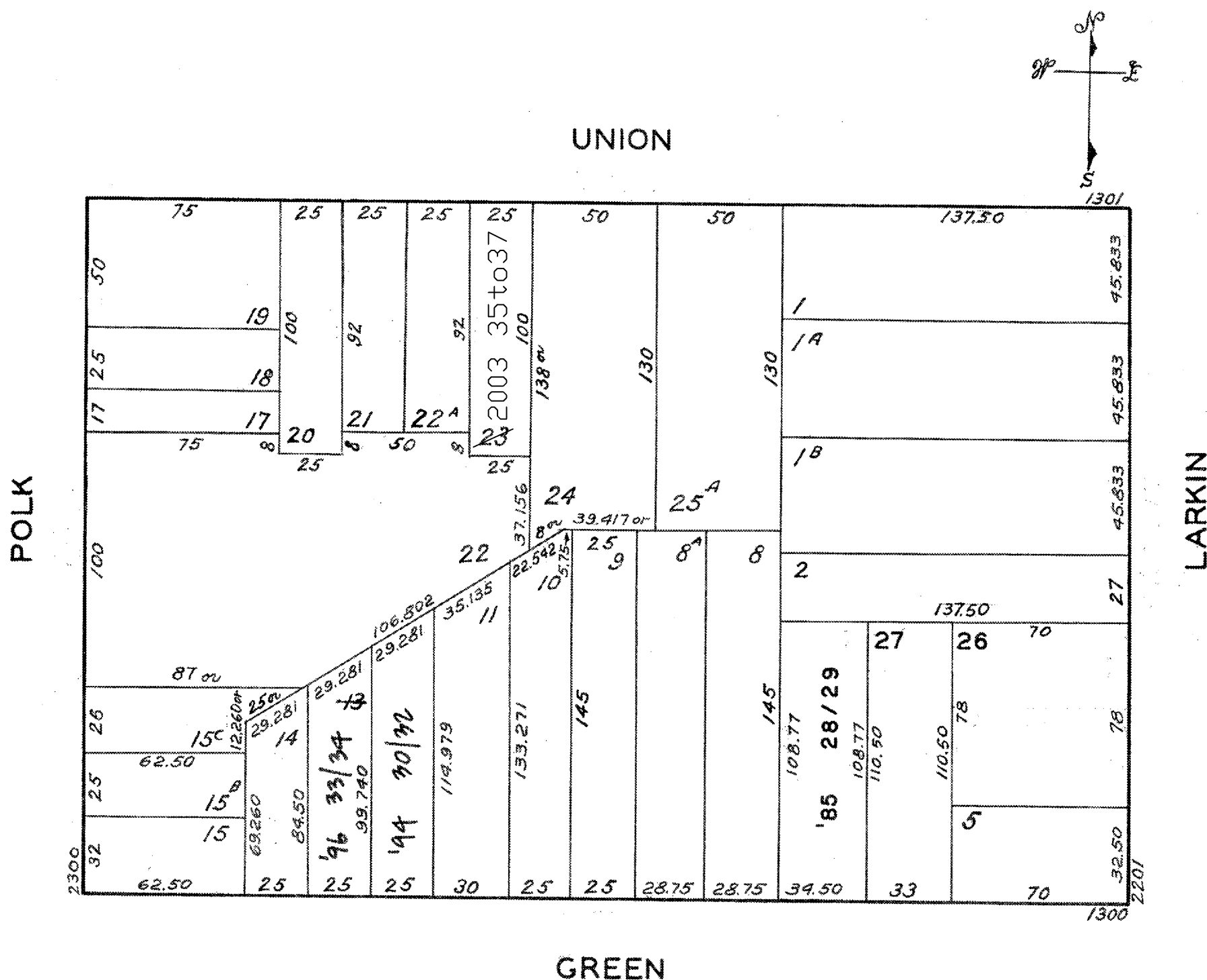


LOTS MERGED
 lot 25 into lot 24 '1916'
 " 15 & 16 " " 25 '1932'
 " 4 " " 3 '1952'
 " 7 " " 28/29-1985
 lot 23 into lots 35 to 37 for 2003 roll

© COPYRIGHT SAN FRANCISCO
 CITY & COUNTY ASSESSOR 1995

548
 W A BLK 24
 REVISED 1959
 " '85
 " '94
 " '96
 Revised 2003



1359-1363 UNION ST. A CONDOMINIUM		
LOT	UNIT	% COMM. AREA
35	1359	20
36	1361	20
37	1363	60

1326-1328 GREEN ST. A CONDOMINIUM		
LOT NO.	UNIT NO.	% COMMON AREA
28	1326	53.58
29	1328	46.42

1364-1366-1368 GREEN ST. A CONDOMINIUM		
LOT	UNIT	% COMM. AREA
30	1364	27.67
31	1366	38.18
32	1368	34.15

1370-1372 GREEN ST. A CONDOMINIUM		
LOT	UNIT	% COMM. AREA
33	1370	53.17
34	1372	46.83