

LOTS MERGED

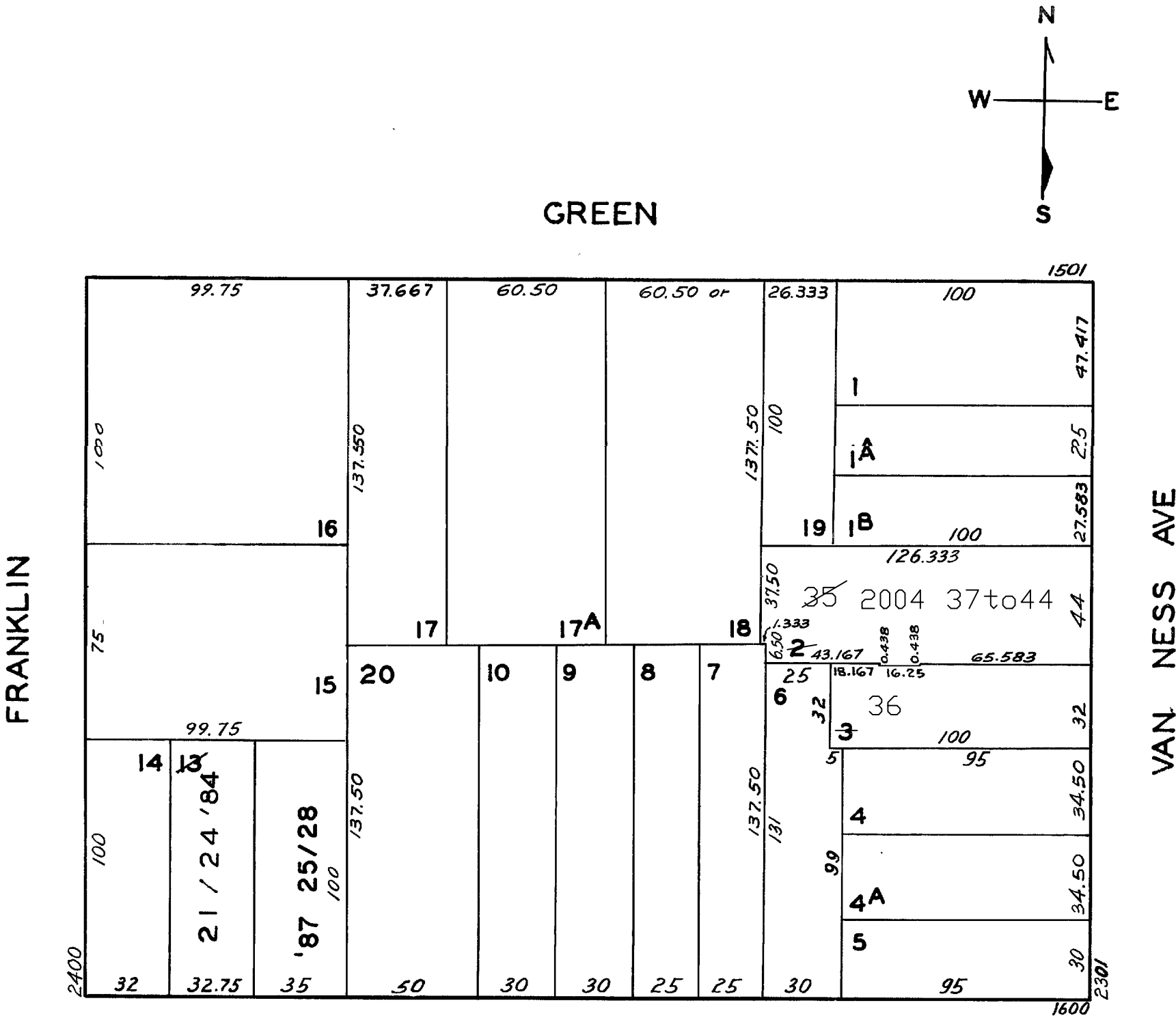
Lot 3A into Lot 6 - 1923
" 16A " " 15 - 1956
13 21/24 '84

lot2&3 into lots35&36 for 2004 roll
lot36 into lots39to44 for 2004 roll

W A BLK.95

REVISED 1977
" '84
" '87

Revised 2004



VALLEJO

1632 VALLEJO ST.		
A CONDOMINIUM		
LOT	UNIT	COMM. AREA
21	1	23.92
22	2	26.96
23	3	18.49
24	4	30.63

1628 VALLEJO ST.		
A CONDOMINIUM		
LOT	UNIT	% COMM. AREA
25	1	22.02
26	2	19.75
27	3	31.38
28	4	26.85

2315 VAN NESS AVE.		
A CONDOMINIUM		
LOT	UNIT	% COMM. AREA
37	1	12.14
38	2	14.35
39	3	12.30
40	4	12.33
41	5	12.30
42	6	12.33
43	7	12.11
44	8	12.14