

W A BLK. 395

LOTS MERGED

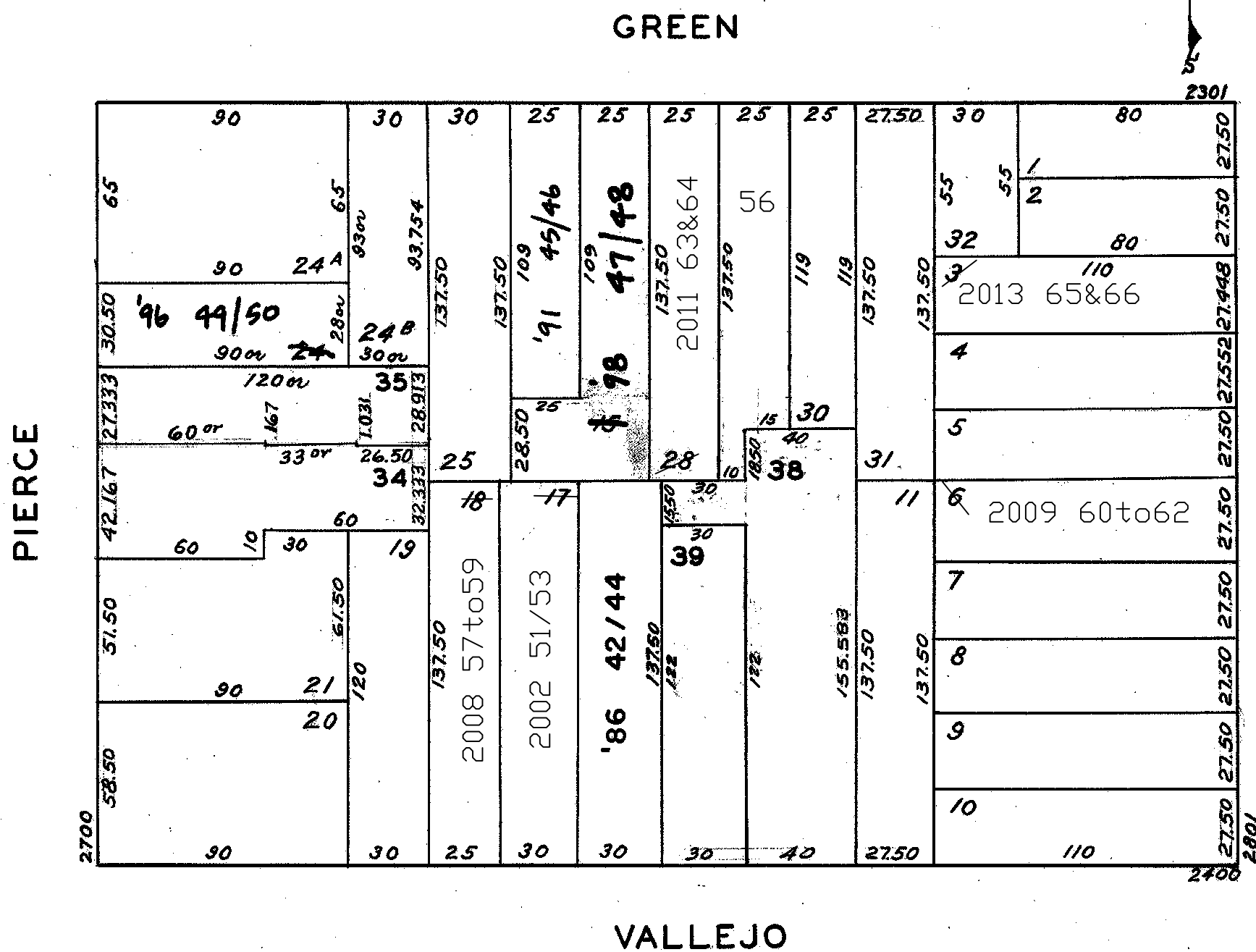
LOTS INTO LOT
27 - 15 - 1944
29 - 14 -

lot15 into lots47&48 for 1998 roll
lot17 into lots51to53 for 2002 roll
lots40&41 into lot56 for 2005 roll
lot18 into lots57to59 for 2008 roll
lot6 into lots60to62 for 2009 roll
lot28 into lots63&64 for 2011 roll
lot3 into lots65&66 for 2013 roll

2337-2339 GREEN ST.
A CONDOMINIUM

LOT NO.	UNIT NO.	% COMMON AREA
40	2337	40.70
41	2339	59.30

REVISED	'57
REVISED	'58
"	'65
"	'67
"	'83
"	'86
"	'91
"	'96
"	'98
Revised	2002
Revised	2005
Revised	2008
Revised	2009
Revised	2011
Revised	2013



2349-2351 GREEN ST.

A CONDOMINIUM

LOT	UNIT	% COMM. AREA
47	2349	49
48	2351	51

2450-2452-2454 VALLEJO ST.

A CONDOMINIUM

LOT	UNIT	% COMM. AREA
42	2450	31.161
43	2452	32.790
44	2454	36.049

2365-2367 GREEN ST.

A CONDOMINIUM

LOT	UNIT	% COMM. AREA
45	2365	50
46	2367	50

2456-2460 VALLEJO ST.

A CONDOMINIUM

LOT	UNIT	% COMM. AREA
51	2456	35.78
52	2458	33.55
53	2460	30.67

2740-2742 PIERCE ST.

A CONDOMINIUM

LOT	UNIT	% COMM. AREA
49	2740	50
50	2742	50