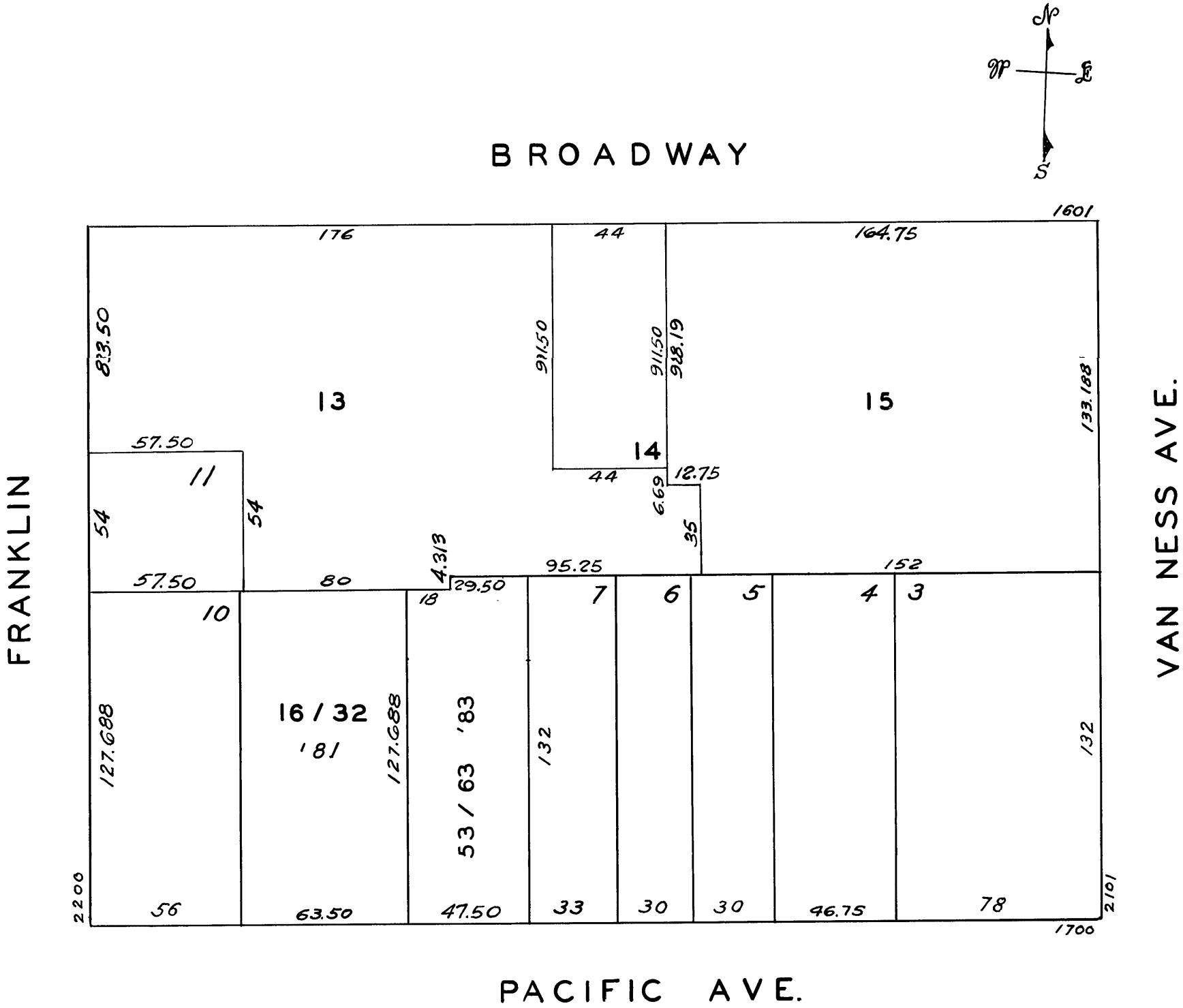


575

W.A. BLK. 95
REVISED 1959
" 1981
" '83

LOTS MERGED

LOTS INTO LOT 19.
8A 8 '953'



1770 PACIFIC AVE.

A CONDOMINIUM

LOT NO.	UNIT NO.	%COMMON AREA
16	17	4.926
17	101	5.360
18	102	5.337
19	103	5.969
20	104	5.988
21	201	6.082
22	202	6.101
23	203	5.969
24	204	5.988
25	301	6.082
26	302	6.101
27	303	5.969
28	304	5.988
29	401	6.082
30	402	6.101
31	403	5.969
32	404	5.988

1760 PACIFIC AVE.

A CONDOMINIUM

LOT	UNIT	%COMM AREA
53	1	4.264
54	1A	4.144
55	2	9.652
56	3	10.091
57	4	10.394
58	5	10.091
59	6	10.394
60	7	10.091
61	8	10.394
62	9	9.788
63	10	10.697