

ASSESSOR-RECORDER'S OFFICE

579

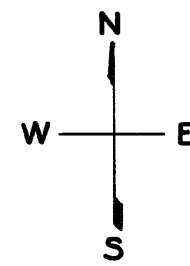
© COPYRIGHT SAN FRANCISCO
CITY & COUNTY ASSESSOR 1995

W A BLK. 2 41

SHEET 1

Lot 18 merged into lot 17 - '51

lot9B into lots54&55 for 2001 roll
lot15A into lots34&35 for 2002 roll
lot10 into lots50/53 for 2004 roll

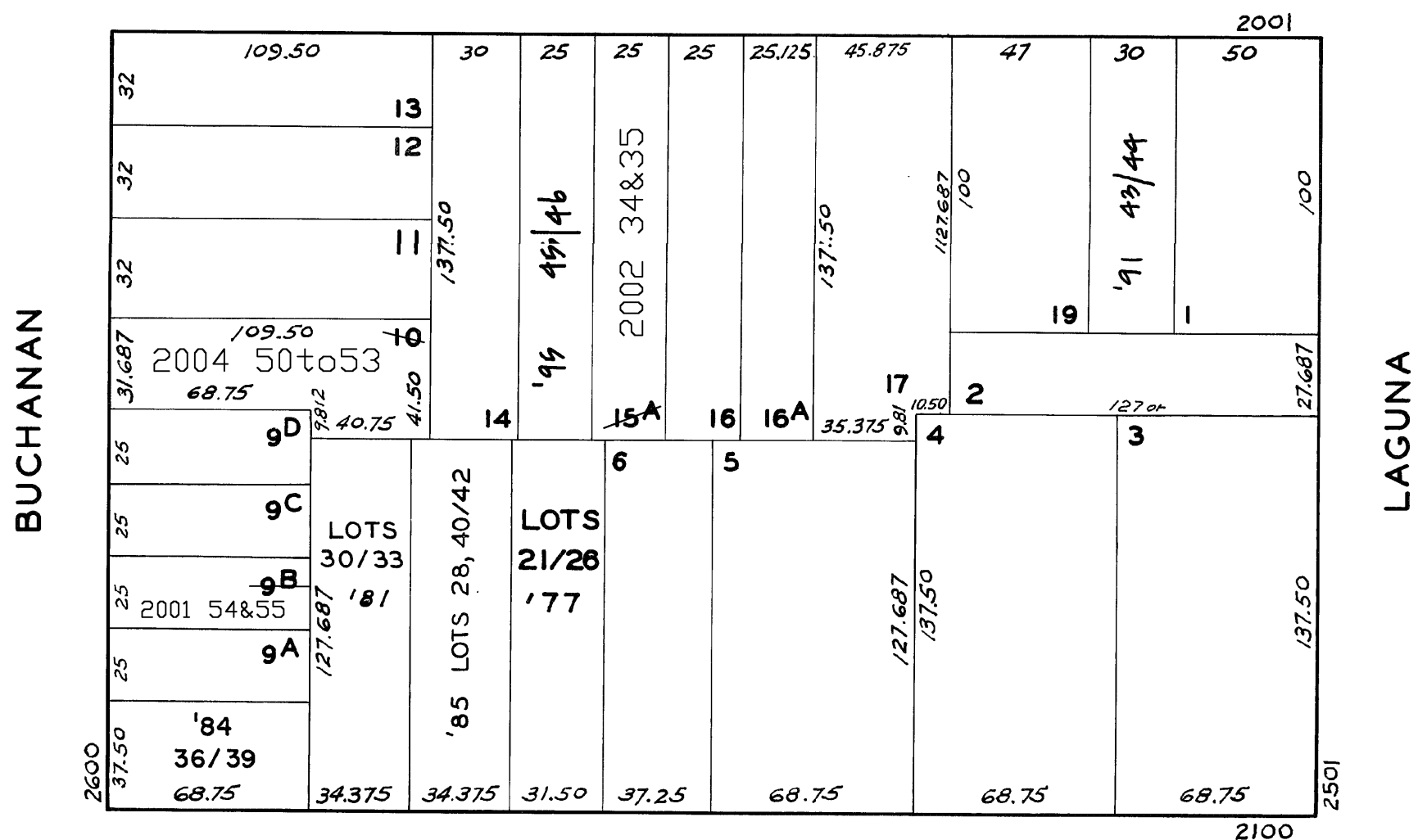


REVISED 1977

" 1981
" 1984
" '85
" '91
" '95

Revised 2001
Revised 2002
Revised 2004

BROADWAY



PACIFIC AVE.

2172 PACIFIC AVE.A CONDOMINIUM

LOT NO.	UNIT NO.	% COMMON AREA
30	1	39
31	2	12
32	3	17
33	4	32

2190-2196 PACIFIC AVE.A CONDOMINIUM

LOT NO.	UNIT NO.	% COMMON AREA
36	2190	22.882
37	2194	17.569
38	2196	29.606
39	2192	29.943

2170 PACIFIC AVE. (AMENDED)A CONDOMINIUM

LOT NO.	UNIT NO.	% COMMON AREA
40	2164	10
41	2166	37
28	2168	20
42	2170	33

2003-2005 BROADWAYA CONDOMINIUM

LOT	UNIT	% COMM. AREA
43	2003	50
44	2005	50

2063-2065 BROADWAYA CONDOMINIUM

LOT	UNIT	% COMM. AREA
45	2063	60.55
46	2065	34.45

2604-2606 BUCHANAN ST.A CONDOMINIUM

LOT	UNIT	% COMM. AREA
54	2604	47.85
55	2606	52.15

2057-2059 BROADWAY ST.A CONDOMINIUM

LOT	UNIT	% COMM. AREA
34	2057	47.664
35	2059	52.336

2614 BUCHANAN ST.A CONDOMINIUM

LOT	UNIT	% COMM. AREA
50	1	42
51	2	38
52	3	12
53	4	8

2160 PACIFIC AVENUE

A CONDOMINIUM

LOT NO.	UNIT NO.	% COMMON AREA
21	1	14.487
22	2	18.101
23	3	14.487
24	4	14.052
25	5	14.487
26	6	24.386

