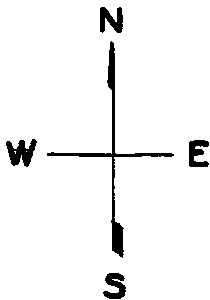


589

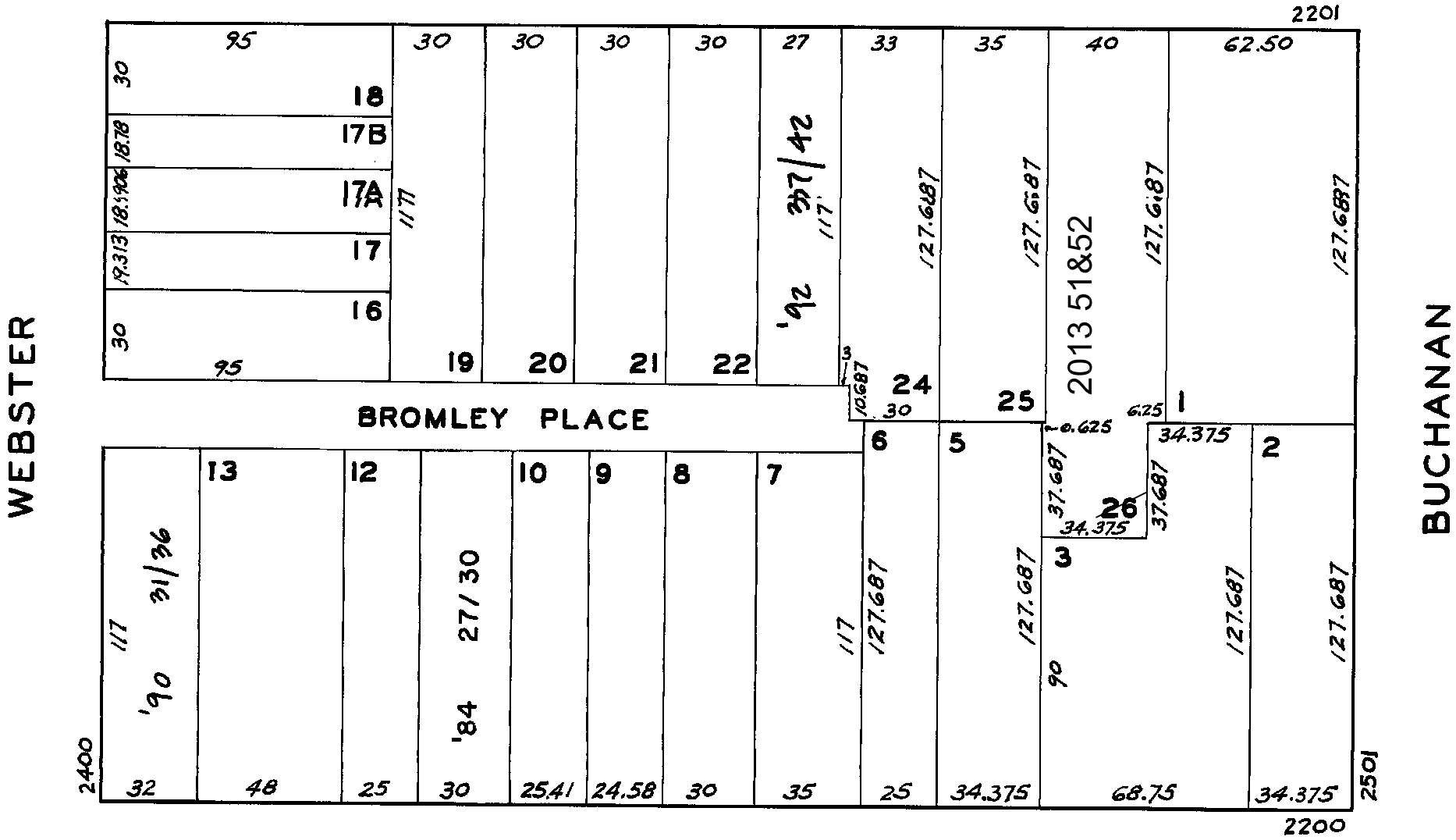
Lot 4 merged into lot 3 - 1944
" 14 " " 13 - "
lot26 into lots51&52 for 2013 roll

W A BLK. 267



REVISED '84
" '90
" '92
Revised 2013

PACIFIC AVE.



JACKSON

2266 JACKSON ST.
A CONDOMINIUM

LOT NO.	UNIT NO.	% COMMON AREA
27	2266	32.3
28	2266-A	21.7
29	2268	32.3
30	2268-A	13.7

2400 WEBSTER ST.
A CONDOMINIUM

LOT	UNIT	% COMM. AREA
31	1	14.32
32	2	15.36
33	3	17.40
34	4	17.76
35	5	17.40
36	6	17.76

2217 PACIFIC AVE
A CONDOMINIUM

LOT	UNIT	% COMM. AREA
37	1	14.82
38	2	17.83
39	3	13.37
40	4	28.20
41	5	8.45
42	6	17.33