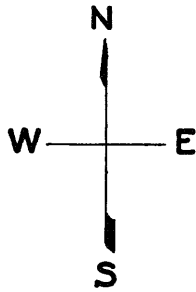


ASSESSOR-RECORDER'S OFFICE

© COPYRIGHT SAN FRANCISCO
CITY & COUNTY ASSESSOR 1995

W A BLK. 240

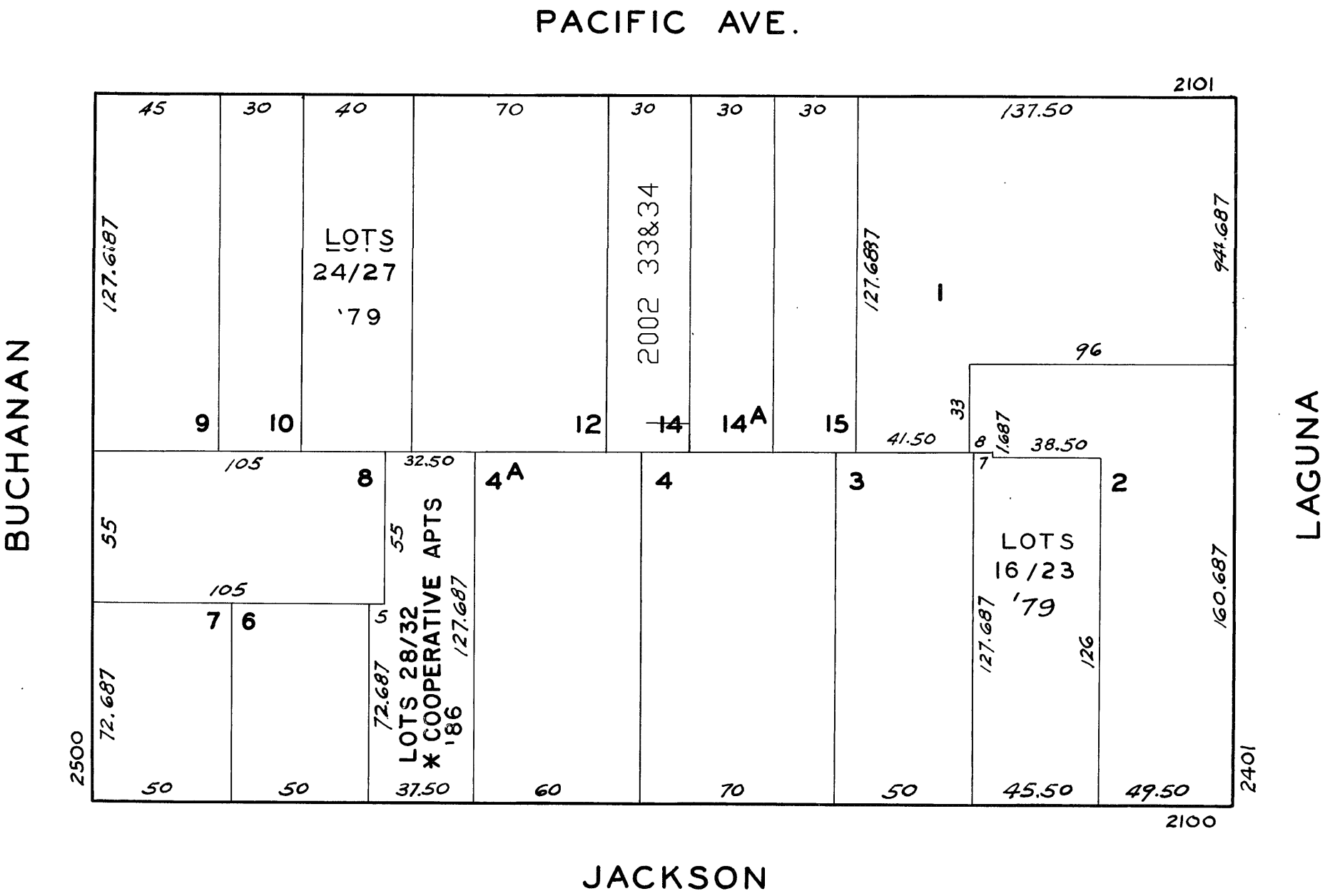
590



REVISED 1979
Revised 2002

LOTS MERGED
Lot 13 INTO Lot 12 19-55'

lot14 into lots33&34 for 2002 roll



2175-77-79-81 PACIFIC AVE.
A CONDOMINIUM

LOT NO.	UNIT NO.	% COMMON AREA
24	2175	23.594
25	2181	23.594
26	2177	26.406
27	2179	26.406

2106 JACKSON ST.
A CONDOMINIUM

LOT NO.	UNIT NO.	% COMMON AREA
16	1	13.423
17	2	13.423
18	3	13.323
19	4	13.423
20	5	13.423
21	6	13.423
22	7	13.423
23	8	14.100

* FOR TAXATION ONLY

2151 PACIFIC AVE.
A CONDOMINIUM

LOT	UNIT	% COMM. AREA
33	1	44.67
34	2	55.33