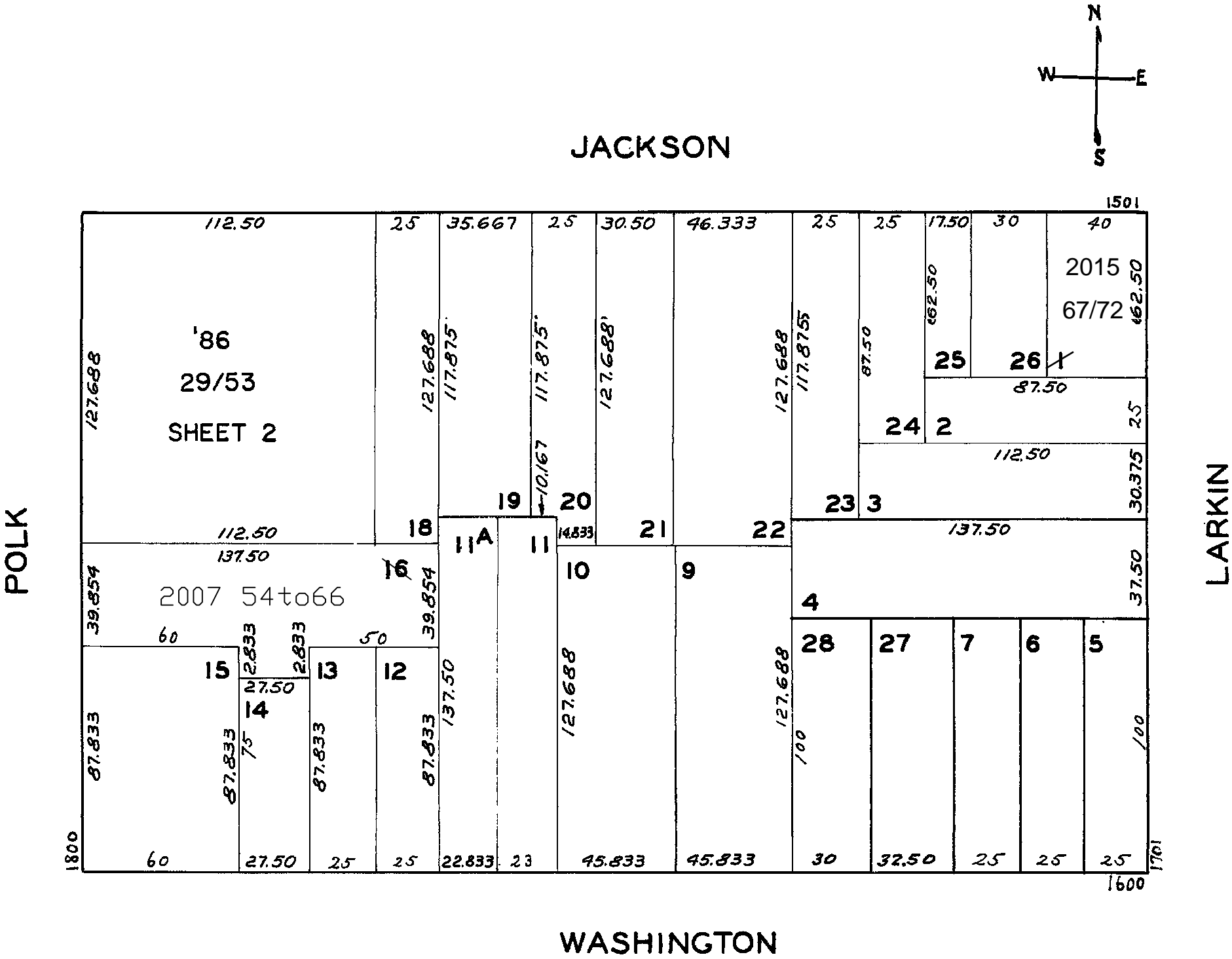


lot16 into lots54to66 for 2007 roll  
lot 1 into lots 67to72 for 2015 roll

REVISED 1958  
" '86  
Revised 2007  
REVISED 2015



1810 POLK ST.		
A CONDOMINIUM		
LOT	UNIT	% COMM. AREA
54	COMM'L	18.36
55	1	4.68
56	2	4.70
57	3	3.72
58	4	4.79
59	5	9.26
60	6	9.67
61	7	9.48
62	8	9.66
63	9	6.05
64	10	6.39
65	11	6.57
66	12	6.67

© COPYRIGHT SAN FRANCISCO  
CITY & COUNTY ASSESSOR 1995

JACKSON PLAZA  
1591 JACKSON ST.  
A CONDOMINIUM

LOT NO	UNIT NO	%COMMON AREA
29	101	29.96
30	301	4.00
31	302	3.00
32	303	2.78
33	304	2.97
34	305	2.08
35	306	2.22
36	307	2.76
37	308	4.25
38	401	3.89
39	402	2.93
40	403	2.68
41	404	2.87
42	405	2.08
43	406	2.11
44	407	2.66
45	408	4.17
46	501	3.68
47	502	2.83
48	503	2.58
49	504	2.73
50	505	2.08
51	506	2.02
52	507	2.56
53	508	4.11

