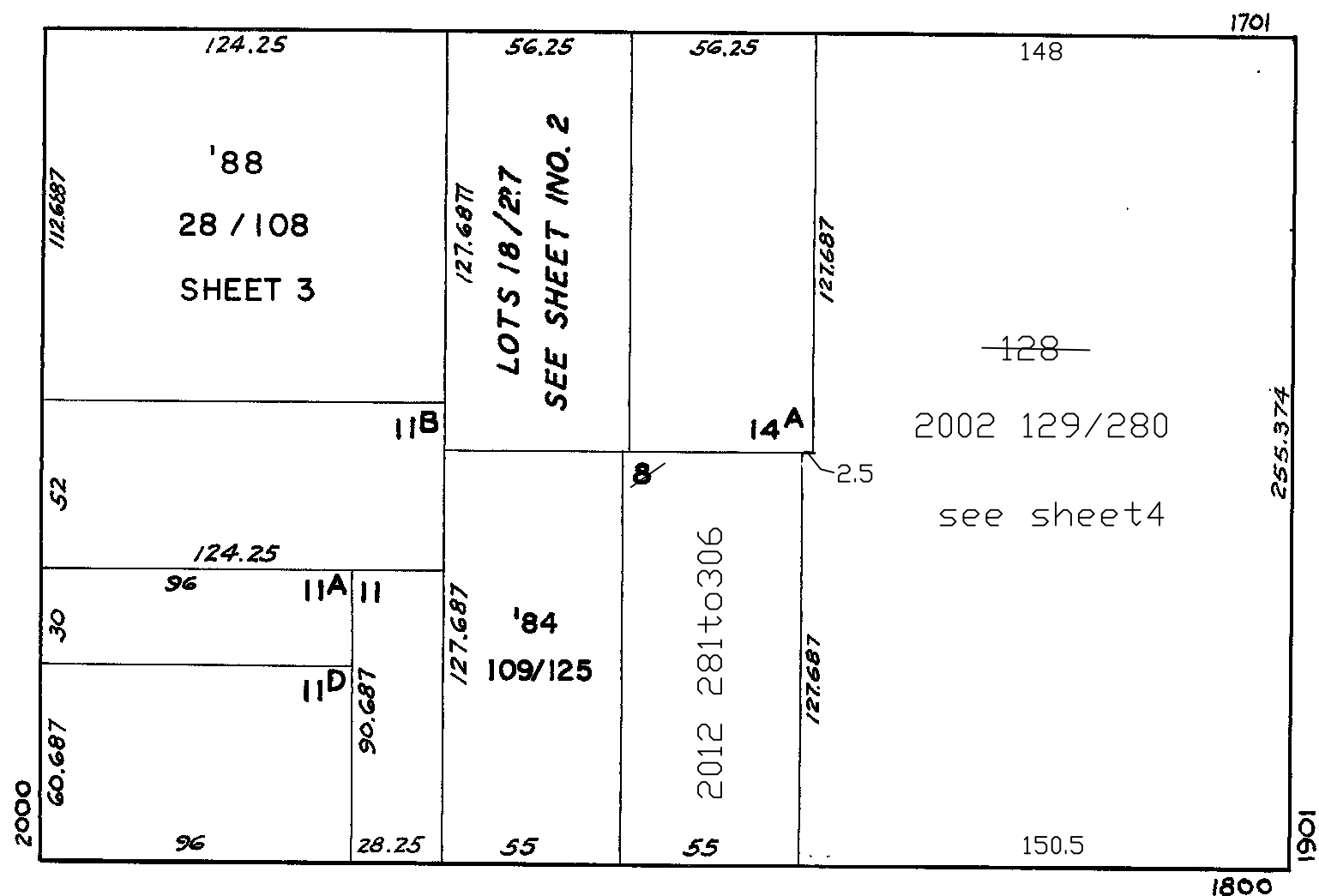


599 SHEET 1

WA BLK 91	
REVISED	1959
"	'64
"	'72
"	'84
"	'88
"	'89
Revised	2002
Revised	2012

FRANKLIN



VAN NESS AVE.

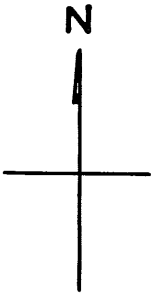
WASHINGTON

A CONDOMINIUM

LOT NO.	UNIT NO.	% COMMON AREA
109	106	7.26
110	105	7.63
111	104	3.04
112	103	2.29
113	102	2.29
114	101	3.04
115	204	7.42
116	203	7.63
117	202	5.32
118	201	5.31
119	304	7.42
120	303	7.63
121	302	5.32
122	301	5.31
123	403	12.46
124	402	5.32
125	401	5.31

© COPYRIGHT SAN FRANCISCO
CITY & COUNTY ASSESSOR 1995

1755 JACKSON ST.
A CONDOMINIUM

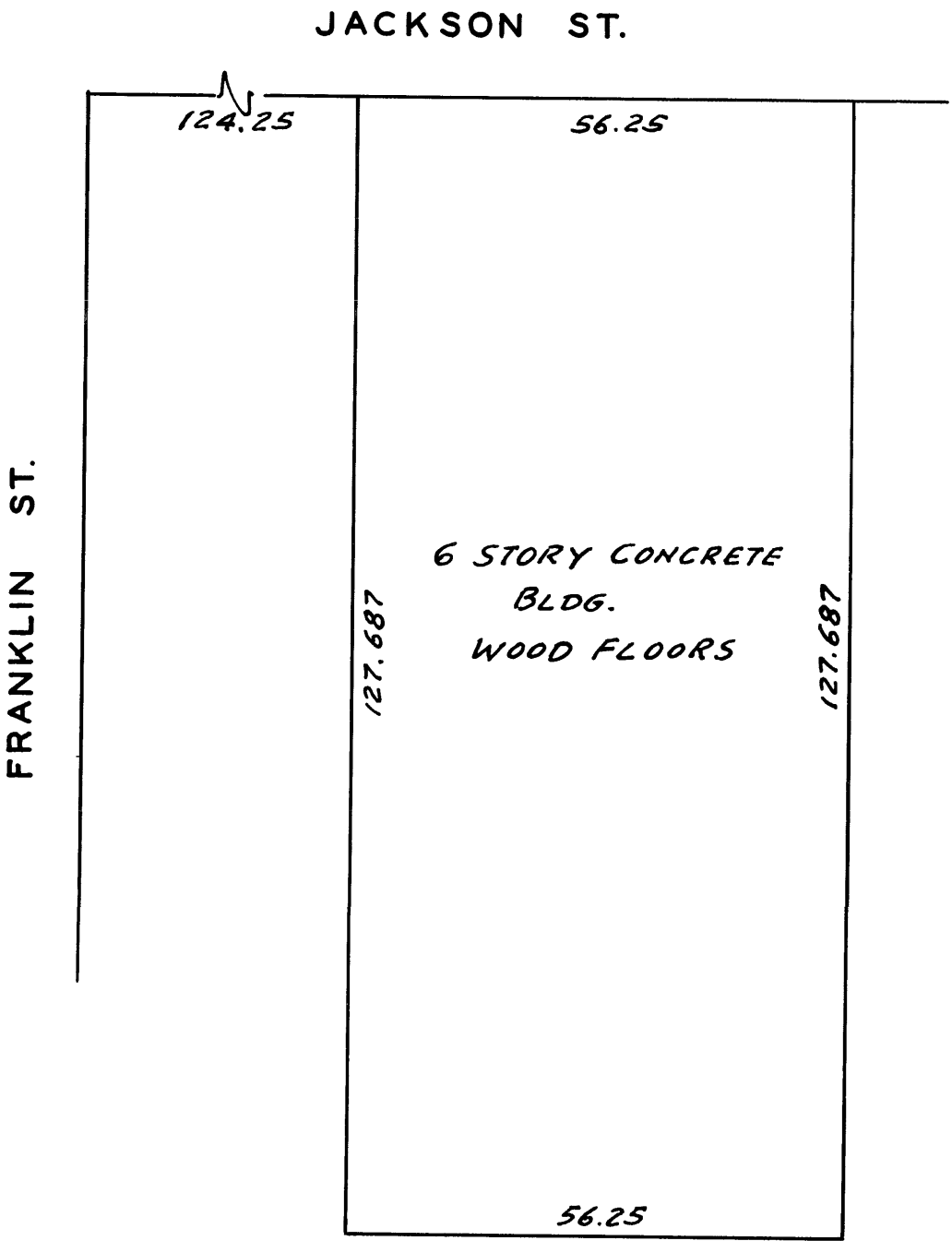


SCALE: 1"=20'

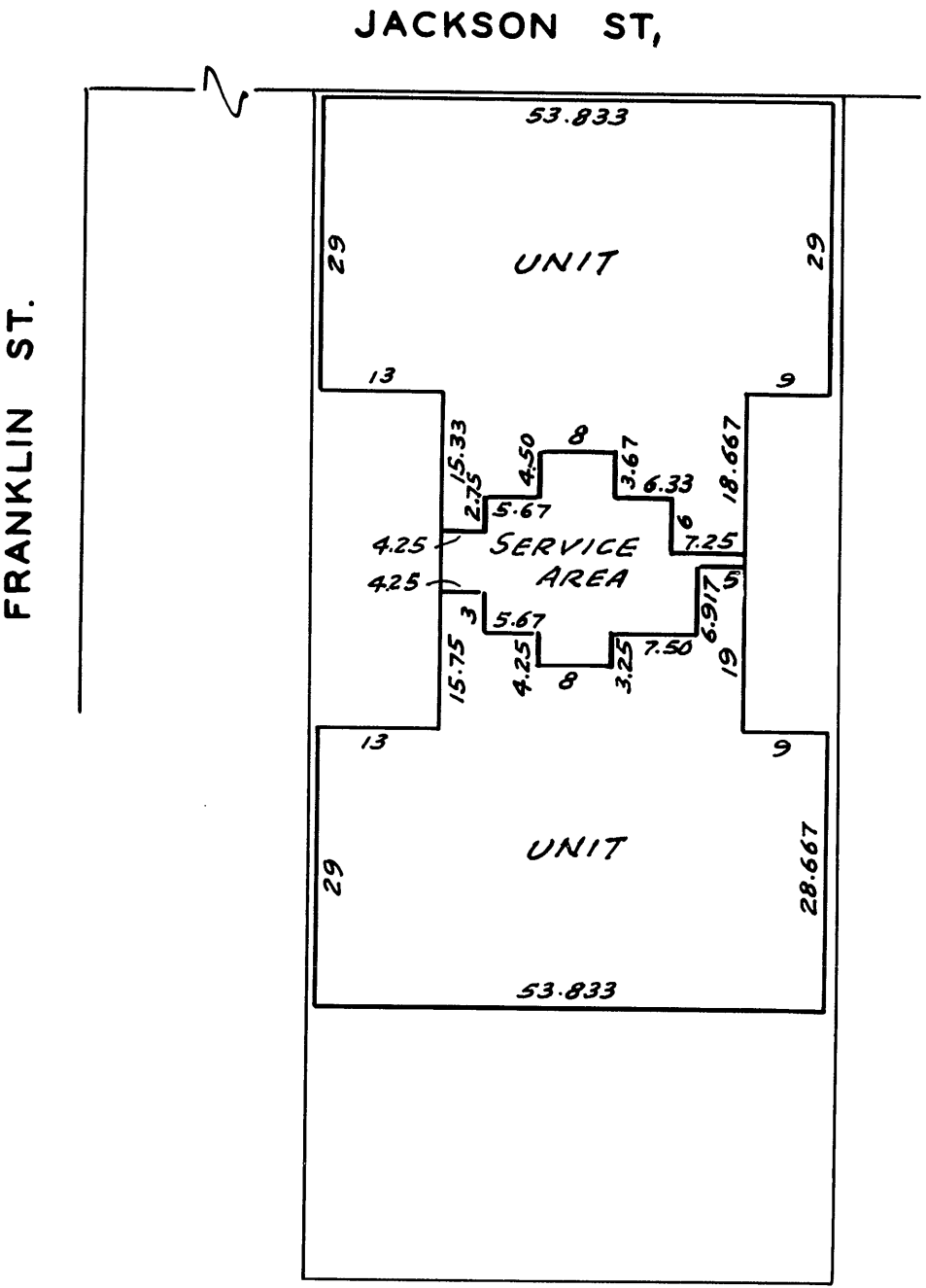
LOT NO.	UNIT NO.	PERCENTAGE COMMON AREA
18	201	10%
19	202	10
20	303	10
21	304	10
22	405	10
23	406	10
24	507	10
25	508	10
26	609	10
27	610	10

NOTE

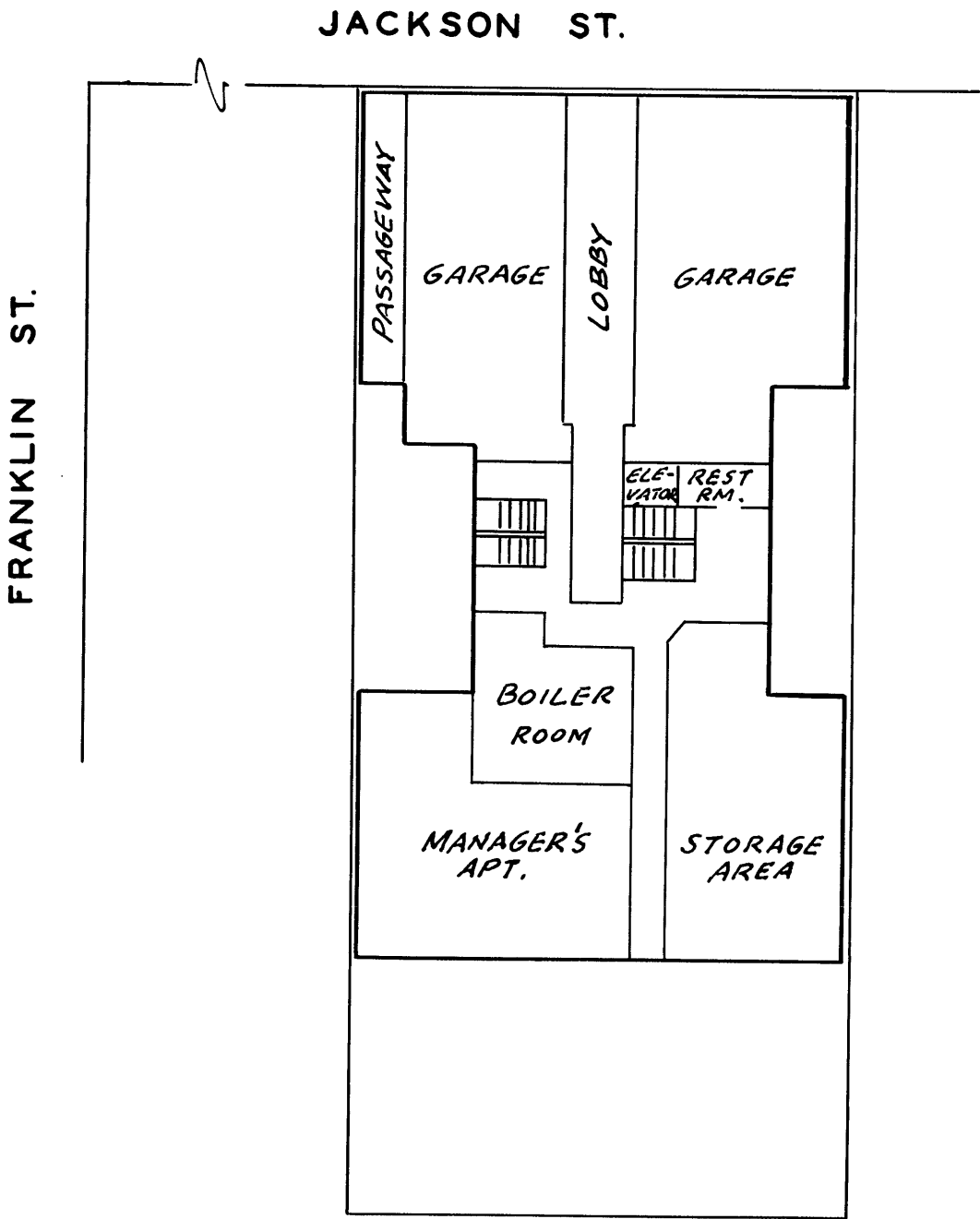
The entire subdivided property, excepting the units,
is "Common Area."



SITE MAP



TYPICAL FLOOR



1ST FLOOR

JACKSON TOWER

(2040 FRANKLIN ST.)

599
SHT. 3

© COPYRIGHT SAN FRANCISCO
CITY & COUNTY ASSESSOR 1995

A CONDOMINIUM

LOT	UNIT	% COMM. AREA	LOT	UNIT	% COMM. AREA
28	501	1.501	69	906	0.719
29	502	0.926	70	907	1.390
30	503	1.385	71	908	0.946
31	504	1.246	72	909	1.482
32	505	1.517	73	1001	1.500
33	506	0.719	74	1002	0.926
34	507	1.390	75	1003	1.385
35	508	0.946	76	1004	1.246
36	509	1.482	77	1005	1.517
37	601	1.500	78	1006	0.719
38	602	0.926	79	1007	1.390
39	603	1.385	80	1008	0.946
40	604	1.246	81	1009	1.482
41	605	1.517	82	1101	1.500
42	606	0.719	83	1102	0.926
43	607	1.390	84	1103	1.385
44	608	0.946	85	1104	1.246
45	609	1.482	86	1105	1.517
46	701	1.500	87	1106	0.719
47	702	0.926	88	1107	1.390
48	703	1.385	89	1108	0.946
49	704	1.246	90	1109	1.482
50	705	1.517	91	1201	1.500
51	706	0.719	92	1202	0.926
52	707	1.390	93	1203	1.385
53	708	0.946	94	1204	1.246
54	709	1.482	95	1205	1.517
55	801	1.500	96	1206	0.719
56	802	0.926	97	1207	1.390
57	803	1.385	98	1208	0.946
58	804	1.246	99	1209	1.482
59	805	1.517	100	1401	1.500
60	806	0.719	101	1402	0.926
61	807	1.390	102	1403	1.385
62	808	0.946	103	1404	1.246
63	809	1.482	104	1405	1.517
64	901	1.500	105	1406	0.719
65	902	0.926	106	1407	1.390
66	903	1.385	107	1408	0.946
67	904	1.246	108	1409	1.482
68	905	1.517			

1701 JACKSON ST
1800 WASHINGTON ST.
1901 VAN NESS AVE.
A CONDOMINIUM

LOT	UNIT	% COMM. AREA	LOT	UNIT	% COMM. AREA	LOT	UNIT	% COMM. AREA	LOT	UNIT	% COMM. AREA
129	R01	1.03	169	306	0.80	209	511	0.76	249	715	0.49
130	R02	1.04	170	307	0.53	210	512	0.54	250	716	0.80
131	R03	1.53	171	308	0.77	211	513	0.80	251	717	0.54
132	101	0.81	172	309	0.75	212	514	0.34	252	718	0.77
133	102	0.52	173	311	0.76	213	515	0.49	253	719	0.75
134	103	0.73	174	312	0.54	214	516	0.80	254	801	0.76
135	104	0.34	175	313	0.80	215	517	0.54	255	802	0.53
136	105	0.33	176	314	0.34	216	518	0.77	256	803	0.80
137	106	0.80	177	315	0.49	217	519	0.75	257	804	0.34
138	107	0.53	178	316	0.80	218	601	0.76	258	805	0.49
139	108	0.77	179	317	0.54	219	602	0.53	259	806	0.80
140	109	0.74	180	318	0.77	220	603	0.80	260	807	0.53
141	110A	0.79	181	319	0.75	221	604	0.34	261	808	0.77
142	110B	0.79	182	401	0.76	222	605	0.49	262	809	0.75
143	111	0.76	183	402	0.53	223	606	0.80	263	811	0.76
144	112	0.57	184	403	0.80	224	607	0.53	264	812	0.54
145	118	0.77	185	404	0.34	225	608	0.77	265	813	0.80
146	119	0.75	186	405	0.49	226	609	0.75	266	814	0.34
147	201	0.91	187	406	0.80	227	611	0.76	267	815	0.49
148	202	0.54	188	407	0.53	228	612	0.54	268	816	0.80
149	203	0.88	189	408	0.77	229	613	0.80	269	817	0.54
150	204	0.34	190	409	0.75	230	614	0.34	270	818	0.77
151	205	0.49	191	411	0.76	231	615	0.49	271	819	0.75
152	206	0.80	192	412	0.54	232	616	0.80	272	911	0.76
153	207	0.53	193	413	0.80	233	617	0.54	273	912	0.54
154	208	0.77	194	414	0.34	234	618	0.77	274	913	0.80
155	209	0.74	195	415	0.49	235	619	0.75	275	914	0.34
156	211	0.76	196	416	0.80	236	701	0.76	276	915	0.49
157	212	0.54	197	417	0.54	237	702	0.53	277	916	0.80
158	213	0.80	198	418	0.77	238	703	0.80	278	917	0.54
159	214	0.34	199	419	0.75	239	704	0.34	279	918	0.77
160	215	0.49	200	501	0.76	240	705	0.49	280	919	0.75
161	216	0.80	201	502	0.53	241	706	0.80			
162	218	0.77	202	503	0.80	242	707	0.53			
163	219	0.75	203	504	0.34	243	708	0.77			
164	301	0.76	204	505	0.49	244	709	0.75			
165	302	0.53	205	506	0.80	245	711	0.76			
166	303	0.80	206	507	0.53	246	712	0.54			
167	304	0.34	207	508	0.77	247	713	0.80			
168	305	0.49	208	509	0.75	248	714	0.34			