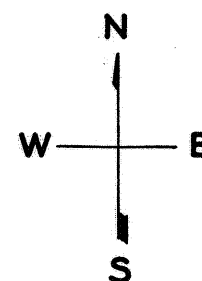


Lot 6 merged into lot 5 -1931

© COPYRIGHT SAN FRANCISCO
CITY & COUNTY ASSESSOR 1995

W A BLK. 123

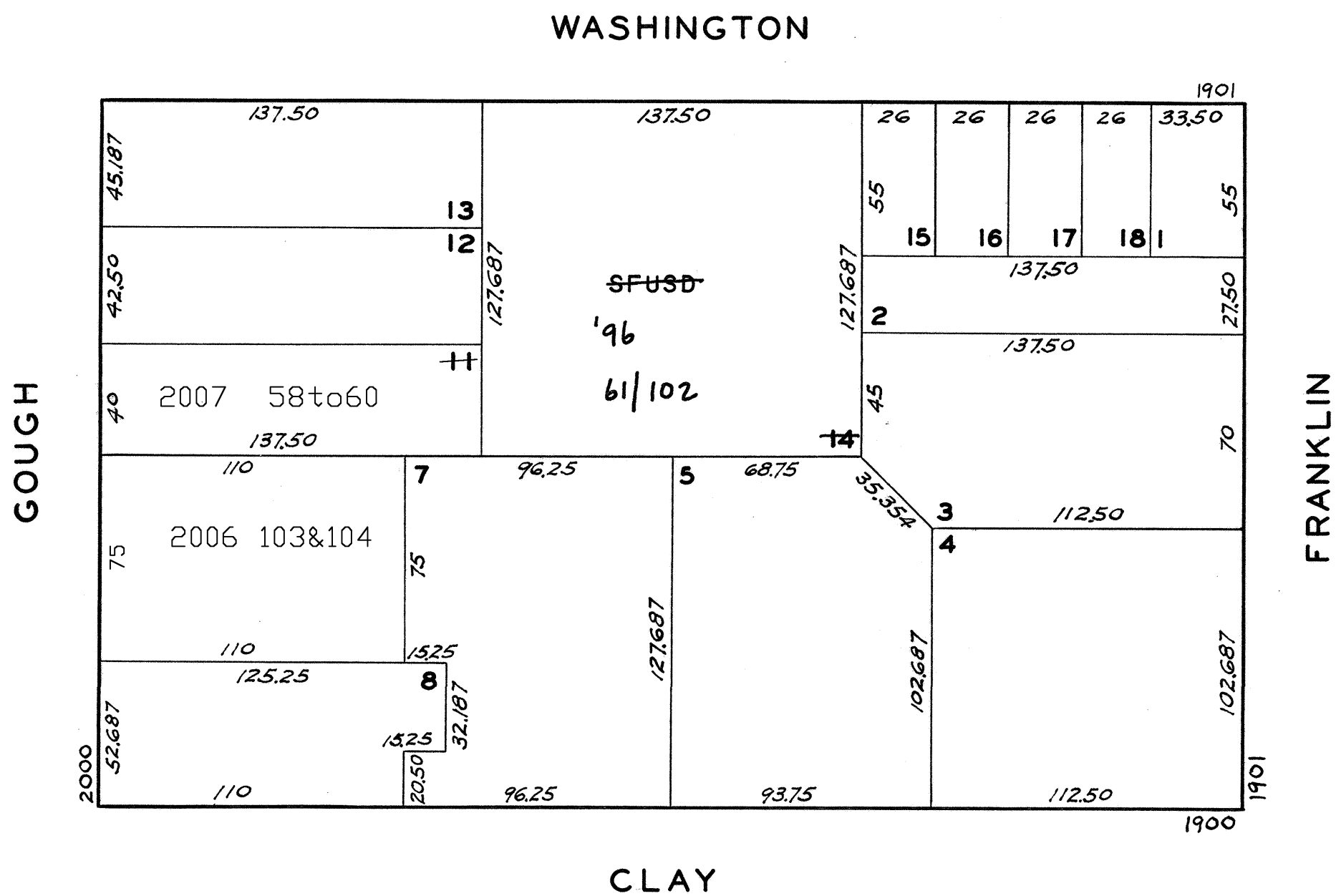


REVISED 1984

" '96

Revised 2006
Revised 2007

lots 9&10 into lots 103&104 for 2006 roll
lot 11 into lots 58 to 60 for 2007 roll



2004-2010 GOUGH ST.		
A CONDOMINIUM		
LOT	UNIT	% COMM. AREA
103	2004	75
104	2010	25

2030 GOUGH ST.	
LOT	UNIT
58	1
59	2
60	3