

W A BLK. 236

BUCHANAN

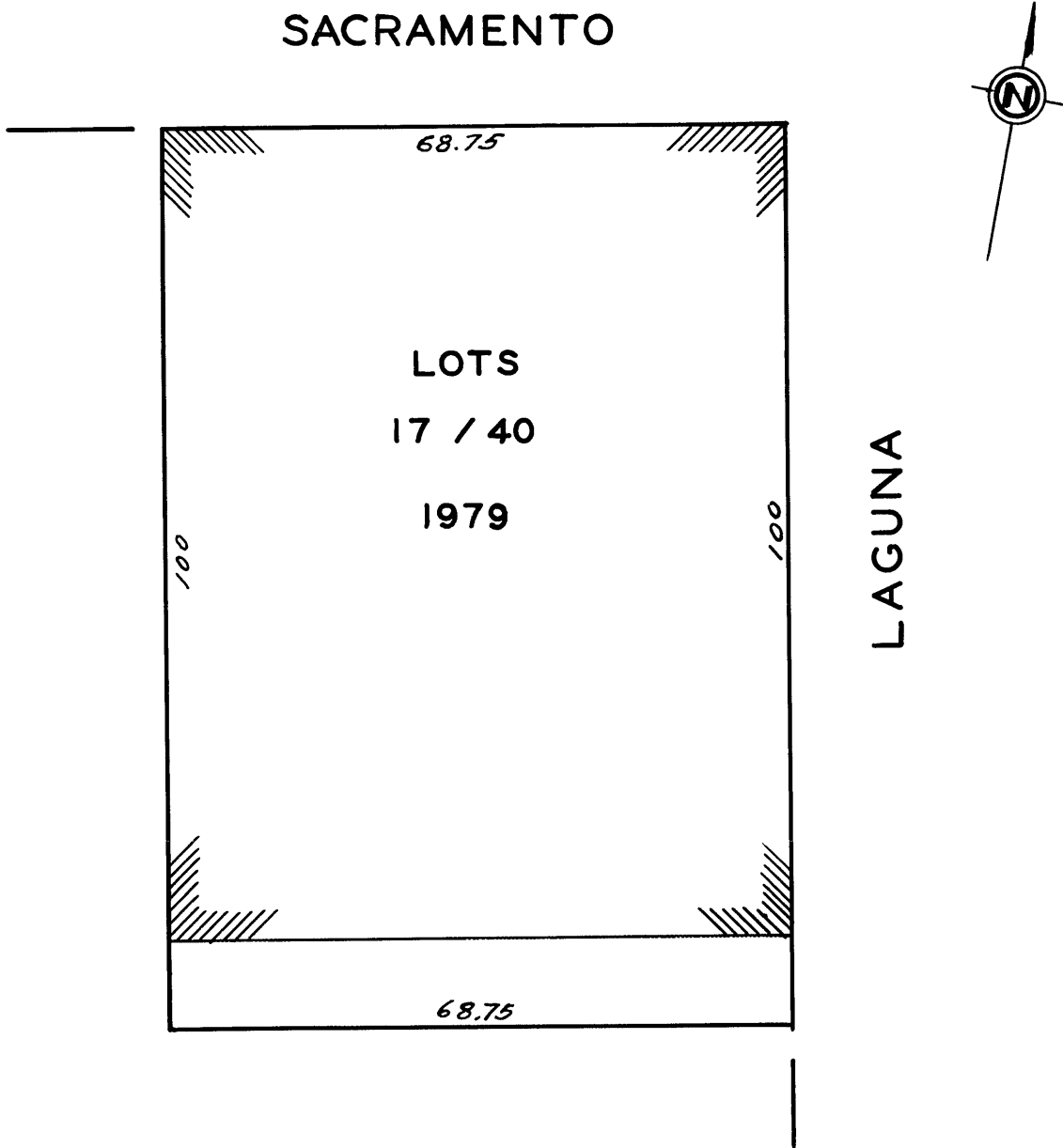
LAGUNA

CALIFORNIA

LOT NO.	UNIT NO.	% COMMON AREA	LOT NO.	UNIT NO.	% COMMON AREA
41	101	5.888	49	301	6.333
42	102	5.788	50	302	6.260
43	103	6.308	51	303	6.325
44	104	6.313	52	304	6.313
45	201	6.333	53	401	6.333
46	202	6.260	54	402	6.260
47	203	6.325	55	403	6.325
48	204	6.313	56	404	6.313

THE LAFAYETTE
A CONDOMINIUM

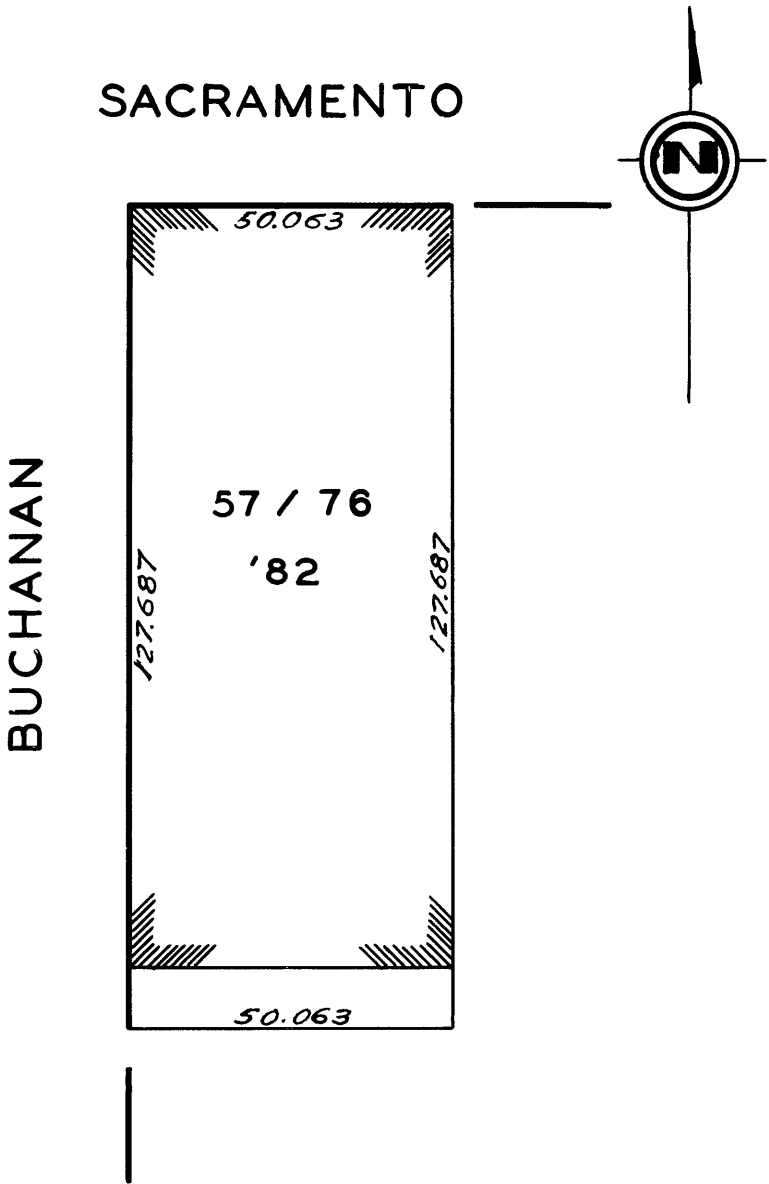
LOT NO.	UNIT NO.	% COMMON AREA	LOT NO.	UNIT NO.	% COMMON AREA
17	101	3.784	29	401	4.481
18	102	4.589	30	402	4.589
19	103	4.792	31	403	4.819
20	104	2.305	32	404	3.017
21	201	4.481	33	501	4.481
22	202	4.589	34	502	4.589
23	203	4.819	35	503	4.819
24	204	3.017	36	504	3.017
25	301	4.481	37	601	4.481
26	302	4.589	38	602	4.589
27	303	4.819	39	603	4.819
28	304	3.017	40	604	3.017



2299 SACRAMENTO ST.

A CONDOMINIUM

LOT NO.	UNIT NO.	% COMMON AREA
57	1	3.259
58	2	3.904
59	3	5.431
60	4	5.158
61	5	4.907
62	6	4.836
63	7	5.489
64	8	5.330
65	9	4.907
66	10	4.836
67	11	5.489
68	12	5.330
69	14	4.907
70	15	4.836
71	16	5.489
72	17	5.330
73	18	4.907
74	19	4.836
75	20	5.489
76	21	5.330



RECORDED DEC. 128, 1979
CONDO BOOK '13' PGS 64/67

FORMER BLK 638 LOT 10

APRIL 1982 *21.7*

BROOK APARTMENT

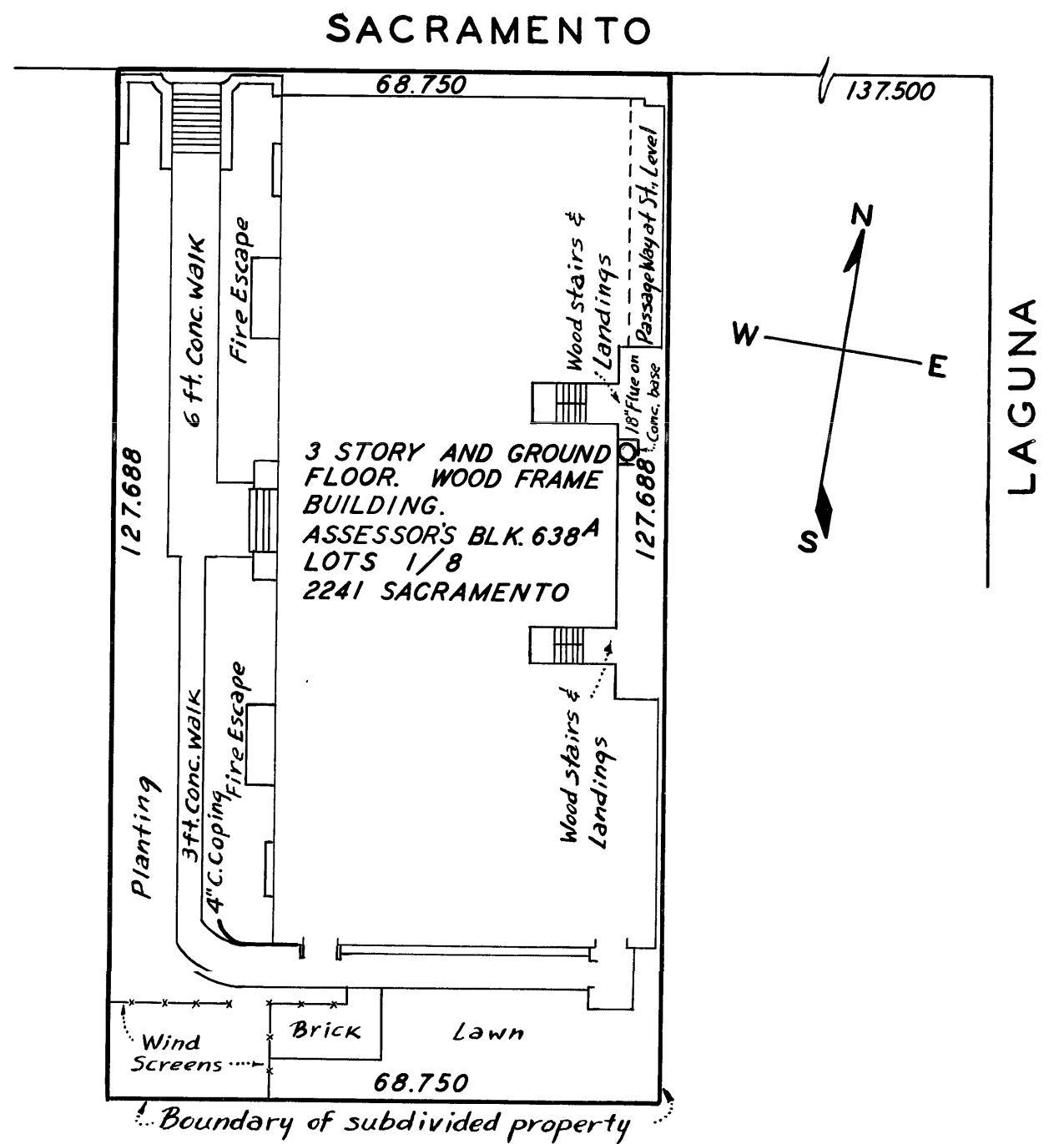
A CONDOMINIUM

2241 SACRAMENTO ST.

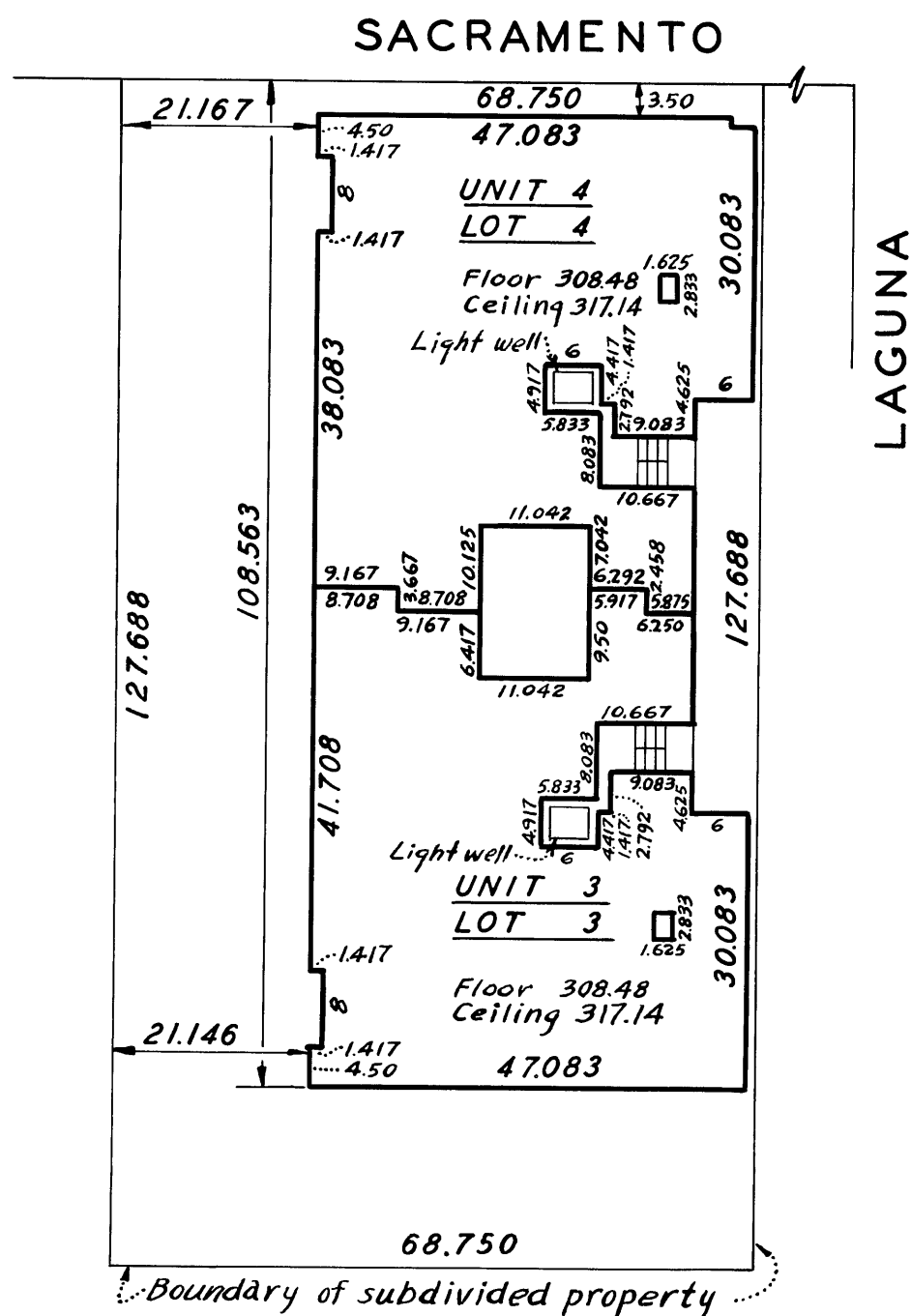
NOTES:

The entire subdivided property,
excepting all units, is "common area"

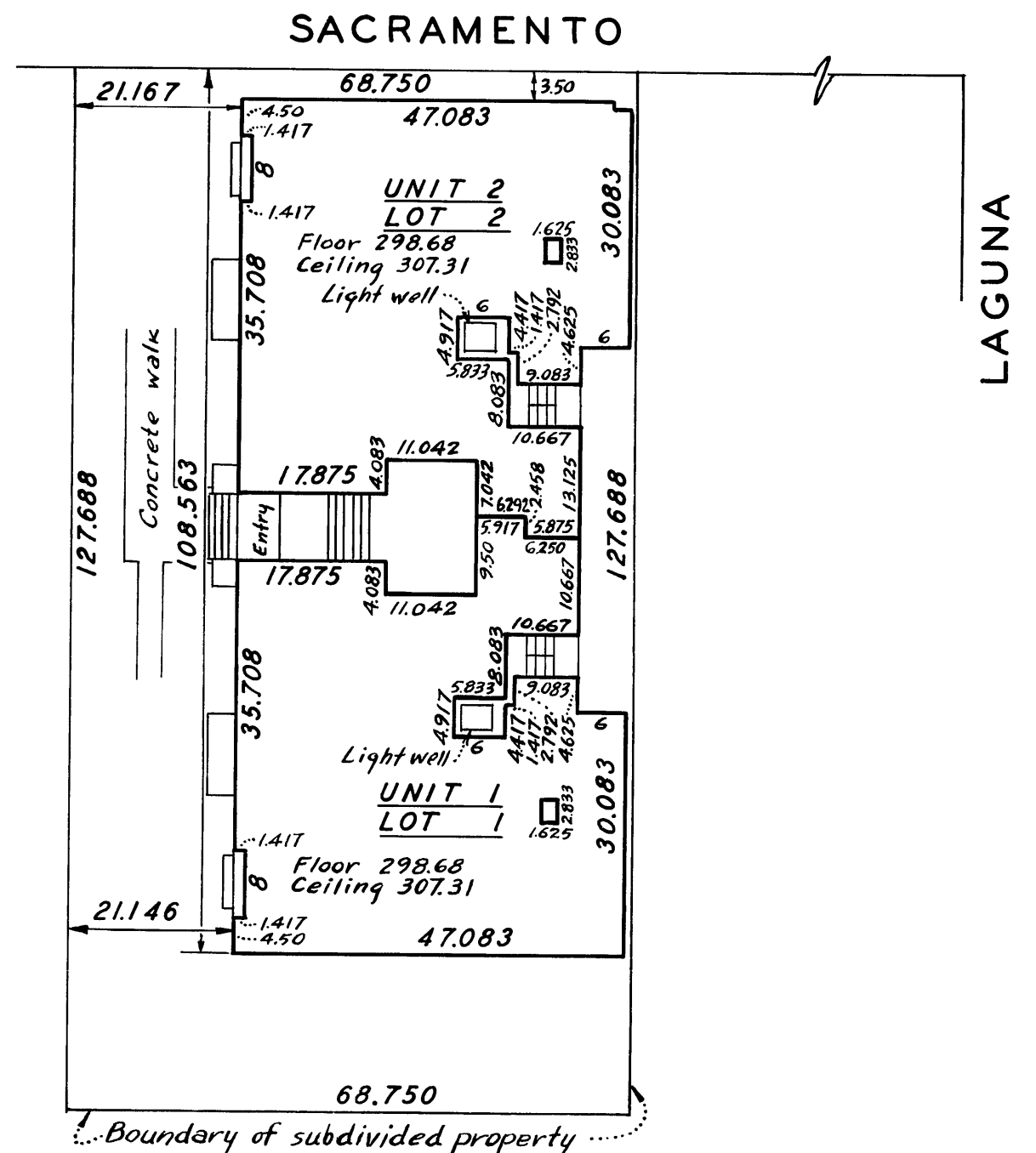
<u>LOT</u>	<u>UNIT NO.</u>	<u>COMMON AREA PERCENT INT. PER LOT</u>
1.	1	15.20
2.	2	15.47
3.	3	14.94
4.	4	14.67
5.	5	14.40
6.	6	14.14
7.	7	5.32
8.	8	5.86



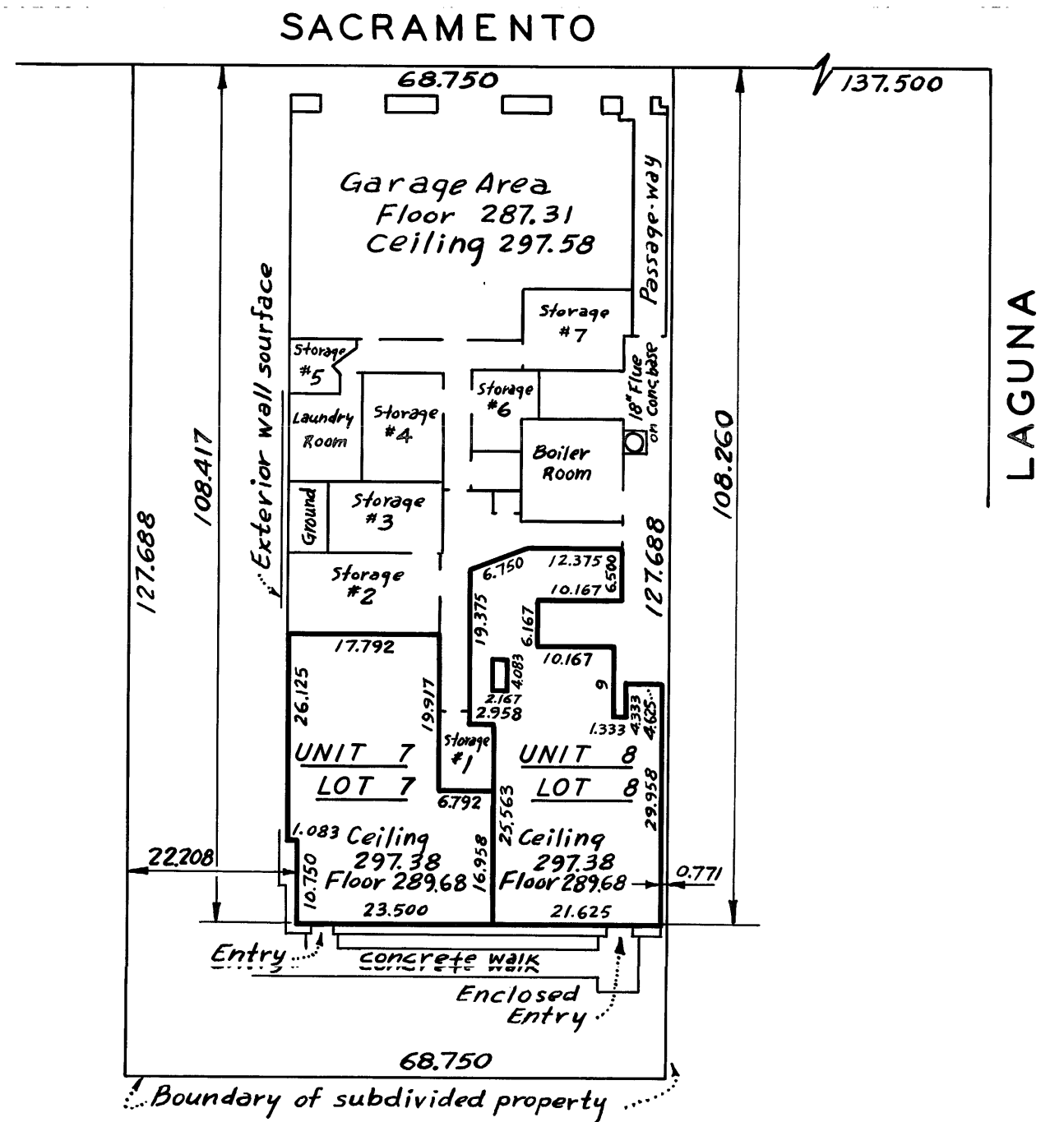
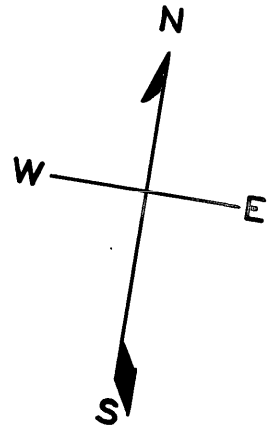
PROPERTY SITE
SCALE: 1" = 20'-0"



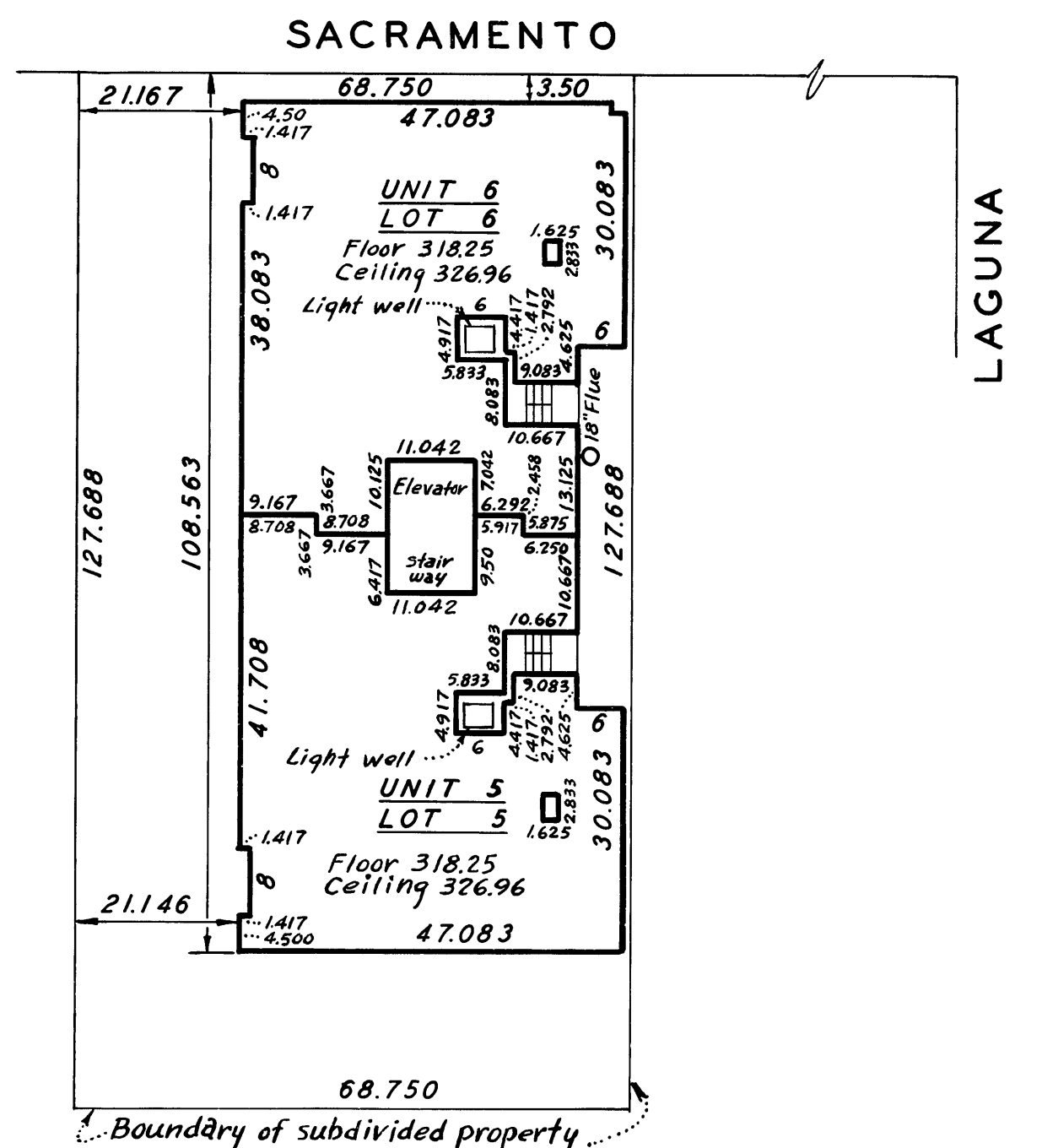
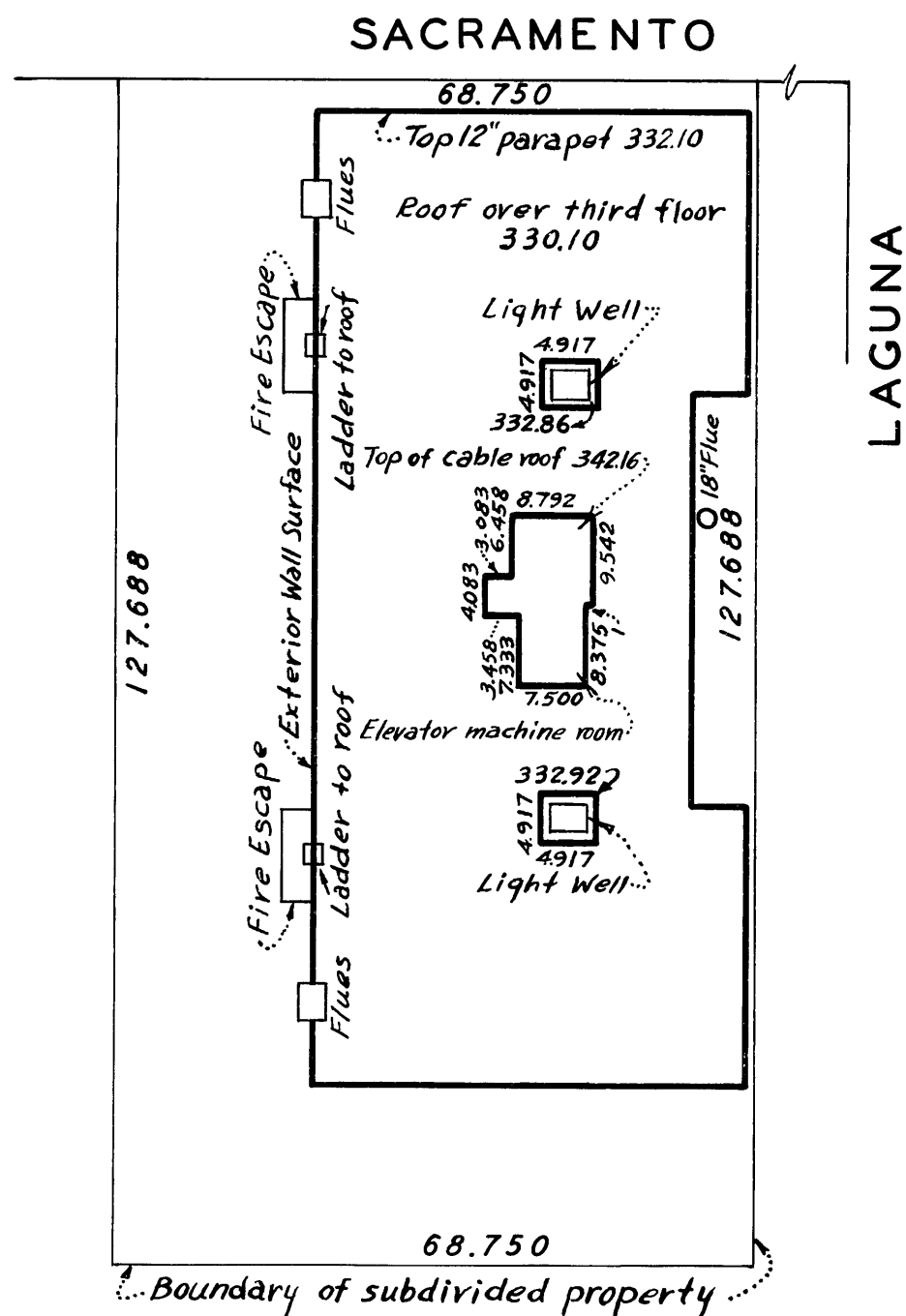
SECOND FLOOR
SCALE: 1" = 20'-0"

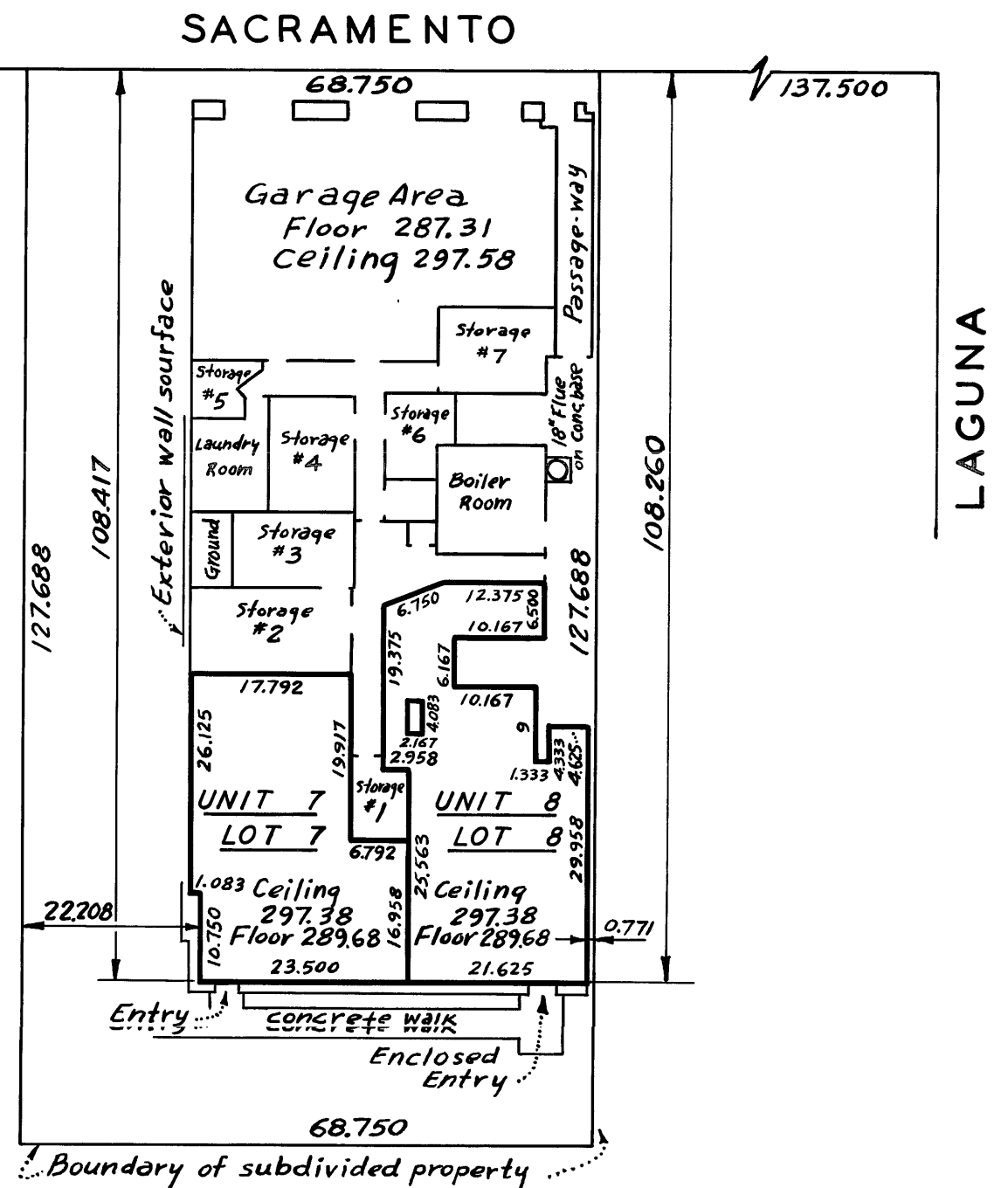
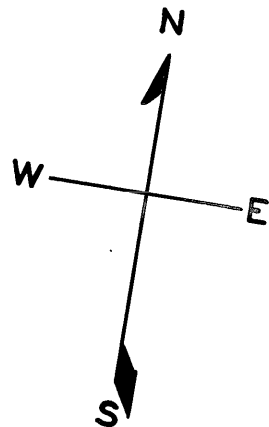


FIRST FLOOR
SCALE: 1" = 20'-0"



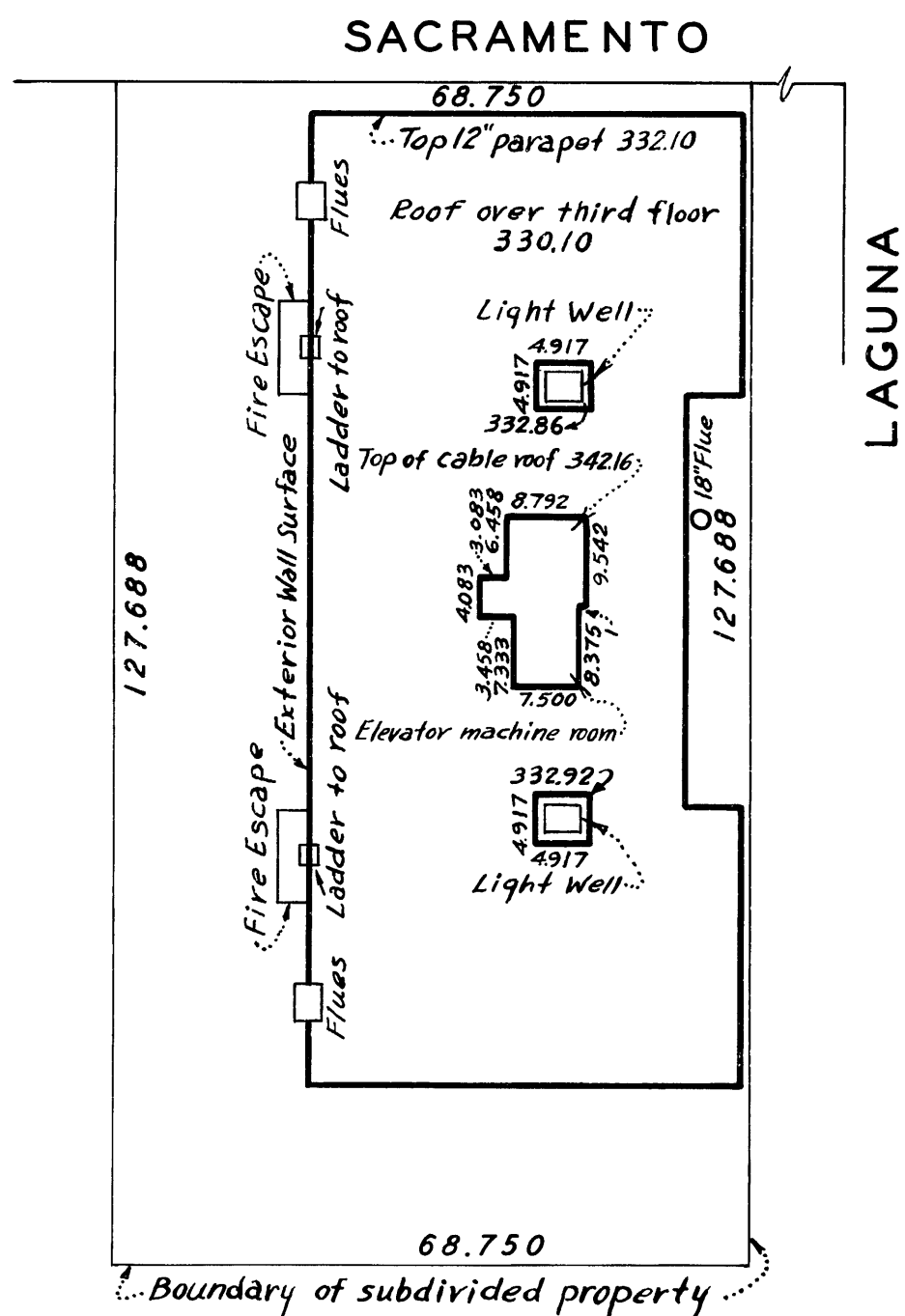
Notes:
The entire roof, facilities, improvements
and structures are "Common Area"
Elevations are shown hereon.



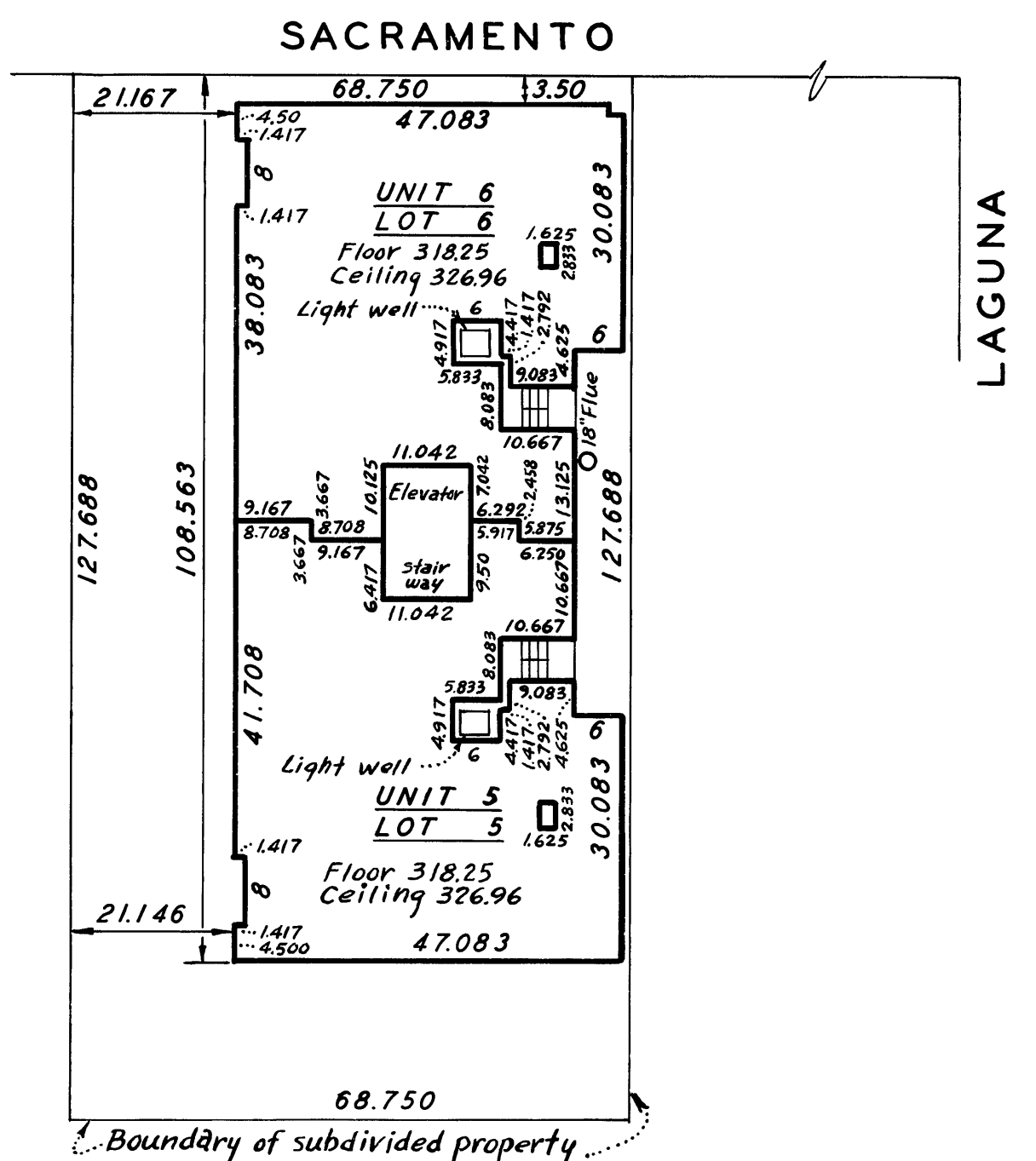


GROUND FLOOR
SCALE: 1" = 20'-0"

Notes:
The entire roof, facilities, improvements
and structures are "Common Area"
Elevations are shown hereon.



ROOF
SCALE: 1" = 20'-0"



THIRD FLOOR
SCALE: 1" = 20'-0"