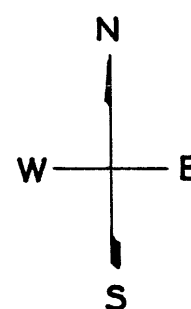


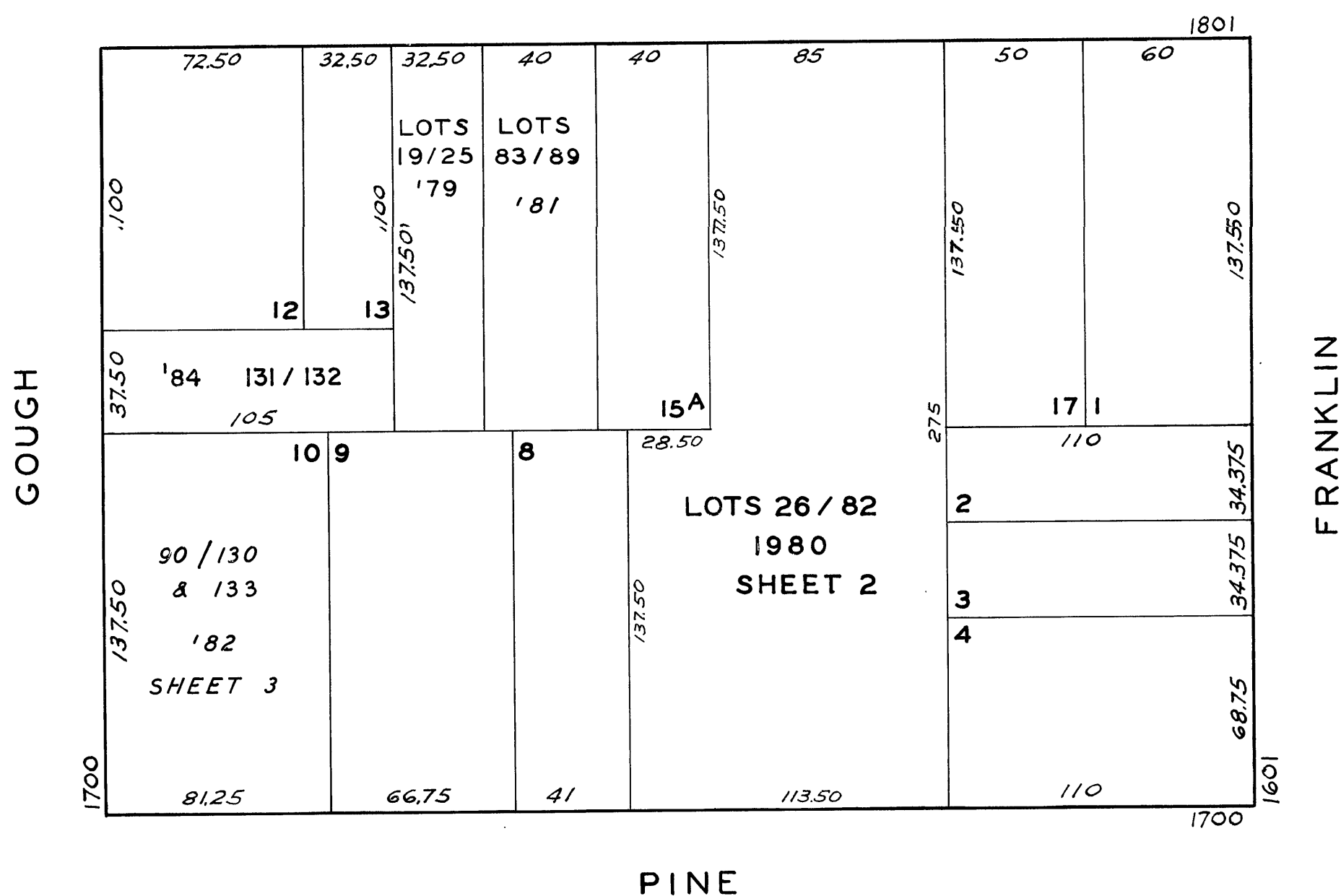
REVISED '61
" '79
" '80
" '81
" '82
" '84

1865 CALIFORNIA ST.

<u>A CONDOMINIUM</u>		
<u>LOT NO.</u>	<u>UNIT NO.</u>	<u>% COMMON AREA</u>
83	1	6.775
84	2	6.442
85	3	16.386
86	4	18.812
87	5	16.386
88	6	18.812
89	7	16.386



CALIFORNIA



1869 CALIFORNIA

<u>A CONDOMINIUM</u>		
<u>LOT</u> <u>NO.</u>	<u>UNIT</u> <u>NO.</u>	<u>% COMMON</u> <u>AREA</u>
19	1	1 / 7
20	2	1 / 7
21	3	1 / 7
22	4	1 / 7
23	5	1 / 7
24	6	1 / 7
25	7	1 / 7

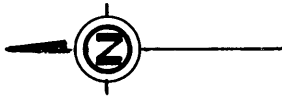
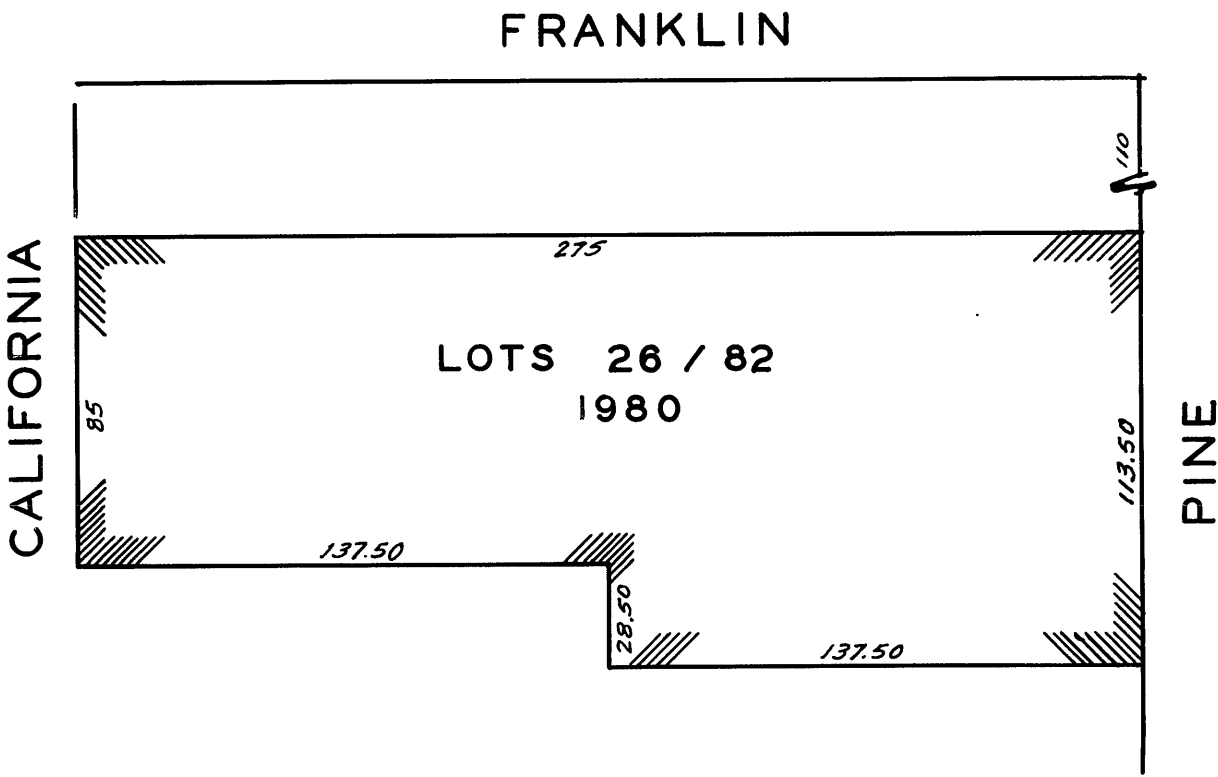
1734-1736 GOUGH ST.

<u>A CONDOMINIUM</u>		
<u>LOT</u> <u>NO.</u>	<u>UNIT</u> <u>NO.</u>	<u>% COMMON</u> <u>AREA</u>
131	1734	57.22
132	1736	42.78

THE PALM ROYAL

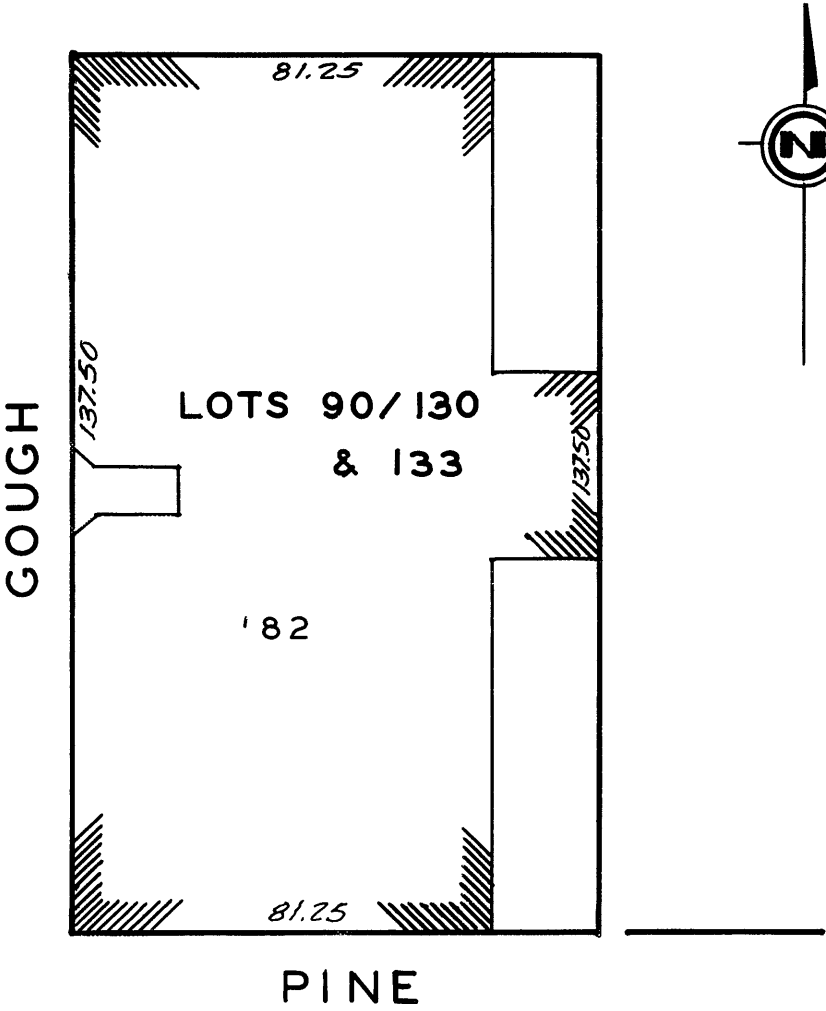
A CONDOMINIUM

LOT NO.	UNIT NO.	% COMMON AREA	LOT NO.	UNIT NO.	% COMMON AREA
26	1A	2.045	60	204	1.897
27	1C	2.045	61	205	1.434
28	1E	2.045	62	206	1.438
29	1H	2.045	63	207	1.489
30	1K	2.045	64	208	1.489
31	1M	1.426	65	209	1.888
32	1P	1.426	66	210	1.434
33	101	2.148	67	211	1.489
34	102	1.897	68	212	1.489
35	103	2.115	69	3M	1.426
36	104	1.897	70	3P	1.426
37	105	1.434	71	301	2.148
38	106	1.434	72	302	1.897
39	107	1.489	73	303	2.148
40	108	1.489	74	304	1.897
41	109	1.434	75	305	1.434
42	110	1.434	76	306	1.438
43	111	1.489	77	307	1.489
44	112	1.469	78	308	1.489
45	2A	2.101	79	309	1.888
46	2B	2.101	80	310	1.434
47	2C	2.101	81	311	1.489
48	2D	2.101	82	312	1.489
49	2E	2.101			
50	2F	2.101			
51	2H	2.101			
52	2J	2.101			
53	2K	2.101			
54	2L	2.101			
55	2M	1.426			
56	2P	1.426			
57	201	2.148			
58	202	1.897			
59	203	2.148			



1700 GOUGH STREET
A CONDOMINIUM

PARKING SPACE			PARKING SPACE				
LOT NO.	UNIT NO.	% COMMON AREA	LOT NO.	UNIT NO.	% COMMON AREA	LOT NO.	EXTRA PARKING SPACES
90	1	2.117	111	22	2.568	133	P-42, P-43, P-44, P-45, P-46, P-47
91	2	2.338	112	23	2.319		
92	3	2.338	113	24	1.770		
93	4	2.288	114	25	2.319		
94	5	2.437	115	26	2.598		
95	6	2.204	116	27	2.598		
96	7	1.675	117	28	2.277		
97	8	P-8 1.675	118	29	1.675		
98	9	2.277	119	30	3.357		
99	10	2.568	120	31	3.411		
100	11	2.568	121	32	P-32 3.411		
101	12	P-12 2.319	122	33	3.239		
102	13	1.770	123	34	0.886		
103	14	2.066	124	35	2.319		
104	15	2.598	125	36	2.598		
105	16	2.598	126	37	3.374		
106	17	2.277	127	38	P-38 3.369		
107	18	1.675	128	39	2.587		
108	19	1.675	129	40	3.643		
109	20	2.277	130	41	3.374		
110	21	P-21 2.568					



RECORDED 6/26/81
CONDO BOOK '18' Pgs-1/5