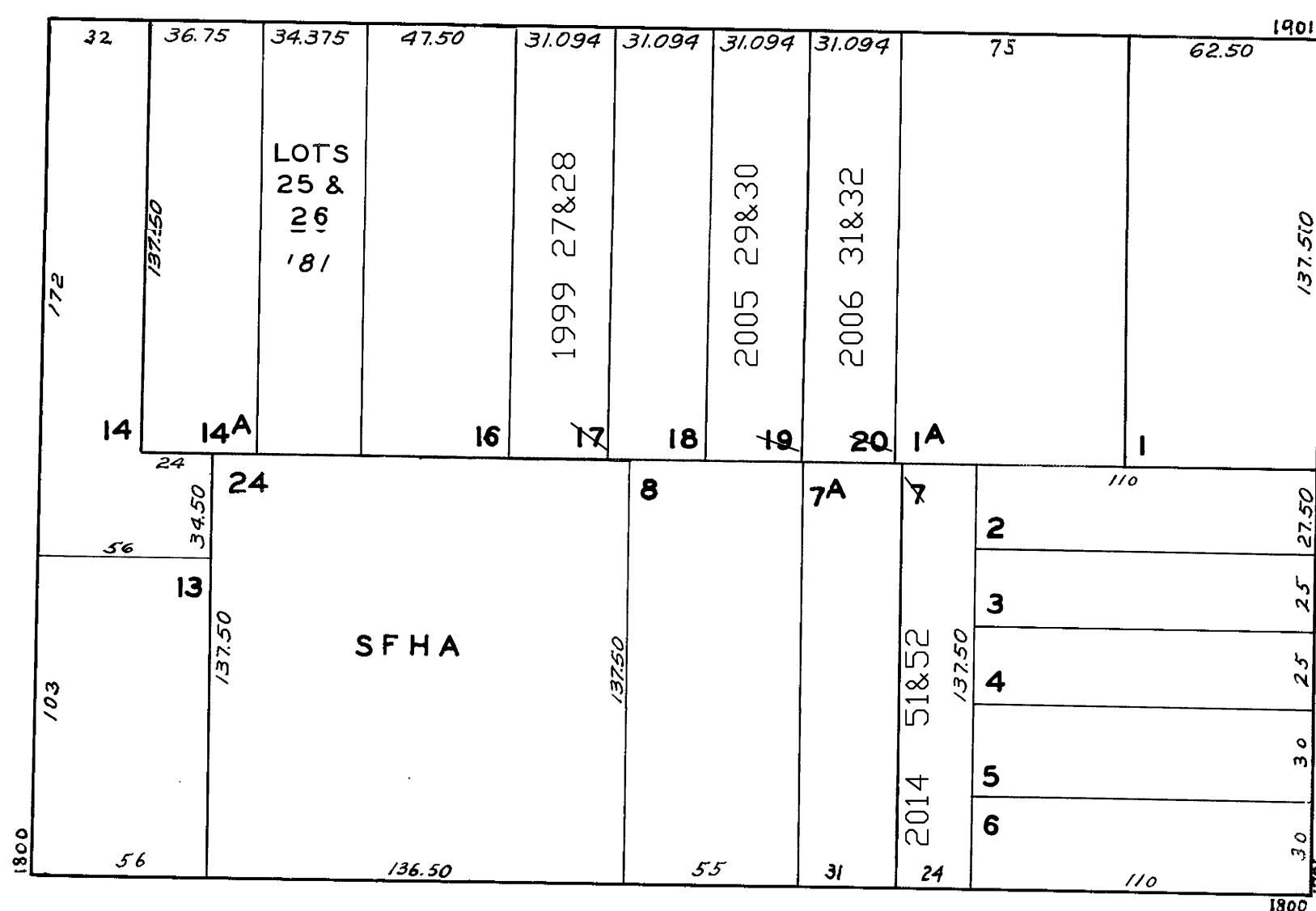


REVISED '63
" '71
" '81
Revised 1999
Revised 2005
Revised 2006
Revised 2014

1981-1983 CALIFORNIA ST.

OCTAVIA



GOUGH

1943-1945 CALIFORNIA ST.

1956-1961 CALIFORNIA ST.

1933-1935 CALIFORNIA ST.
A CONDOMINIUM

A CONDOMINIUM		
LOT	UNIT	% COMM. AREA
31	1933	44
32	1935	56