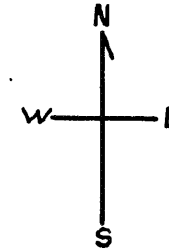


LOTS MERGED
Lots Into Lot
3-to-8 - 3 - 1944
4 Restored 1948

REVISED 1984
" '96
Revised 1998
Revised 1997
Revised 2005

© COPYRIGHT SAN FRANCISCO
CITY & COUNTY ASSESSOR 1995

lot14 into lots18to20 for 1997 roll
lot15 into lots21to23 for 1997 roll
lot13 into lots24to26 for 1997 roll
lot16 into lots27to30 for 1998 roll
lot17 into lots31to33 for 1998 roll
lot4 into lots34to36 for 2005 roll



BUSH

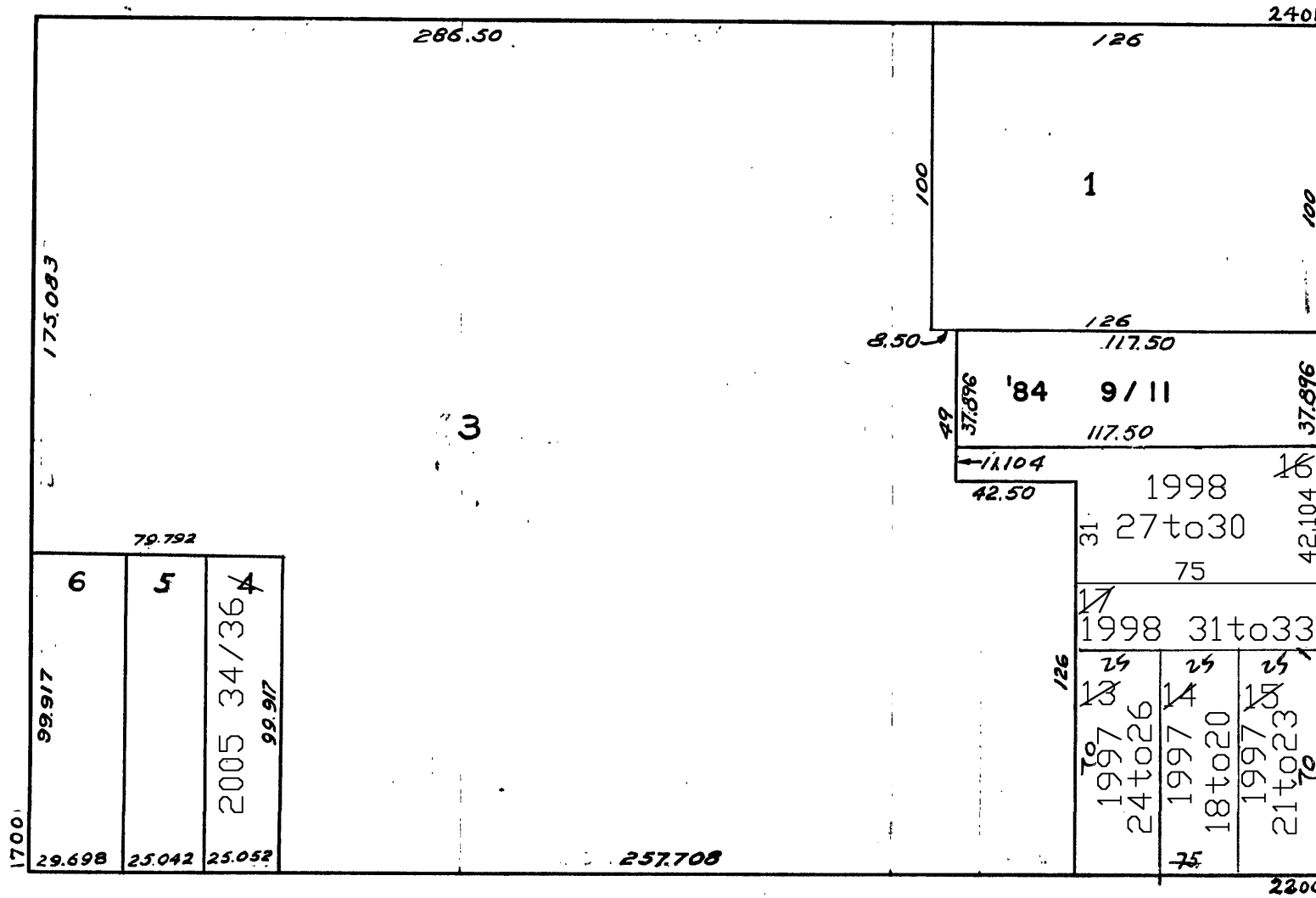
SCOTT

PIERCE

SUTTER

2280 SUTTER ST.
A CONDOMINIUM

LOT	UNIT	% COMM. AREA
34	1	30.56
35	2	30.51
36	3	38.93



lot line ADJUSTMENT
lot 2 INTO lots 12/15
© PENDING
lot 12 & 13 INTO 16 & 17
lot 13 " 29/26
lot 14 " 18/20
lot 15 " 21/23

2202 SUTTER ST.
A CONDOMINIUM

LOT	UNIT	% COMM. AREA
18	1	34.02
19	2	32.99
20	3	32.99

2208 SUTTER ST.
A CONDOMINIUM

LOT	UNIT	% COMM. AREA
24	1	34.06
25	2	32.99
26	3	32.99

1715 PIERCE ST.
A CONDOMINIUM

LOT	UNIT	% COMM. AREA
31	1	33.84
32	2	33.08
33	3	33.08

2200 SUTTER ST.
A CONDOMINIUM

LOT	UNIT	% COMM. AREA
21	1	33.33
22	2	33.33
23	3	33.34

1725-1729 PIERCE ST.
A CONDOMINIUM

LOT	UNIT	% COMM. AREA
27	1729	25.2
28	1	25.28
29	2	24.76
30	3	24.76

1735-1737-1739 PIERCE ST.
A CONDOMINIUM

LOT NO.	UNIT NO.	% COMMON AREA
9	1735	33.333
10	1737	33.333
11	1739	33.334

2280 SUTTER ST.
A CONDOMINIUM

LOT	UNIT	% COMM. AREA
34	1	30.56
35	2	30.51
36	3	38.93