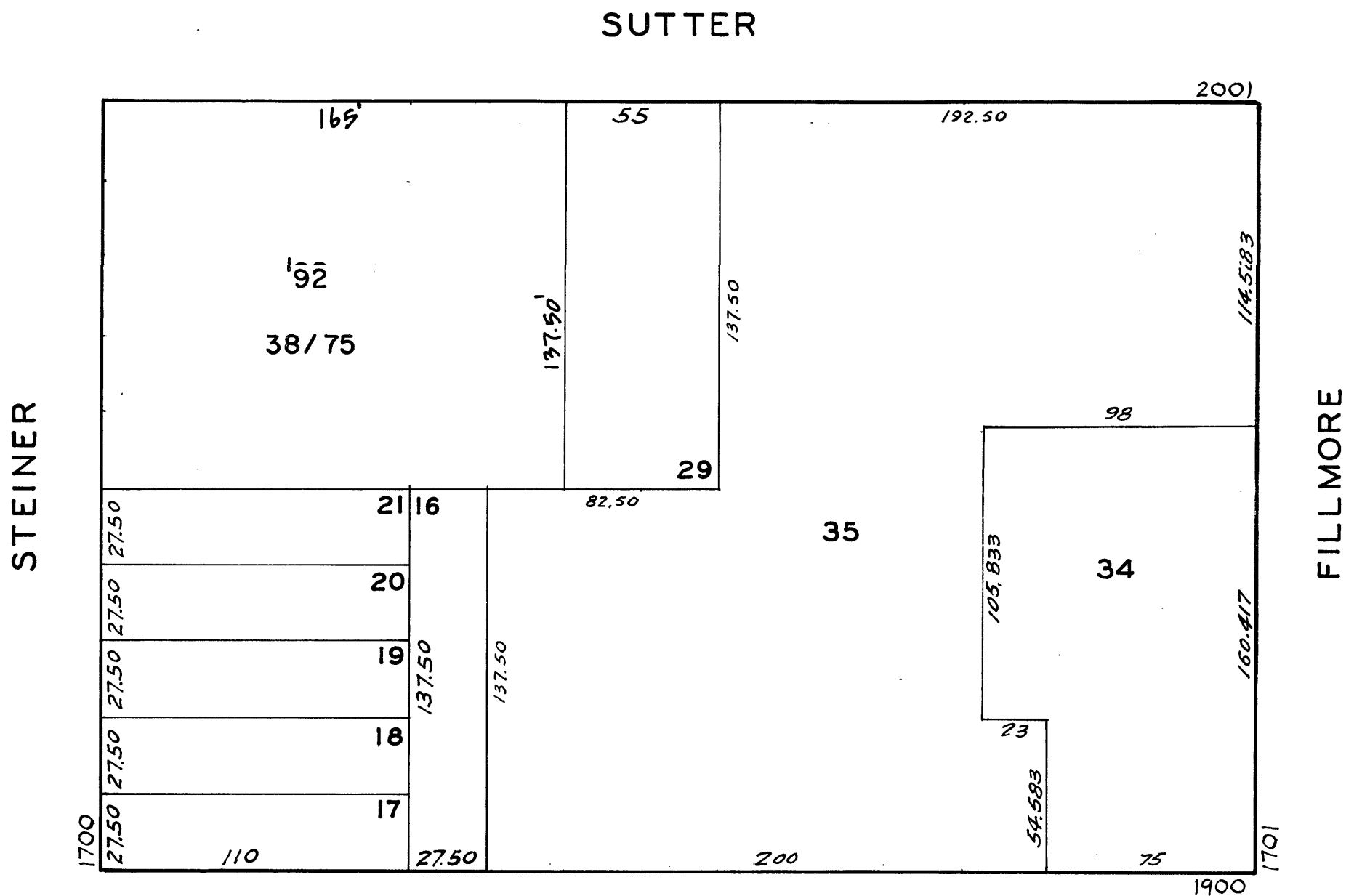
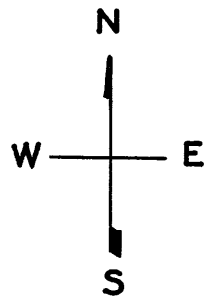


Lots 5/9 merged into lot 4 - 1944  
 Lot 30 " " " 29 - "  
 Lots 32/33 " " " 31 - "  
 LOTS 36 & 37 SHOULD BE CREATED FOR '84 ROLL (REVISED '90)

© COPYRIGHT SAN FRANCISCO  
 CITY & COUNTY ASSESSOR 1995

683  
 WA BLK 357  
 REVISED 1959  
 " 1973  
 " '77  
 " '84  
 " '90  
 " '92



WESTWOOD CONDOMINIUM  
 2075 SUTTER ST.  
 A CONDOMINIUM

LOT	UNIT	LOT	UNIT
38	201	57	501
39	203	58	503
40	205	59	505
41	207	60	507
42	209	61	509
43	211	62	511
44	213	63	513
45	215	64	515
46	219	65	417
47	221	66	419
48	223	67	521
49	225	68	523
50	227	69	525
51	229	70	527
52	231	71	529
53	233	72	531
54	235	73	535
55	317	74	517
56	319	75	519

NOTE: EACH OWNER OWNS 1/38 COMM. AREA