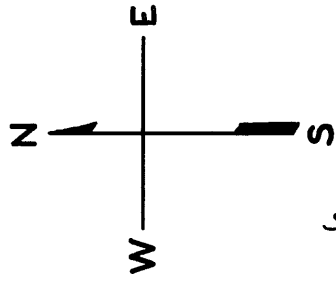


711

© COPYRIGHT SAN FRANCISCO
CITY & COUNTY ASSESSOR 1995



SCALE: 1"=60'

W.A. BLKS. 154-155 - 202 - 203

W.A. REDEV. AREA A-1

REVISED '63
REVISED '64

" '67

" '68

" '70

" '74

REVISED '79

GOUGH

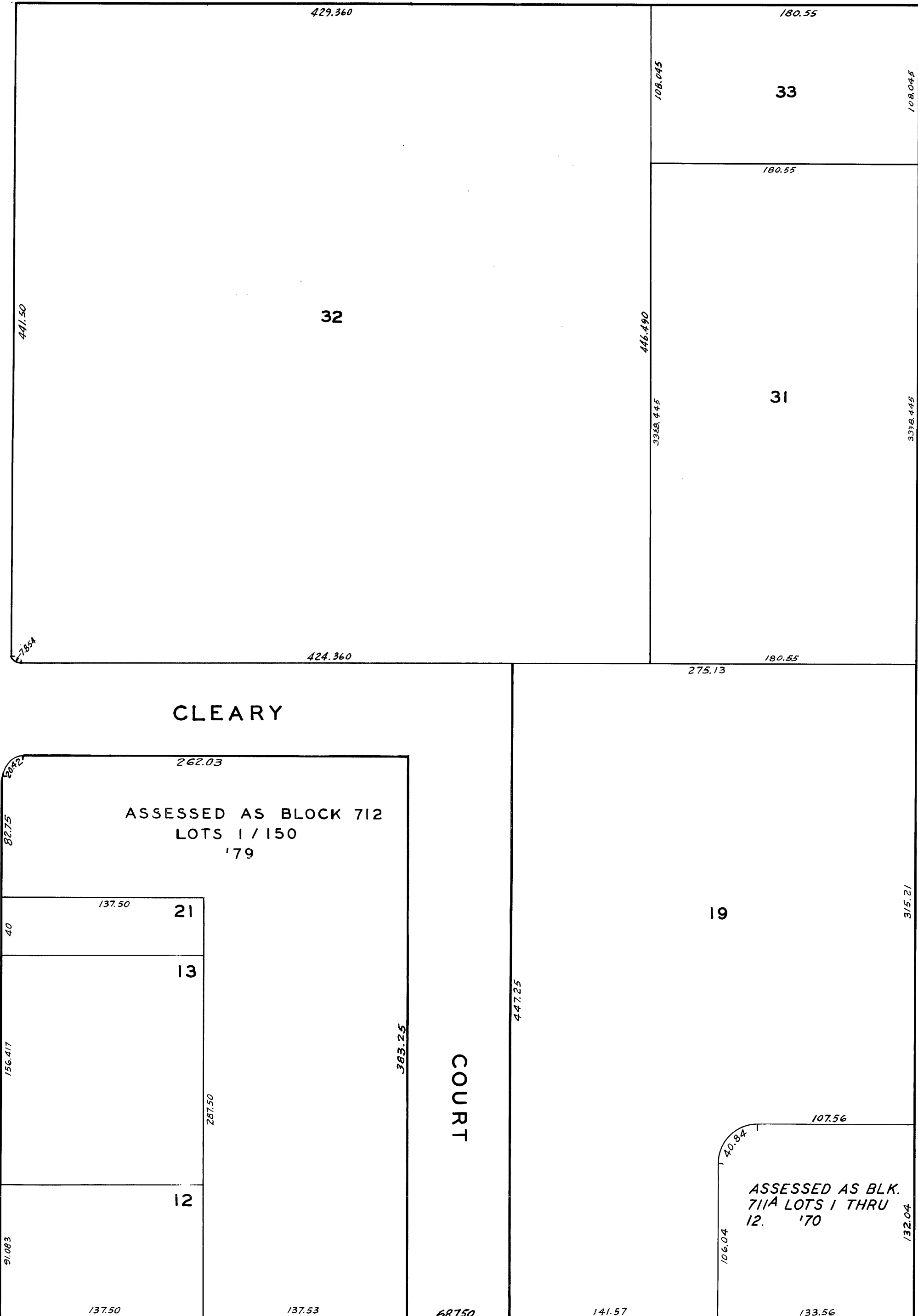
ST.

BLVD.

GEARY

ST.

ELLIS



LAGUNA

ST.

1280 ELLIS STREET APARTMENTS

A CONDOMINIUM

<u>LOT NO.</u>	<u>UNIT NO.</u>	<u>PERCENT INTEREST OF COMMON AREA</u>
1	1	8.333
2	2	8.333
3	3	8.333
4	4	8.333
5	5	8.333
6	6	8.333
7	7	8.333
8	8	8.333
9	9	8.333
10	10	8.333
11	11	8.333
12	12	8.333

NOTE
EACH UNIT SHALL OWN
AN UNDIVIDED 1/12TH INT-
EREST IN THE COMMON
AREA.

