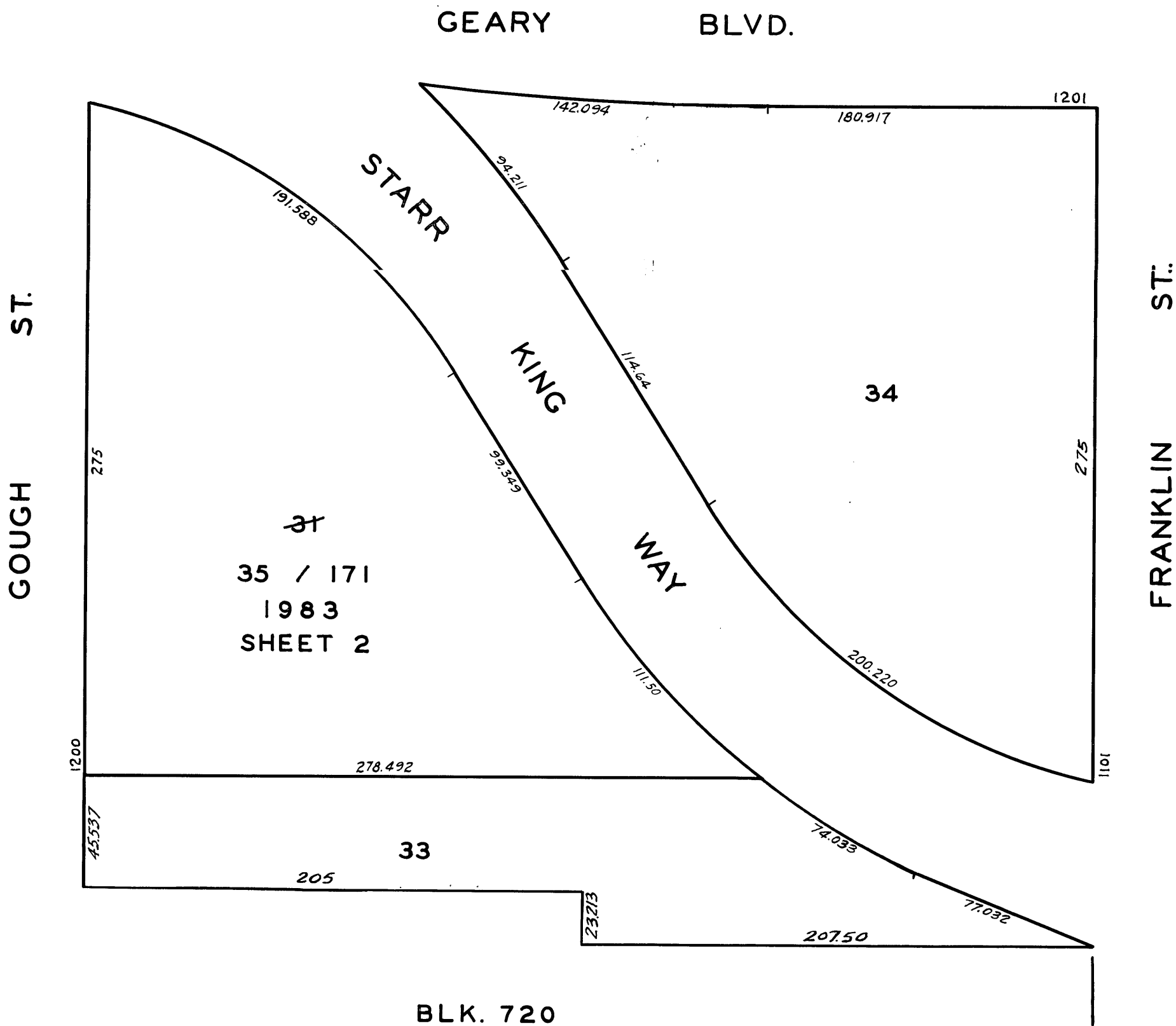
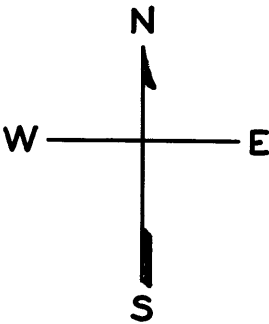


REVISED	'63
~	'64
"	'67
"	'83



CATHEDRAL HILL TOWER
A CONDOMINIUM - 1200 GOUGH ST.

LOT NO	UNIT NO	Percentage Of OWNERSHIP
	L-1	Common Area
	L-2	Common Area
	L-3	Common Area
	L-4	Common Area
	M-1	Common Area
	M-2	Common Area
	M-3	Common Area
	M-4	Common Area
35	2-A	1.08505 %
36	2-B	0.40512 %
37	2-C	0.70748 %
38	2-D	0.74546 %
39	2-E	0.73205 %
40	2-F	0.70450 %
41	3-A	1.08505 %
42	3-B	0.40512 %
43	3-C	0.70748 %
44	3-D	0.74546 %
	3-E	Common Area
45	3-F	0.70450 %
46	4-A	1.08505 %
47	4-B	0.40512 %
48	4-C	0.70748 %
49	4-D	0.74546 %
50	4-E	0.73205 %
51	4-F	0.70450 %
52	5-A	1.08505 %
53	5-B	0.40512 %
54	5-C	0.70748 %
55	5-D	0.74546 %
56	5-E	0.73205 %
57	5-F	0.70450 %
58	6-A	1.08505 %
59	6-B	0.40512 %
60	6-C	0.70748 %
61	6-D	0.74546 %
62	6-E	0.73205 %
63	6-F	0.70450 %
64	7-A	1.08505 %
65	7-B	0.40512 %
66	7-C	0.70748 %
67	7-D	0.74546 %
68	7-E	0.73205 %
69	7-F	0.70450 %
70	8-A	1.08505 %
71	8-B	0.40512 %
72	8-C	0.70748 %
73	8-D	0.74546 %
74	8-E	0.73205 %
75	8-F	0.70450 %

LOT NO	UNIT NO	Percentage Of OWNERSHIP
76	9-A	1.08505 %
77	9-B	0.40512 %
78	9-C	0.70748 %
79	9-D	0.74546 %
80	9-E	0.73205 %
81	9-F	0.70450 %
82	10-A	1.08505 %
83	10-B	0.40512 %
84	10-C	0.70748 %
85	10-D	0.74546 %
86	10-E	0.73205 %
87	10-F	0.70450 %
88	11-A	1.08505 %
89	11-B	0.40512 %
90	11-C	0.70748 %
91	11-D	0.74546 %
92	11-E	0.73205 %
93	11-F	0.70450 %
94	12-A	1.08505 %
95	12-B	0.40512 %
96	12-C	0.70748 %
97	12-D	0.74546 %
98	12-E	0.73205 %
99	12-F	0.70449 %
100	13-A	1.08505 %
101	13-B	0.40512 %
102	13-C	0.70748 %
103	13-D	0.74546 %
104	13-E	0.73205 %
105	13-F	0.70449 %
106	14-A	1.08505 %
107	14-B	0.40512 %
108	14-C	0.70748 %
109	14-D	0.74546 %
110	14-E	0.73205 %
111	14-F	0.70449 %
112	15-A	1.08505 %
113	15-B	0.40512 %
114	15-C	0.70748 %
115	15-D	0.74546 %
116	15-E	0.73205 %
117	15-F	0.70449 %
118	16-A	1.08505 %
119	16-B	0.40512 %
120	16-C	0.70748 %
121	16-D	0.74546 %
122	16-E	0.73205 %
123	16-F	0.70449 %

LOT NO	UNIT NO	Percentage Of OWNERSHIP
124	17-A	1.08505 %
125	17-B	0.40512 %
126	17-C	0.70748 %
127	17-D	0.74546 %
128	17-E	0.73205 %
129	17-F	0.70449 %
130	18-A	1.08505 %
131	18-B	0.40512 %
132	18-C	0.70748 %
133	18-D	0.74546 %
134	18-E	0.73205 %
135	18-F	0.70449 %
136	19-A	1.08505 %
137	19-B	0.40512 %
138	19-C	0.70748 %
139	19-D	0.74546 %
140	19-E	0.73205 %
141	19-F	0.70449 %
142	20-A	1.08505 %
143	20-B	0.40512 %
144	20-C	0.70748 %
145	20-D	0.74546 %
146	20-E	0.73205 %
147	20-F	0.70449 %
148	21-A	1.08505 %
149	21-B	0.40512 %
150	21-C	0.70748 %
151	21-D	0.74546 %
152	21-E	0.73205 %
153	21-F	0.70449 %
154	22-A	1.08505 %
155	22-B	0.40512 %
156	22-C	0.70748 %
157	22-D	0.74546 %
158	22-E	0.73205 %
159	22-F	0.70449 %
160	23-A	1.08505 %
161	23-B	0.40512 %
162	23-C	0.70748 %
163	23-D	0.74546 %
164	23-E	0.73205 %
165	23-F	0.70449 %
166	24-A	1.08505 %
167	24-B	0.40512 %
168	24-C	0.70748 %
169	24-D	0.74546 %
170	24-E	0.73205 %
171	24-F	0.70449 %

REVISED	'63
≈	'64
"	'67
"	'83

