

W A BLK. 80

REVISED '60

REVISED '61

REVISED '62

" '77

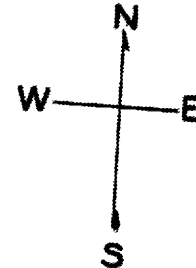
" '81

" '84

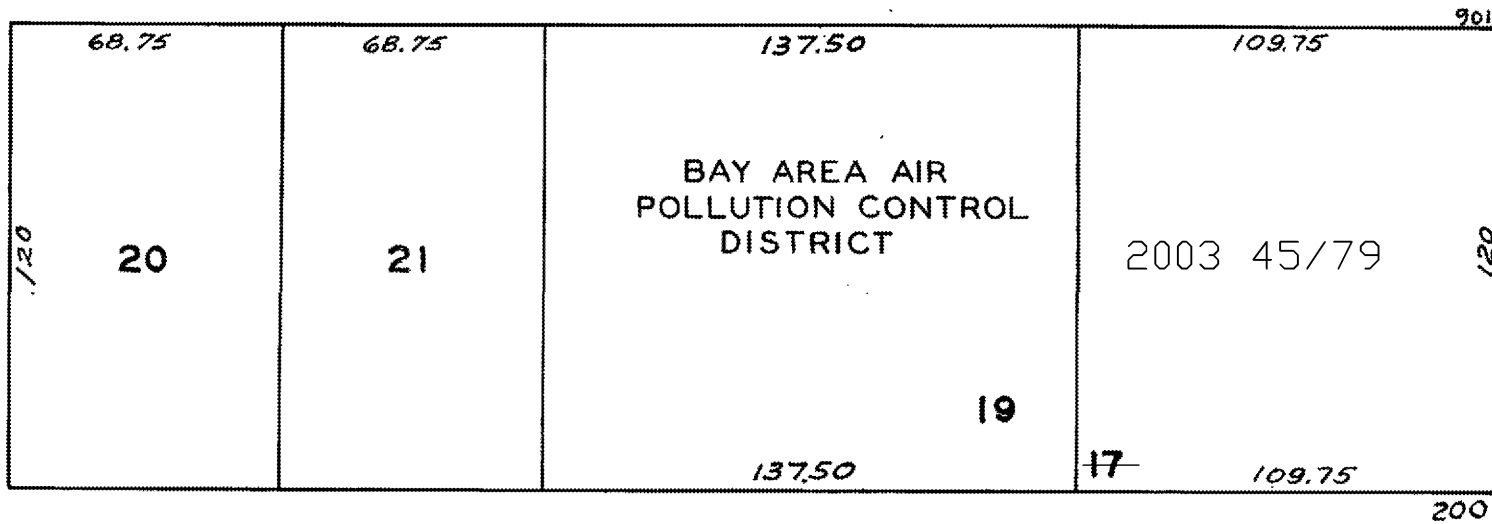
Revised 2003

344 Info 22/44 1984

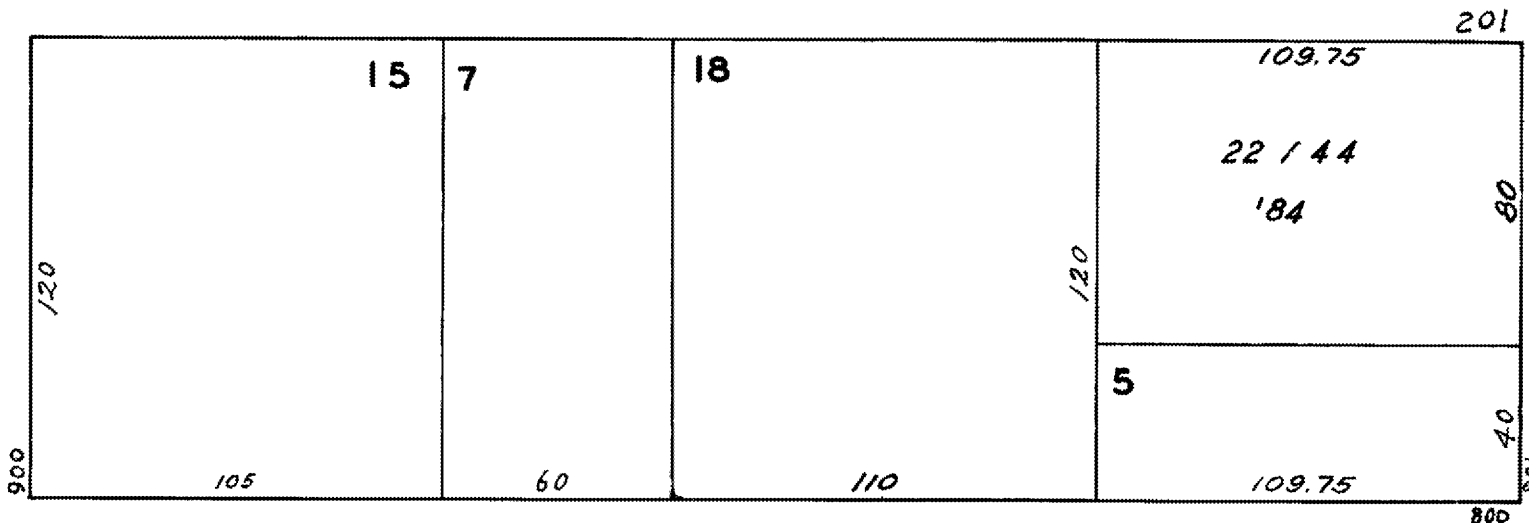
lot17 into lots45to49 for 2003 roll



ELLIS



WILLOW



EDDY

851 Van Ness Ave.

A CONDOMINIUM

LOT	UNIT	% COMM. AREA
45	1	3.88
46	2	3.70
47	3	7.71
48	100	2.57
49	101	2.59
50	102	2.20
51	103	2.23
52	104	3.02
53	105	3.02
54	106	2.24
55	107	2.62
56	108	3.05
57	200	2.57
58	201	2.59
59	202	2.20
60	203	2.23
61	206	2.24
62	207	2.62
63	208	3.05
64	300	2.57
65	301	2.59
66	302	2.20
67	303	2.23
68	306	2.24
69	307	2.62
70	308	3.05
71	400	3.07
72	401	3.08
73	402	2.02
74	403	2.23
75	404	3.38
76	405	3.38
77	406	2.24
78	407	3.05
79	408	3.54

VAN NESS AVE.

ONE FLYNN CENTER  
A COMMERCIAL CONDOMINIUM

LOT	UNIT	COMM. AREA
22	101	12.0
23	102	6.7
24	201	3.3
25	202	4.7
26	203	4.3
27	204	3.8
28	301	3.3
29	302	4.7
30	303	4.3
31	304	4.0
32	401	3.3
33	402	4.7
34	403	4.3
35	404	4.0
36	501	3.3
37	502	4.7
38	503	4.3
39	504	4.0
40	601	3.3
41	602	4.7
42	603	4.0
43	604	4.0

44 AIRSPACE FOR FUTURE  
DEVELOPMENT