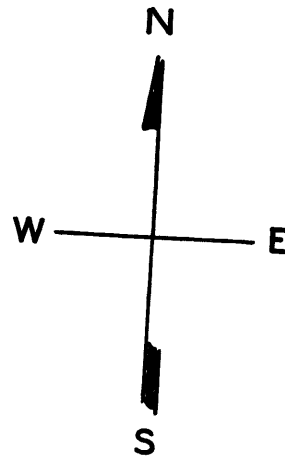


REVISED 1959
" 1976
" 1981

© COPYRIGHT SAN FRANCISCO
CITY & COUNTY ASSESSOR 1995

SHEET NO. I **762**
WESTERN ADDN. BLOCK NO. 78

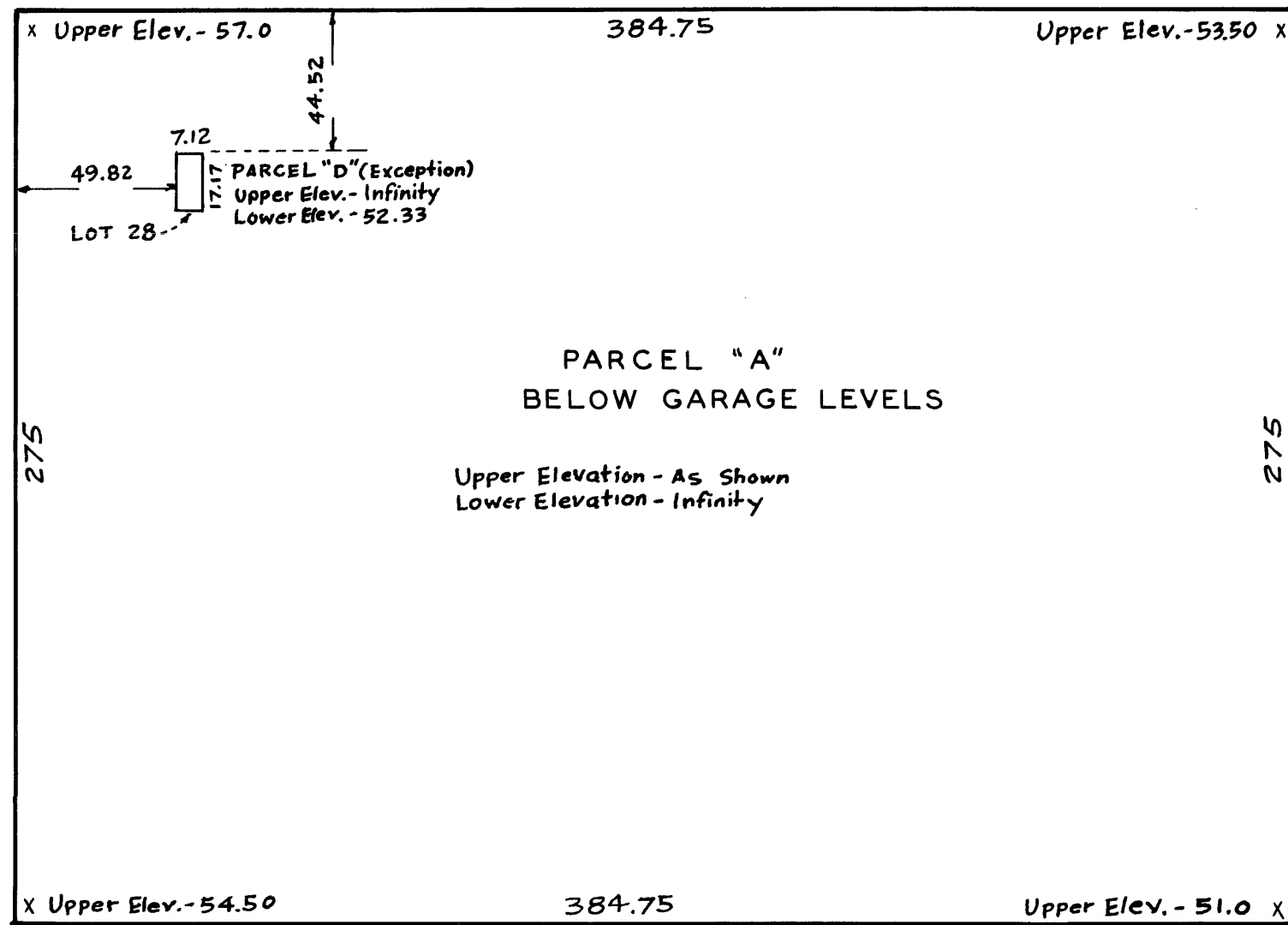
REVISED 1982



TURK ST.

FRANKLIN ST.

VAN NESS AVE.

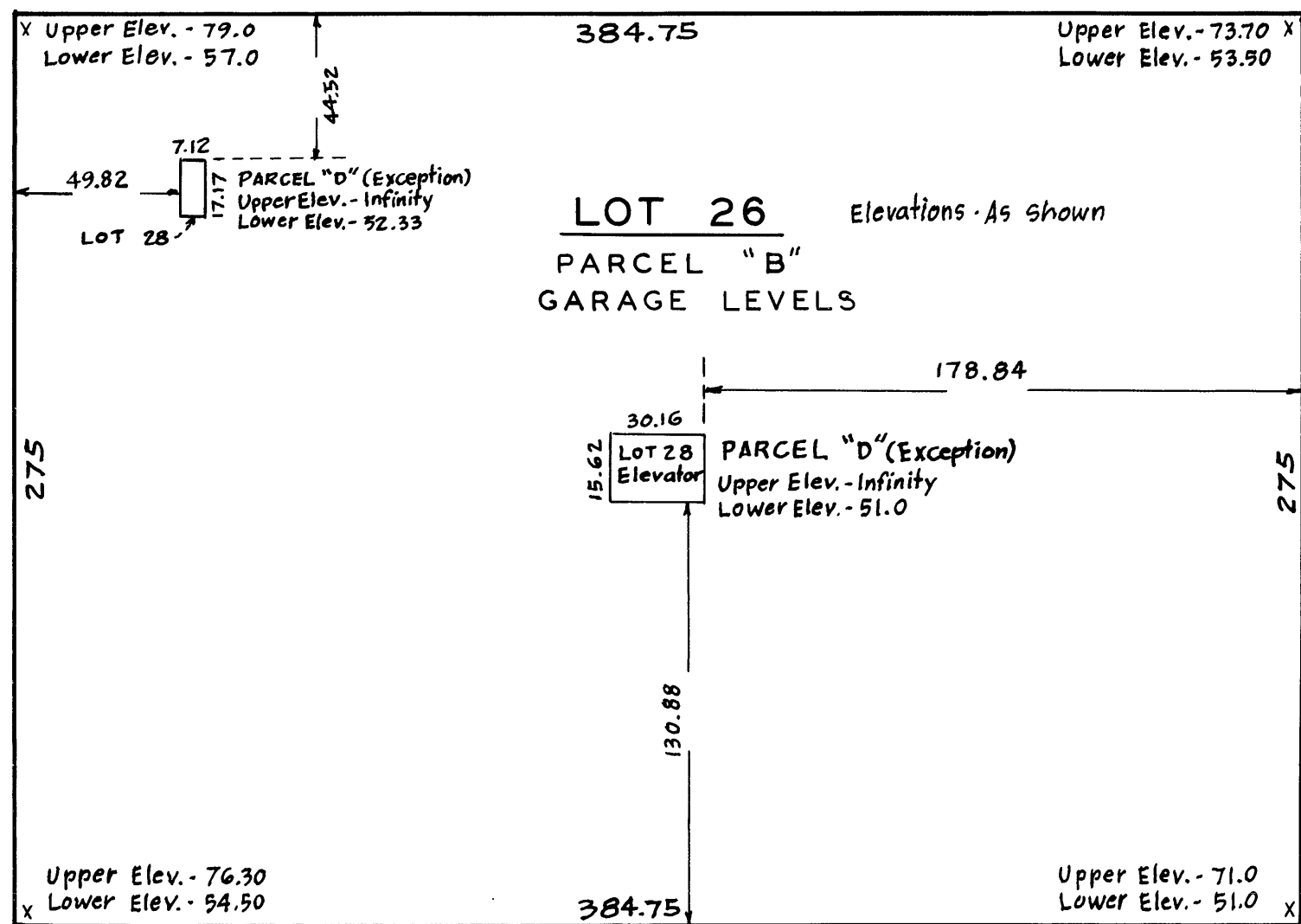


GOLDEN GATE AVE.

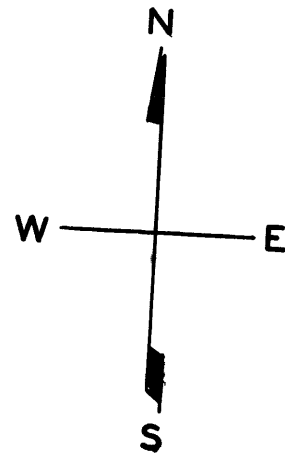
TURK ST.

FRANKLIN ST.

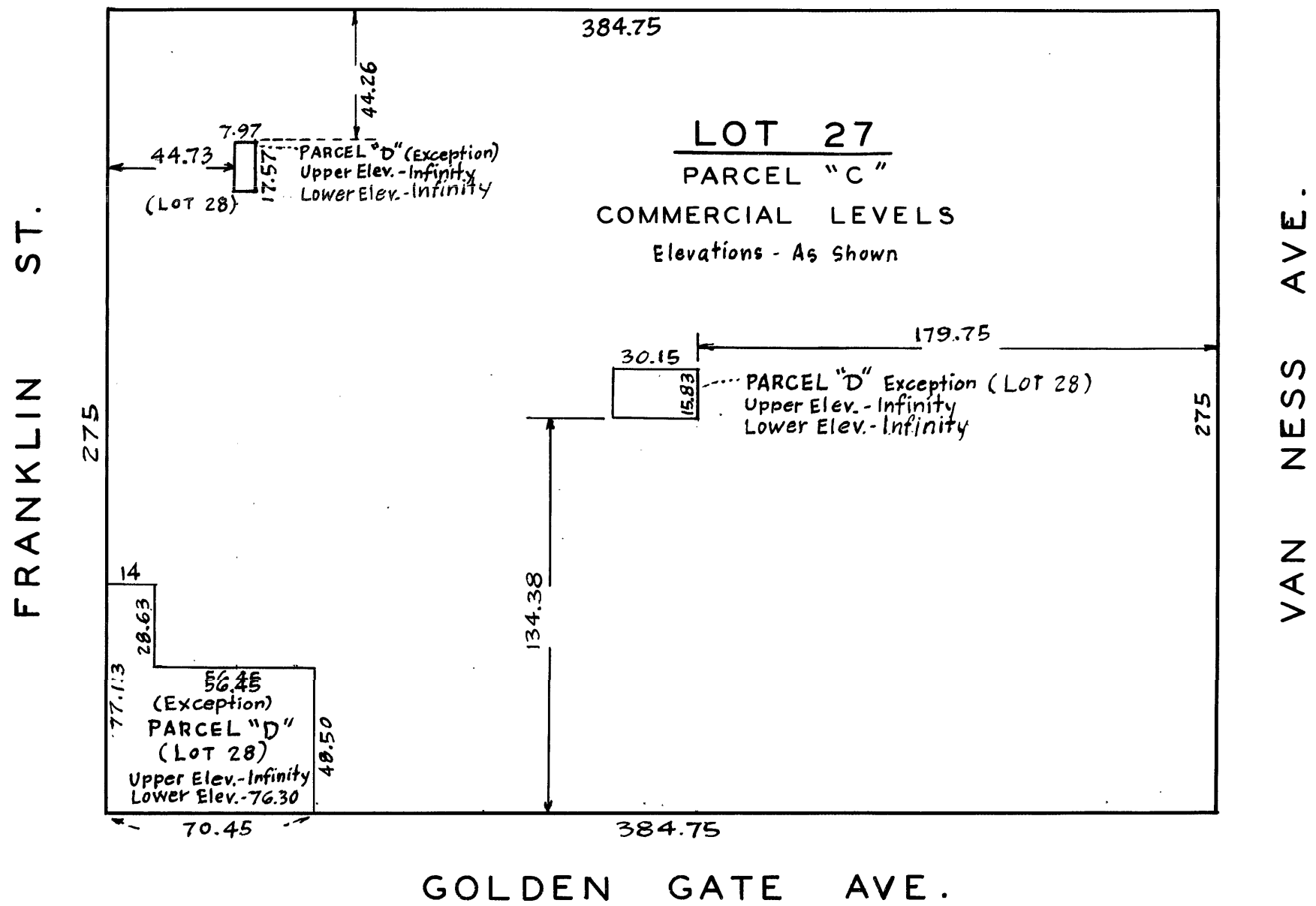
VAN NESS AVE.



GOLDEN GATE AVE.

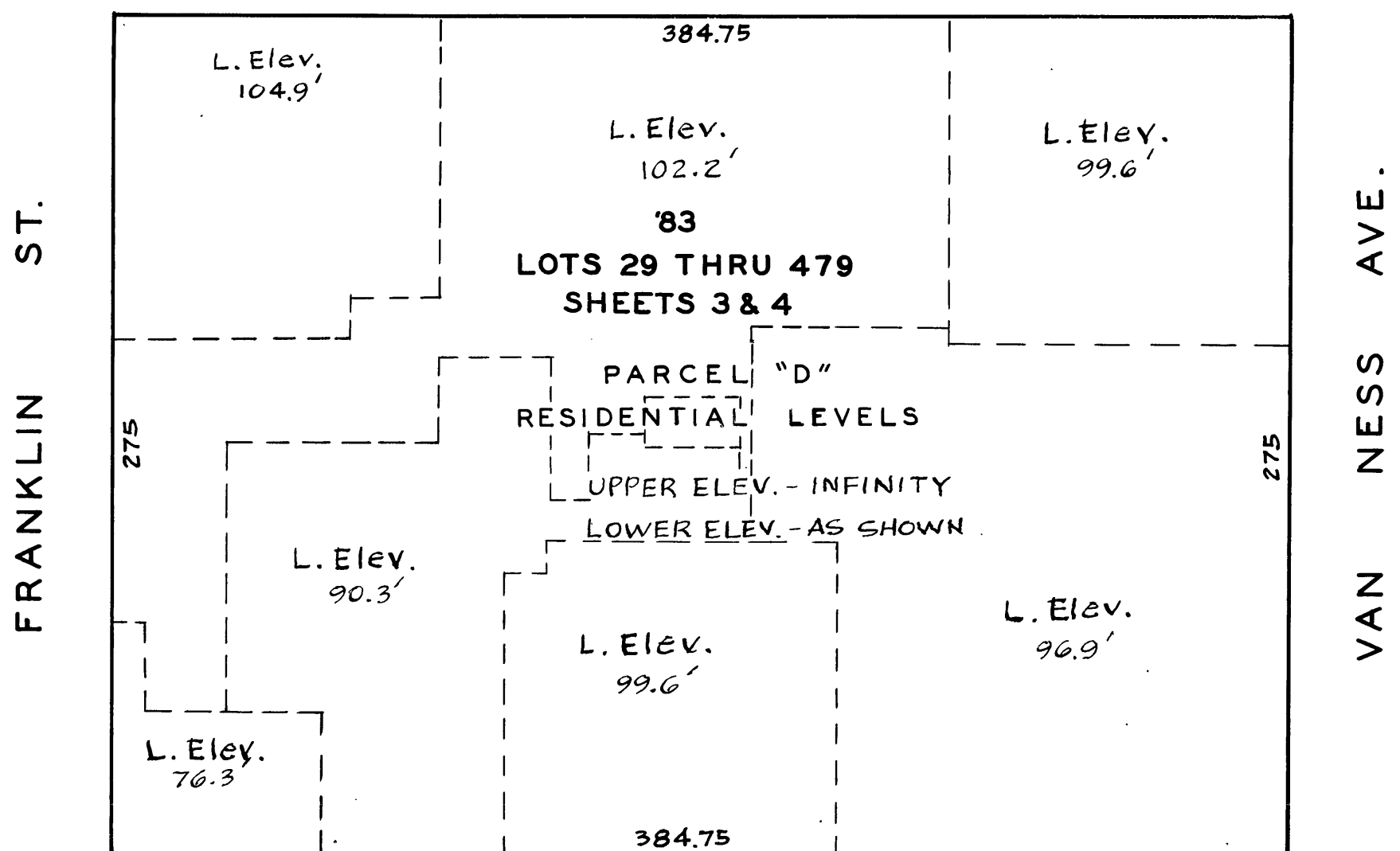


TURK ST.



GOLDEN GATE AVE.

TURK ST.



GOLDEN GATE AVE.

OPERA PLAZA RESIDENTIAL PARCEL

A CONDOMINIUM PROJECT

601 VAN NESS AVE.

762

SHEET 3

Lot	Unit	Ownership Percentage	Lot	Unit	Ownership Percentage	Lot	Unit	Ownership Percentage
84	1	.4215	52	52	.3453	208	208	.1356
85	2	.3162	53	53	.3251	209	209	.2002
86	3	.3173	54	54	.2798	210	210	.1953
87	4	.3162	55	55	.2798	211	211	.1610
88	5	.3173	56	56	.2798	212	212	.2037
89	6	.3162	57	57	.2798	221	221	.2094
90	7	.3173	58	58	.2798	222	222	.3173
91	8	.3162	59	59	.2798	224	224	.2406
92	9	.3173	60	60	.2798	225	225	.2544
93	10	.4215	61	61	.3811	226	226	.2074
94	11	.3684	62	62	.3710	227	227	.1405
95	12	.2948	63	63	.2819	228	228	.1356
96	14	.2948	64	64	.2819	229	229	.2002
97	15	.2948	65	65	.2819	230	230	.1953
98	16	.2948	66	66	.2819	231	231	.1610
99	17	.2948	67	67	.2819	232	232	.1967
100	18	.2948	68	68	.3277	241	241	.2766
106	19	.2948	69	69	.3390	242	242	.1950
113	20	.4621	70	70	.2931	243	243	.2045
114	21	.4520	71	71	.2931	244	244	.2175
115	22	.2972	72	72	.2931	245	245	.2585
116	23	.2972	73	73	.2931	246	246	.2106
117	24	.2972	74	74	.3710	247	247	.1416
118	25	.2972	75	75	.3710	248	248	.1275
119	26	.2972	76	76	.2747	249	249	.2094
120	27	.4022	77	77	.2747	250	250	.1944
126	28	.4145	78	78	.2747	251	251	.2648
29	29	.3095	79	79	.2747	301	301	.2166
30	30	.3095	80	80	.2747	302	302	.3242
31	31	.3095	81	81	.2747	304	304	.2406
32	32	.3095	82	82	.2747	305	305	.2544
33	33	.4520	83	83	.3202	306	306	.2074
34	34	.4520	101	101	.2198	307	307	.1405
35	35	.2899	102	102	.1890	308	308	.1356
36	36	.2899	103	103	.1601	309	309	.2002
37	37	.2899	104	104	.1445	310	310	.1953
38	38	.2899	105	105	.3095	311	311	.1610
39	39	.2899	107	107	.1688	312	312	.2037
40	40	.2899	108	108	.1497	321	321	.2094
41	41	.2899	109	109	.2051	322	322	.3173
42	42	.3632	110	110	.1927	324	324	.2406
43	43	.3453	111	111	.1624	325	325	.2544
44	44	.2992	112	112	.2028	326	326	.2074
45	45	.2992	121	121	.2126	327	327	.1405
46	46	.2992	122	122	.1814	328	328	.1356
47	47	.2992	123	123	.1587	329	329	.2002
48	48	.2992	124	124	.1425	330	330	.1953
49	49	.2992	125	125	.3107	331	331	.1610
50	50	.2992	127	127	.1696	332	332	.1967
51	51	.2992	128	128	.1497	341	341	.2766
			129	129	.2031	342	342	.1950
			130	130	.1956	343	343	.2045
			131	131	.1581	344	344	.2175
			132	132	.2002	345	345	.2585
			141	141	.2565	346	346	.2106
			144	144	.1976	347	347	.1416
			145	145	.3110	348	348	.1275
			147	147	.1716	349	349	.2094
			148	148	.1520	350	350	.1944
			149	149	.2040	351	351	.2648
			150	150	.1953	401	401	.2166
			151	151	.4659	402	402	.3242
			201	201	.2166	404	404	.2406
			202	202	.3243	405	405	.2544
			204	204	.2406	406	406	.2074
			205	205	.2544	407	407	.1405
			206	206	.2074	408	408	.1356
			207	207	.1405			

OPERA PLAZA
RESIDENTIAL PARCEL

A CONDOMINIUM PROJECT

601 VAN NESS AVE.

762

SHEET 4

Lot	Unit	Ownership Percentage
409	409	.2002
410	410	.1953
411	411	.1610
412	412	.2037
421	421	.2094
422	422	.3173
424	424	.2406
425	425	.2544
426	426	.2074
427	427	.1405
428	428	.1356
429	429	.2002
430	430	.1953
431	431	.1610
432	432	.1967
441	441	.2766
442	442	.1950
443	443	.2045
444	444	.2175
445	445	.2585
446	446	.2106
447	447	.1416
448	448	.1275
449	449	.2094
450	450	.1944
451	451	.2648
133	501	.2161
134	502	.1950
135	503	.1950
136	504	.2146
137	505	.2547
138	506	.2074
139	507	.1639
140	508	.1353
142	509	.2037
143	510	.1939
146	511	.1604
152	512	.2040
153	521	.2091
154	522	.1881
155	523	.1950
156	524	.2146
157	525	.2547
158	526	.2074
159	527	.1639
160	528	.1353
161	529	.2037
162	530	.1939
163	531	.1604
164	532	.1970
165	541	.2288
166	542	.1953
167	543	.2048
168	544	.2169
169	545	.2579
170	546	.2117
171	547	.1794
172	548	.1327
173	549	.2040
174	550	.1924
175	551	.1555
176	552	.2008
177	601	.2161
178	602	.1950
179	603	.2080
180	604	.2146
181	605	.2547
182	606	.2074
183	607	.1754
184	608	.1411
185	609	.2037
186	610	.1939
187	611	.1604
188	612	.2040
189	621	.2091
190	622	.1881
191	623	.2080
192	624	.2146
193	625	.2547
194	626	.2074
195	627	.1754
196	628	.1411
197	629	.2037
198	630	.1939
199	631	.1604
200	632	.1970
203	641	.2288
213	642	.1953
214	643	.2048
215	644	.2169
216	645	.2579
217	646	.2117
218	647	.1794
219	648	.1474
220	649	.1970
223	650	.1924
233	651	.1540
234	652	.2178
235	701	.2161
236	702	.1950

Lot	Unit	Ownership Percentage
237	703	.2080
238	704	.2146
239	705	.2547
240	706	.2074
252	707	.1754
253	708	.1411
254	709	.2037
255	710	.1939
256	711	.1604
257	712	.2040
258	721	.2091
259	722	.1881
260	723	.2080
261	724	.2146
262	725	.2547
263	726	.2074
264	727	.1754
265	728	.1411
266	729	.2037
267	730	.1939
268	731	.1604
269	732	.1970
270	741	.2288
271	742	.1953
272	743	.2048
273	744	.2169
274	745	.2579
275	746	.2117
276	747	.1794
277	748	.1474
278	749	.1970
279	750	.1924
280	751	.1540
281	752	.2178
282	801	.2161
283	802	.1950
284	803	.2080
285	804	.2146
286	805	.2547
287	806	.2074
288	807	.1754
289	808	.1411
290	809	.2037
291	810	.1939
292	811	.1604
293	812	.2040
294	821	.2091
295	822	.1881
296	823	.2080
297	824	.2146
298	825	.2547
299	826	.2074
300	827	.1754
303	828	.1411
313	829	.2037
314	830	.1939
315	831	.1604
316	832	.1970
317	841	.2288
318	842	.1953
319	843	.2048
320	844	.2169
323	845	.2579
333	846	.2117
334	847	.1794
335	848	.1474
336	849	.1970
337	850	.1924
338	851	.1540
339	852	.2178
340	901	.2161
352	902	.1950
353	903	.2080
354	904	.2146
355	905	.2547
356	906	.2074
357	907	.1754
358	908	.1411
359	909	.2037
360	910	.1939
361	911	.1604
362	912	.2040
363	921	.2091
364	922	.1881
365	923	.2080
366	924	.2146
367	925	.2547
368	926	.2074
369	927	.1754
370	928	.1411
371	929	.2037
372	930	.1939
373	931	.1604
374	932	.1970
375	941	.2288
376	942	.1953
377	943	.2048
378	944	.2169
379	945	.2579
380	946	.2117

Lot	Unit	Ownership Percentage
381	947	.1794
382	948	.1474
383	949	.1970
384	950	.1924
385	951	.1540
386	952	.2178
387	1001	.2161
388	1002	.1950
389	1003	.2080
390	1004	.2146
391	1005	.2547
392	1006	.2074
393	1007	.1754
394	1008	.1411
395	1009	.2037
396	1010	.1939
397	1011	.1604
398	1012	.2040
399	1021	.2091
400	1022	.1881
403	1023	.2080
413	1024	.2146
414	1025	.2547
415	1026	.2074
416	1027	.1754
417	1028	.1411
418	1029	.2037
419	1030	.1939
420	1031	.1604
423	1032	.1970
433	1041	.2288
434	1042	.1953
435	1043	.2048
436	1044	.2169
437	1045	.2579
438	1046	.2117
439	1047	.1794
440	1048	.1474
452	1049	.1970
453	1050	.1924
454	1051	.1540
455	1052	.2178
456	1101	.2161
457	1102	.1950
458	1103	.2080
459	1104	.2146
460	1105	.2547
461	1106	.2074
462	1107	.1754
463	1108	.1411
464	1109	.2037
465	1110	.1939
466	1111	.1604
467	1112	.2040
468	1121	.2091
469	1122	.1881
470	1123	.2080
471	1124	.2146
472	1125	.2547
473	1126	.2074
474	1127	.1754
475	1128	.1411
476	1129	.2037
477	1130	.1939
478	1131	.1604
479	1132	.1970

RECORDED 4/6/82
CONDO BOOK '19' Pgs-63/88

451 UNITS

FORMER BLK 762 LOT 28 JAN. 83 D.F.