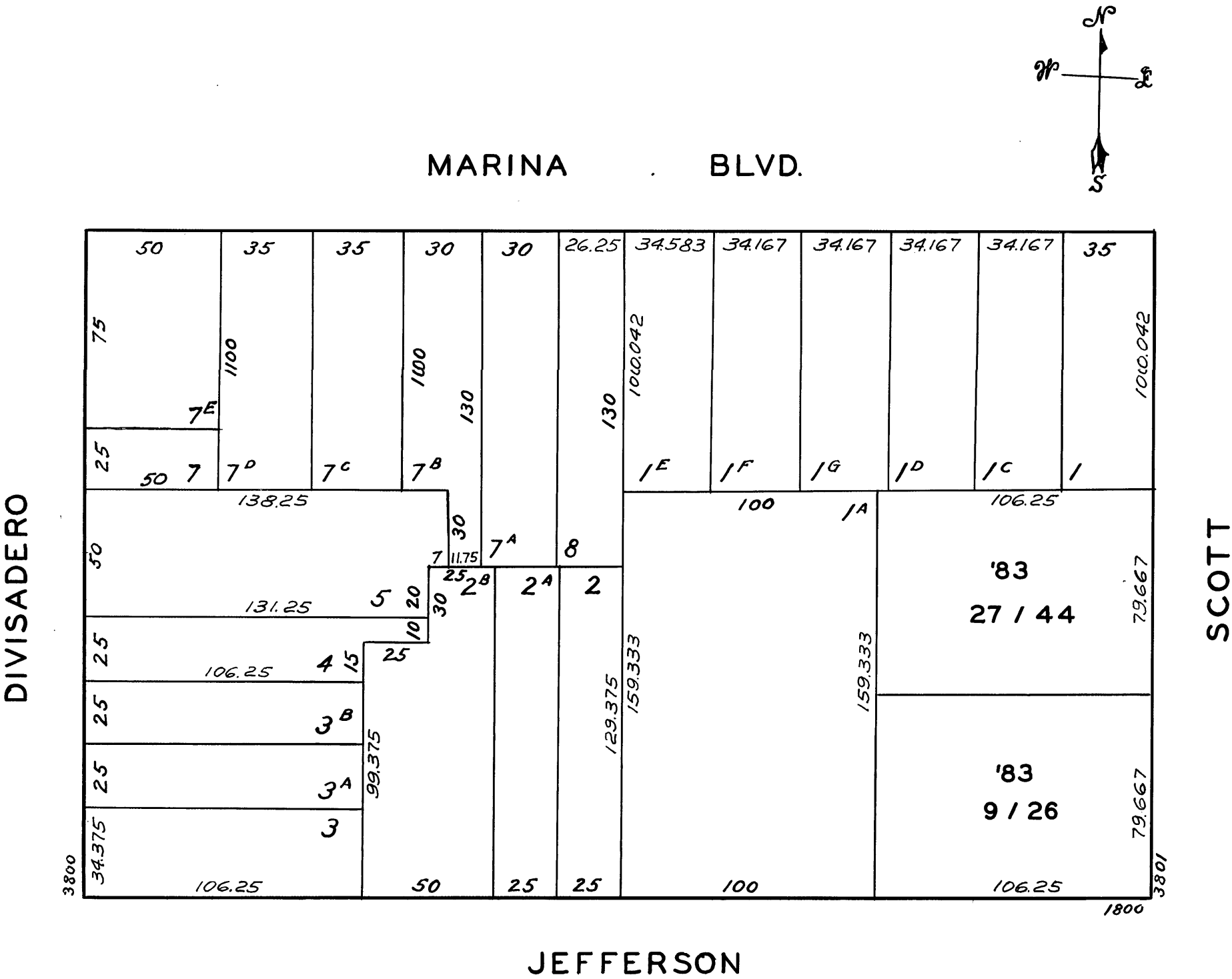


Lot 6 merged into lot 5- 44

REVISED 1983



3825 SCOTT ST. A CONDOMINIUM		
LOT NO.	UNIT NO.	%COMMON AREA
9	101	6.0
10	102	6.0
11	103	5.5
12	104	3.4
13	105	6.7
14	106	4.9
15	201	7.6
16	202	5.8
17	203	5.5
18	204	3.4
19	205	6.6
20	206	4.9
21	301	7.5
22	302	5.8
23	303	5.5
24	304	3.4
25	305	6.6
26	306	4.9

3835 SCOTT ST. A CONDOMINIUM		
LOT NO.	UNIT NO.	%COMMON AREA
27	101	6.9114
28	102	6.5112
29	103	6.5112
30	104	1.2184
31	105	6.9114
32	106	5.9240
33	201	7.1319
34	202	1.3917
35	203	6.7223
36	204	1.2184
37	205	7.1319
38	206	6.1131
39	301	7.3553
40	302	7.1424
41	303	6.9324
42	304	1.2184
43	305	7.3525
44	306	6.3021