

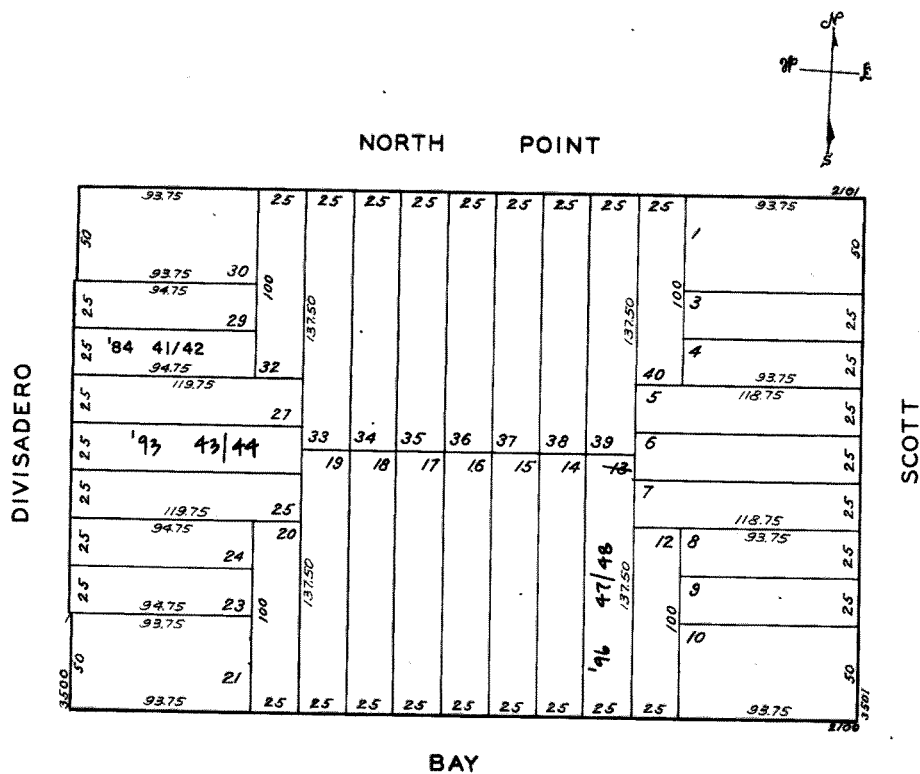
Lot 2 merged into lot 1-44
 " 22 " " " 10-"
 " 31 " " " 21-"
 " 30 "

W A BLK. 476

© COPYRIGHT SAN FRANCISCO
 CITY & COUNTY ASSESSOR 1995

REVISED 1984

" 93
 " 96

3542 & 3544 DIVISADERO ST.

A CONDOMINIUM		
LOT NO.	UNIT NO.	% COMMON AREA
41	1	50
42	2	50

3530-3532 DIVISADERO ST.

A CONDOMINIUM		
LOT	UNIT	% COMM. AREA
43	3530	48.63
44	3532	51.37

2128-2130 BAY ST.

A CONDOMINIUM		
LOT	UNIT	% COMM. AREA
47	1	65.70
48	2	34.30