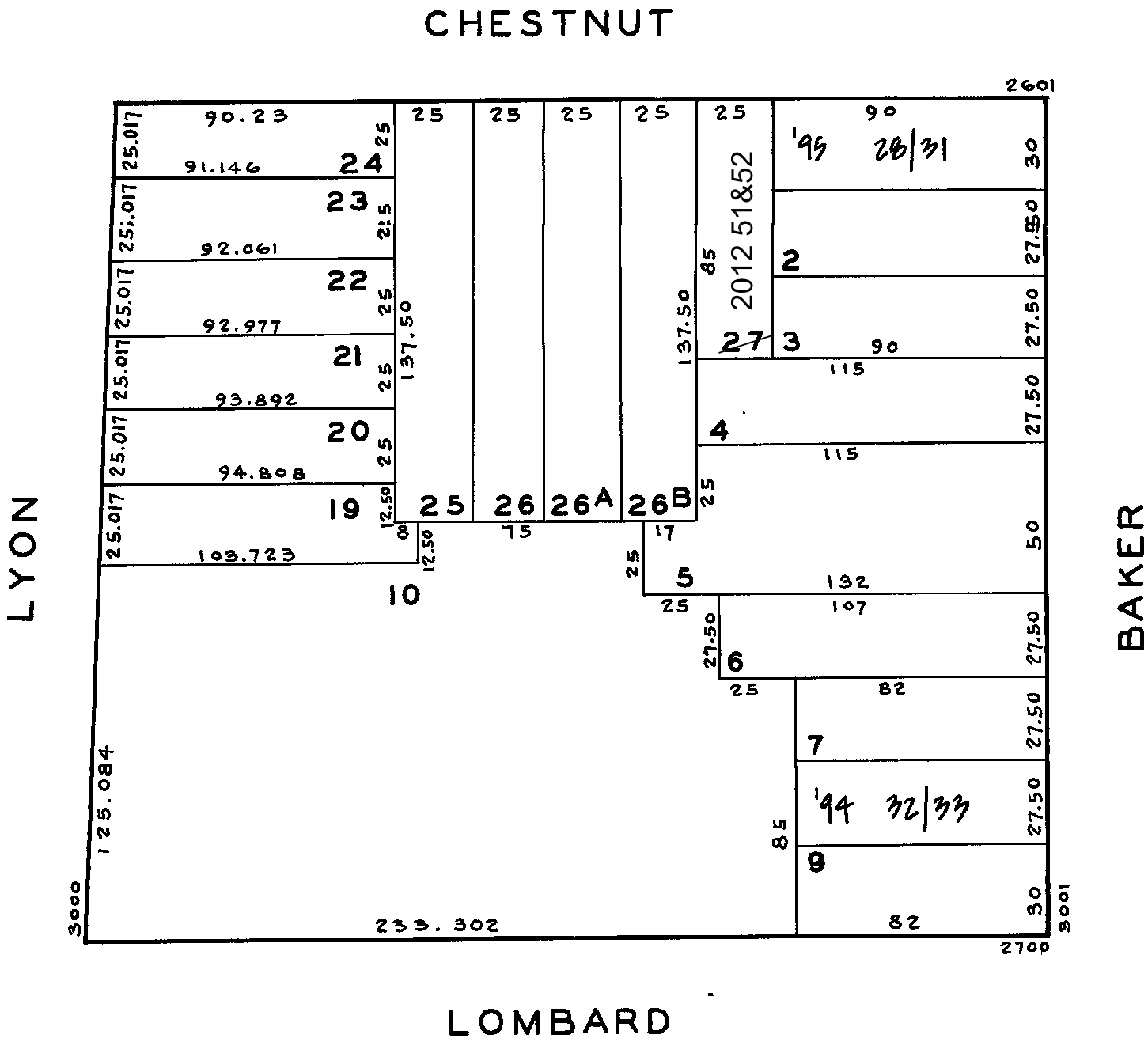
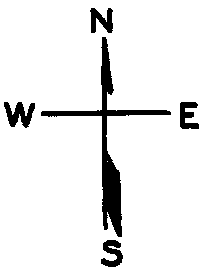


LOTS MERGED  
LOTS INTO LOTS  
11/18 " 10 - '1944'  
lot27 into lots51&52 for 2012 roll

BLOCK RENUMBERED '1924'

REVISED 1999  
" '96  
Revised 2012



2601 CHESTNUT ST		
A CONDOMINIUM		
LOT	UNIT	% COMM AREA
28	1	25
29	2	25
30	3	25
31	4	25

3009 BAKER ST.		
A CONDOMINIUM		
LOT	UNIT	% COMM. AREA
32	1	49.14
33	2	50.86