

ASSESSOR-RECORDER'S OFFICE

Lot 15^d merged into lot 15^c - 44

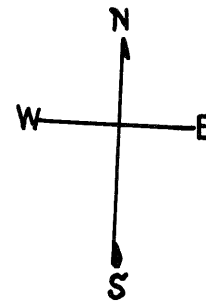
945

© COPYRIGHT SAN FRANCISCO
CITY & COUNTY ASSESSOR 1995

W A BLK. 470

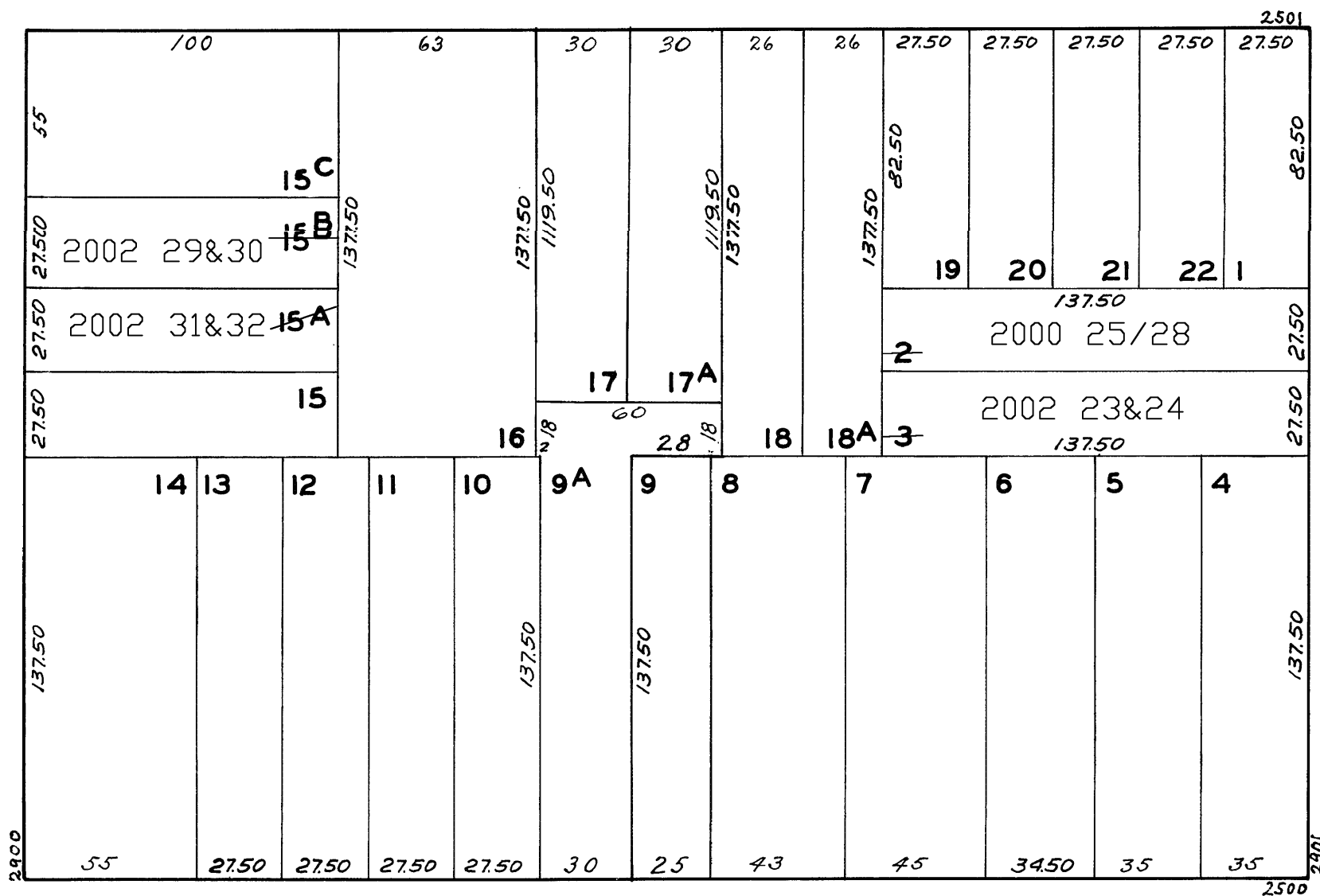
Revised 2000
Revised 2002

lot2 into lots25/28 for 2000 roll
lot3 into lots23&24 for 2002 roll
lot15B into lots29&30 for 2002 roll
lot15A into lots31&32 for 2002 roll



FILBERT

DIVISADERO



SCOTT

UNION

2937 SCOTT ST.			
A CONDOMINIUM			
LOT	UNIT	% COMM.	AREA
25	1	23.00	
26	2	27.07	
27	3	25.17	
28	4	24.76	

2929-2931 SCOTT ST.			
A CONDOMINIUM			
LOT	UNIT	% COMM.	AREA
23	2931	54.61	
24	2929	45.39	

2948-2950 DIVISADERO ST.			
A CONDOMINIUM			
LOT	UNIT	% COMM.	AREA
29	2948	41.68	
30	2950	58.32	

2942-2944 DIVISADERO ST.			
A CONDOMINIUM			
LOT	UNIT	% COMM.	AREA
31	2942	60.79	
32	2944	39.21	