

LOTS MERGED

LOTS INTO LOTS

16	"	15 - '1917'
8A-10A-12	"	10 - '1944'
12A & 14	"	13 - '1944'
22	"	1 - '1925'
17A	"	18 - '1952'

lots13&22 into lots30&31 for 2002 roll

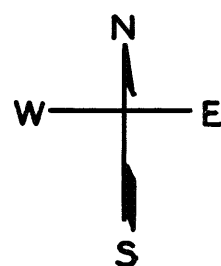
REVISED '57

" 182

" '86

" '89

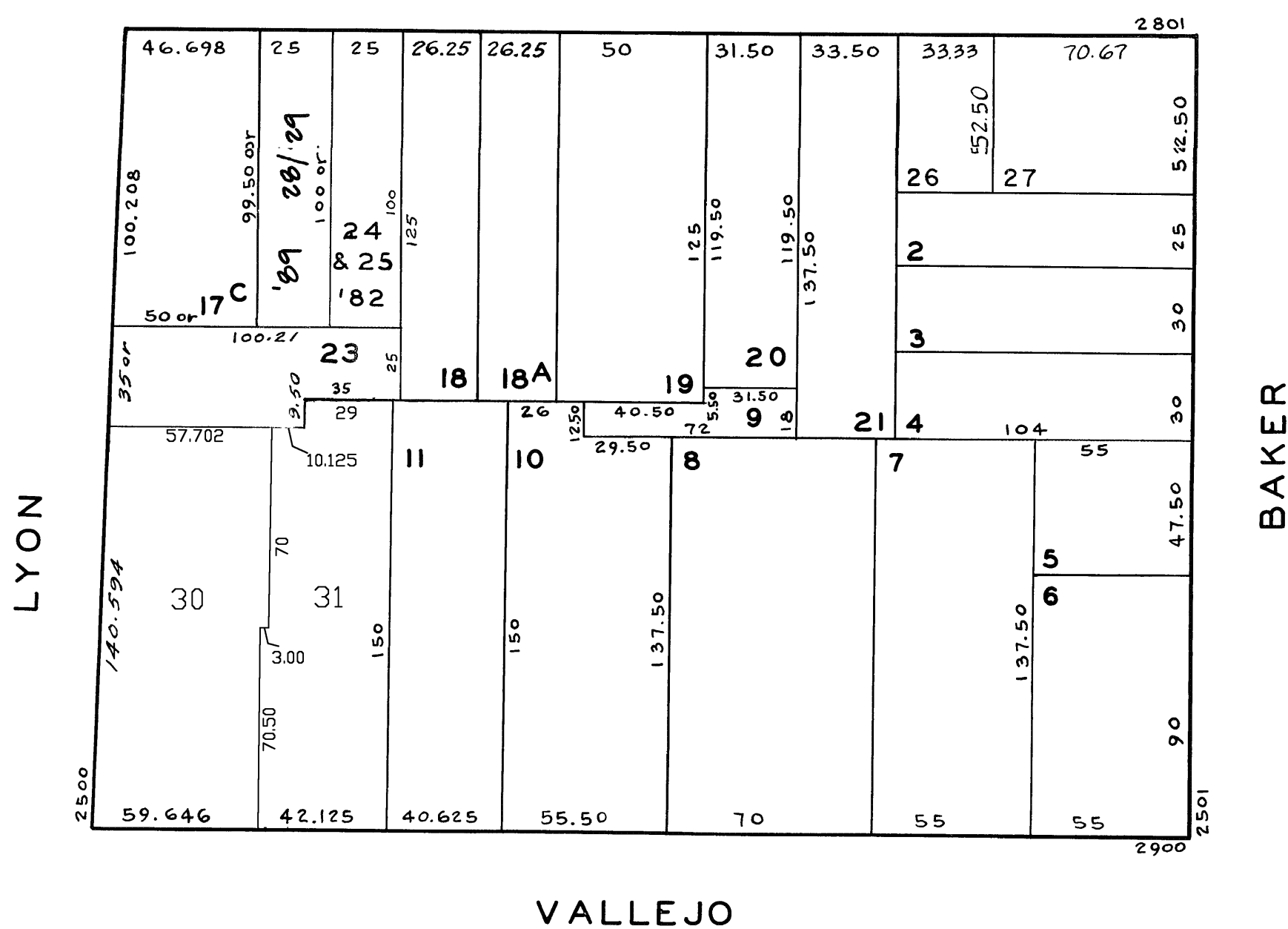
Revised 2002



2867-2869 GREEN ST.
A CONDOMINIUM

<u>LOT NO.</u>	<u>UNIT NO.</u>	<u>% COMMON AREA</u>
24	2867	63.874
25	2869	36.126

GREEN



2873-2875 GREEN ST.

A CONDOMINIUM

LOT	UNIT	% COMM. AREA
28	2873	39.76
29	2875	60.24

