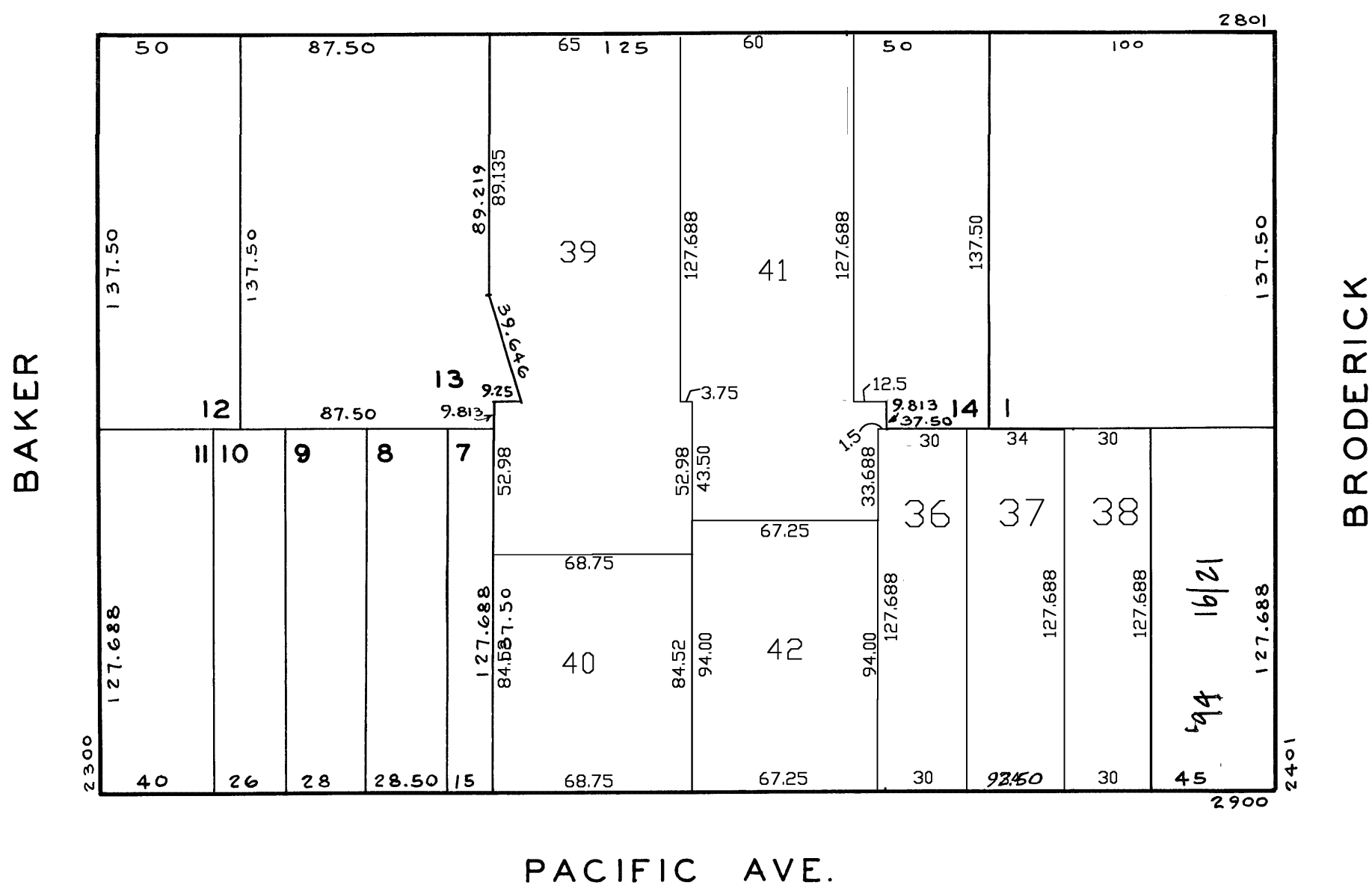
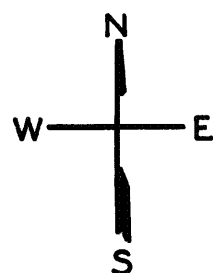


LOTS	INTO	LOT
15	"	1 '1952'
4/5	"	3 '1954'

lot 3 into lots 25/27 for 1999 roll
lot 6 into lots 22/24 for 1999 roll
lot 24 into lots 31/34 for 2000 roll
lots 25/27 into lots 28/30 for 2000 roll
lots28to30&34 into lots35to38 for 2000 roll
lots23&33&35 into lots41&42 for 2002 roll
lots22&31&32 into lots39&40 for 2003 roll

Revised '99
Revised 2000
Revised 2002
Revised 2003

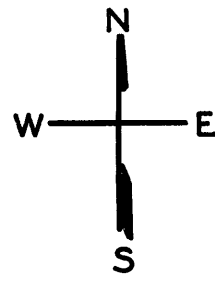


<u>2900 PACIFIC AVE</u>		
<u>A CONDOMINIUM</u>		
<u>LOT</u>	<u>UNIT</u>	<u>% COMM. AREA</u>
16	101	14.10
17	102	16.82
18	201	12.31
19	202	18.94
20	301	19.41
21	302	18.82

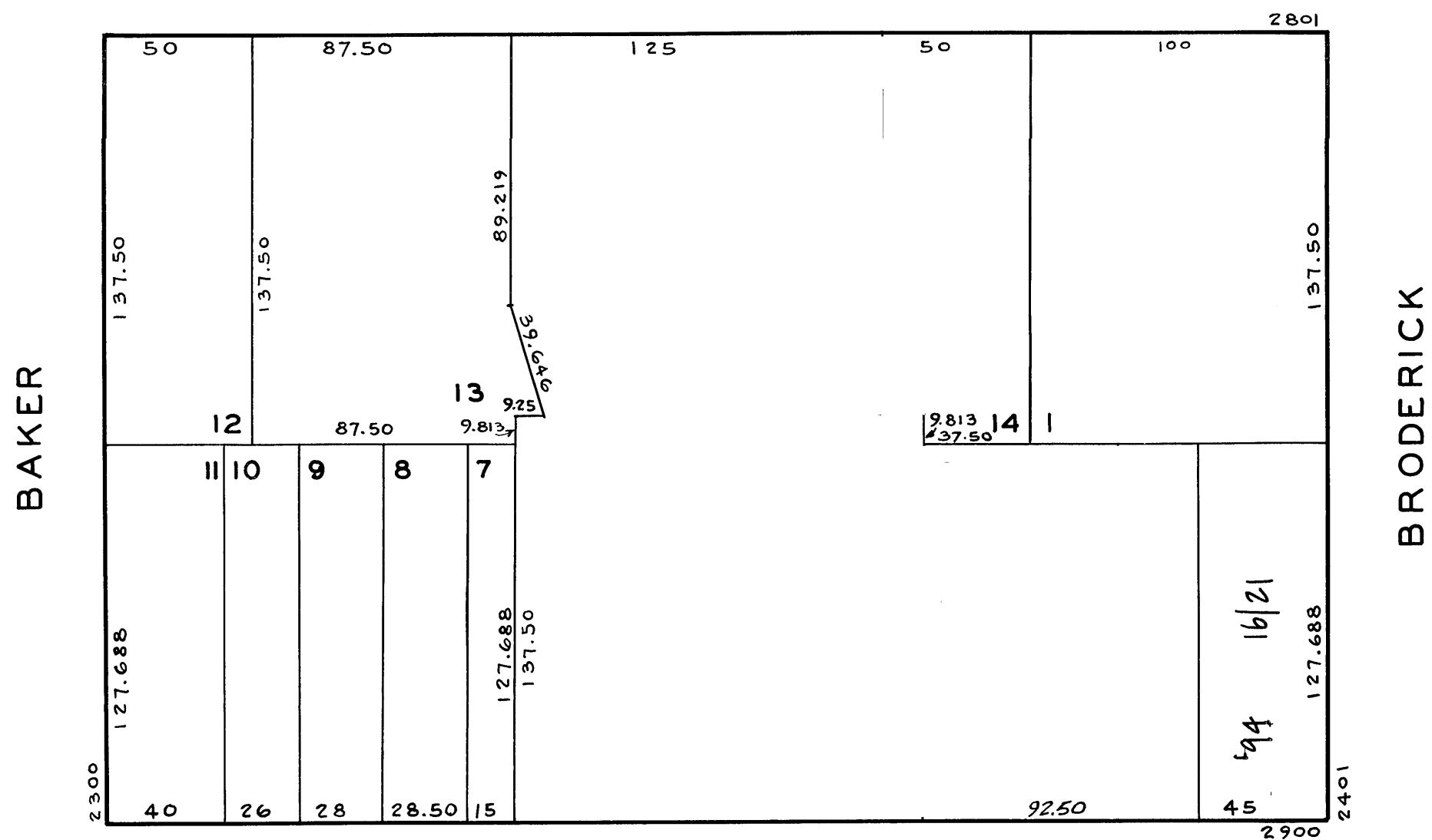
LOTS MERGED

LOTS	INTO	LOT
15	"	1 '1952'
4/5	"	3 '1954'

REVISED 1994



BROADWAY



PACIFIC AVE.

2900 PACIFIC AVE

A CONDOMINIUM

LOT	UNIT	% COMM. AREA
16	101	14.10
17	102	16.82
18	201	12.31
19	202	18.94
20	301	19.41
21	302	18.82