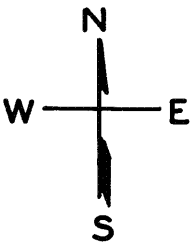


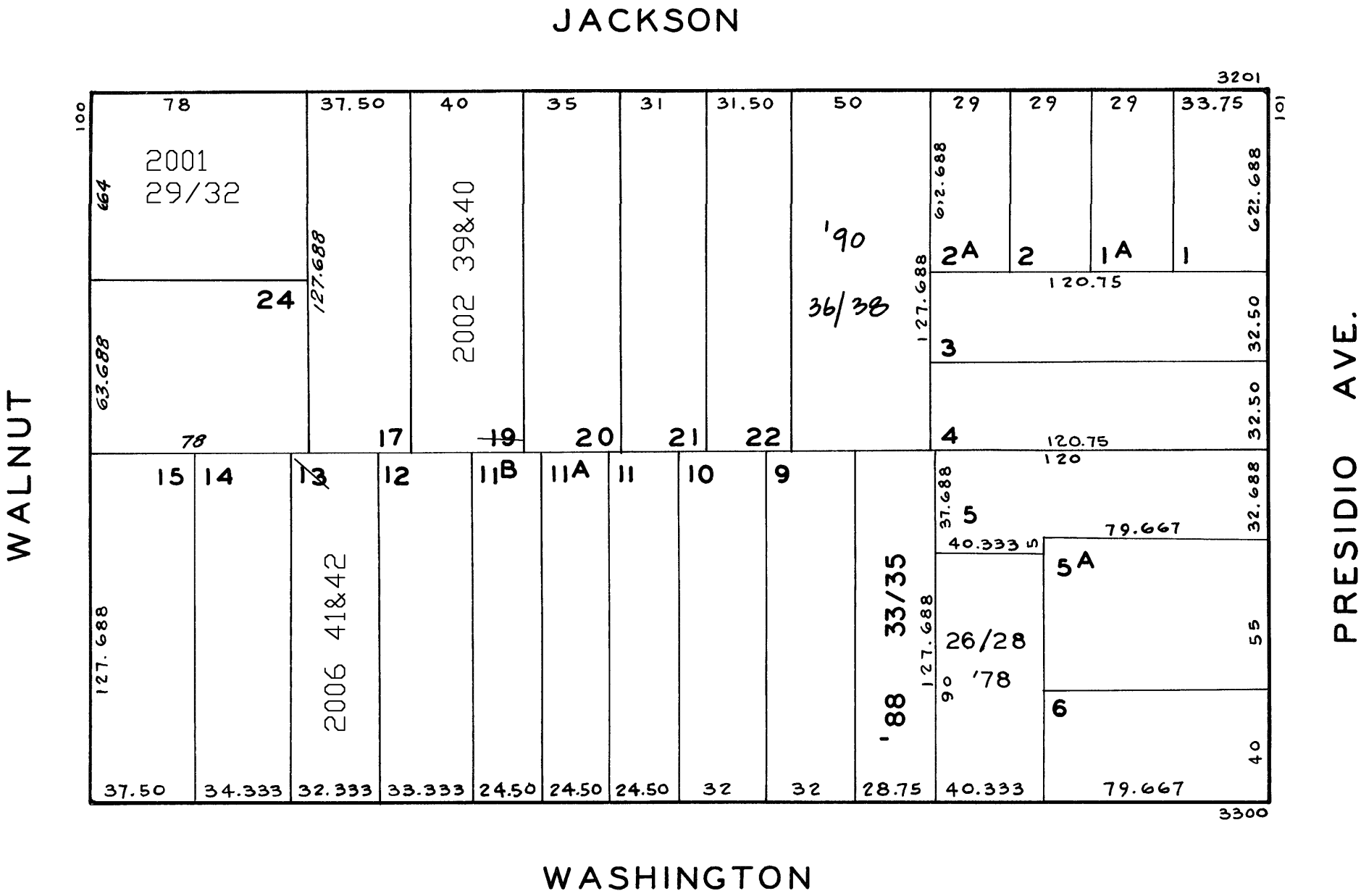
LOTS MERGED  
LOTS INTO LOTS  
18 " 17 - "1946"

Lot 25 into lots 29/32 for 2001 roll  
lot19 into lots39&40 for 2002 roll  
lot13 into lots41&42 for 2006 roll

REVISED '58  
" '78  
" '88  
" '90  
Revised 2001  
Revised 2002  
Revised 2006



3267-3271 JACKSON ST.			
A CONDOMINIUM			
LOT	UNIT	% COMM.	AREA
39	3267	65	
40	3271	35	



WASHINGTON PLACE			
A CONDOMINIUM			
LOT NO.	UNIT NO.	% COMMON AREA	
26	1	1/3	
27	2	1/3	
28	3	1/3	

3326-3326A-3328 WASHINGTON ST.			
A CONDOMINIUM			
LOT	UNIT	% COMM. AREA	
33	3326A	13.614	
34	3326	40.099	
35	3328	46.287	

3378-3380 WASHINGTON ST.			
A CONDOMINIUM			
LOT	UNIT	% COMM. AREA	
41	3378	60	
42	3380	40	

100-106 WALNUT ST.			
A CONDOMINIUM			
LOT	UNIT	% COMM. AREA	
29	100	27.301	
30	106	20.595	
31	102	27.675	
32	104	24.429	

3233 JACKSON ST.			
A CONDOMINIUM			
LOT	UNIT	% COMM. AREA	
36	1	47.268	
37	2	26.366	
38	3	26.366	