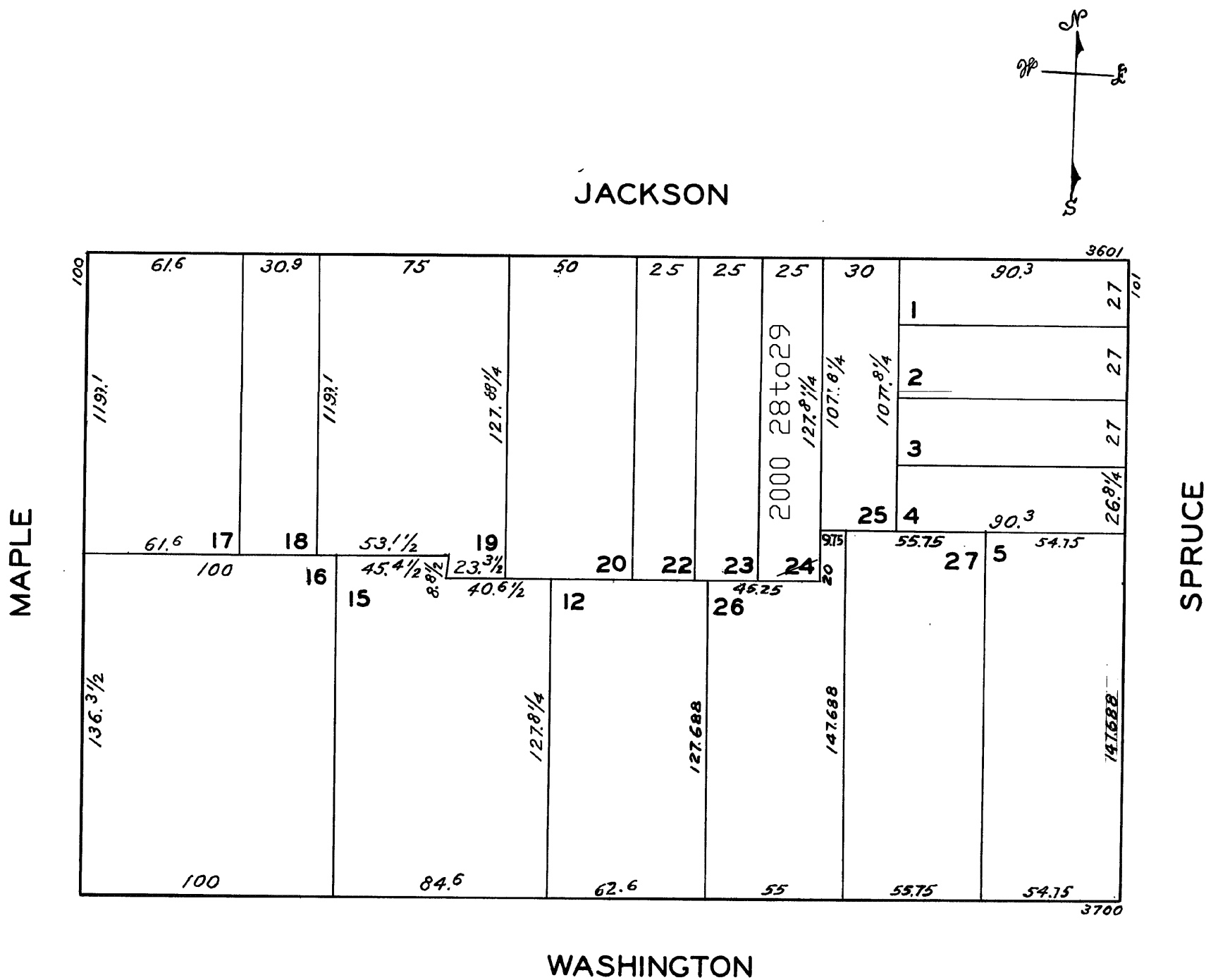


Lots 13-14 merged with lot 12-44
 " 10-11 " " 9-44
 " 21 " " 20-44
 " 42-7-8 merged with lot 5-44
 " 9 " into " 6-49"
 lot 24 into lots 28 & 29 for 2000 roll

© COPYRIGHT SAN FRANCISCO
 CITY & COUNTY ASSESSOR 1995

988
 WA BLK 836
 REVISED 1959
 Revised 2000



3629-3631 JACKSON ST.			
A CONDOMINIUM			
LOT	UNIT	% COMM.	AREA
28	3629	55	
29	3631	45	