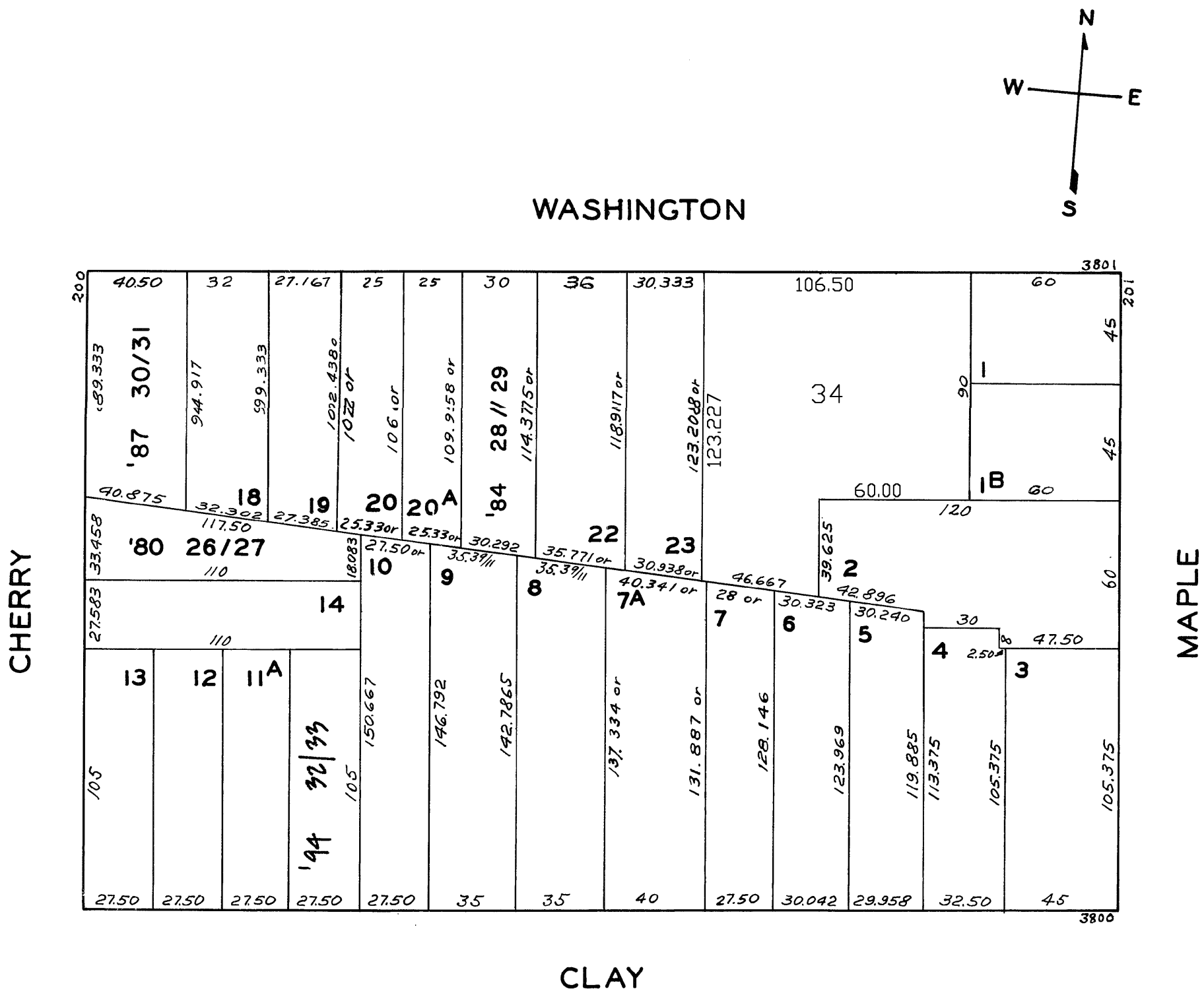


W A BLK. 844

REVISED '80
" '84
" '87
" '94
Revised 2002

LOTS MERGED
LOTS INTO LOT
15 10 1919
lots 1A, 24 & 25 into lot 34 for 2002 roll



222-224 CHERRY ST.		
A CONDOMINIUM		
LOT NO.	UNIT NO.	% COMMON AREA
26	224	48.694
27	222	51.306

3859-3861 WASHINGTON ST.		
A CONDOMINIUM		
LOT NO.	UNIT NO.	% COMMON AREA
28	3859	50
29	3861	50

3899 WASHINGTON ST./200 CHERRY ST.		
A CONDOMINIUM		
LOT	UNIT	% COMM. AREA
30	3899	51.487
31	200	48.513

3876-3878 CLAY ST.		
A CONDOMINIUM		
LOT	UNIT	% COMM. AREA
32	3876	60
33	3878	40