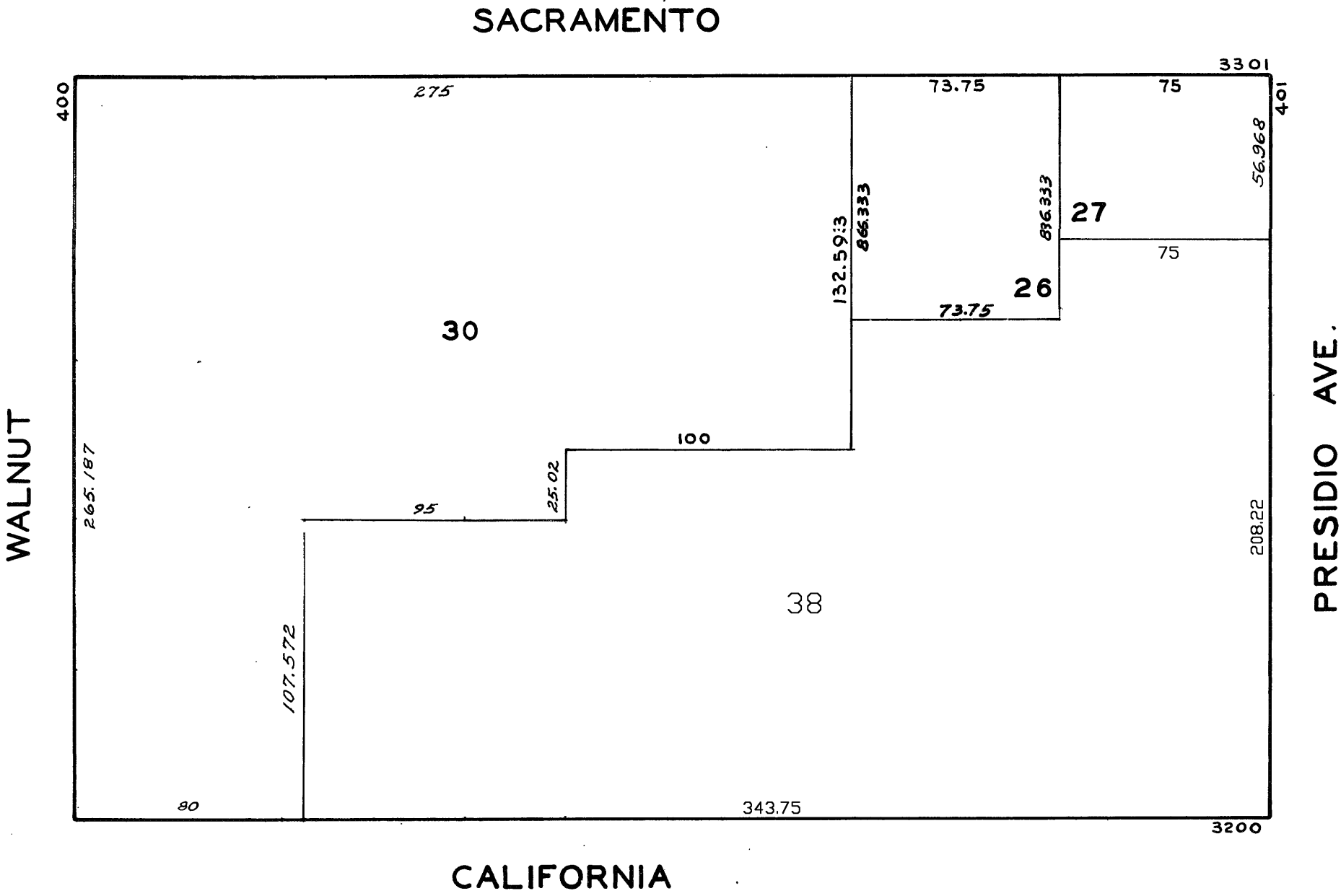
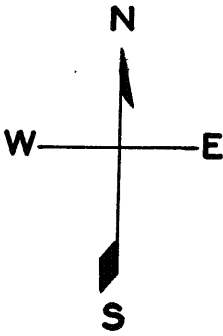


LOTS		MERGED	
LOTS	19 & 20	MERGED	INTO LOT 6A "1943"
"	14	"	" 13 "1944"
"	21A & 21B	"	" 21 "1944"
"	7	"	" 6 "1947"
"	4	"	" 3 "1951"

lots 5,6,24,25,28,29,31 to 37 into lot 38 for 2002 roll

**1021**  
WA BLK 800  
REVISED 1957  
" 1959  
" 1961  
" 1979  
" 1988  
Revised 2002



3266 CALIFORNIA ST		
A CONDOMINIUM		
LOT	UNIT	%COMM.AREA
31	101	15.23
32	102	9.14
33	103	8.13
34	201	15.23
35	202	18.52
36	301	15.23
37	302	18.52