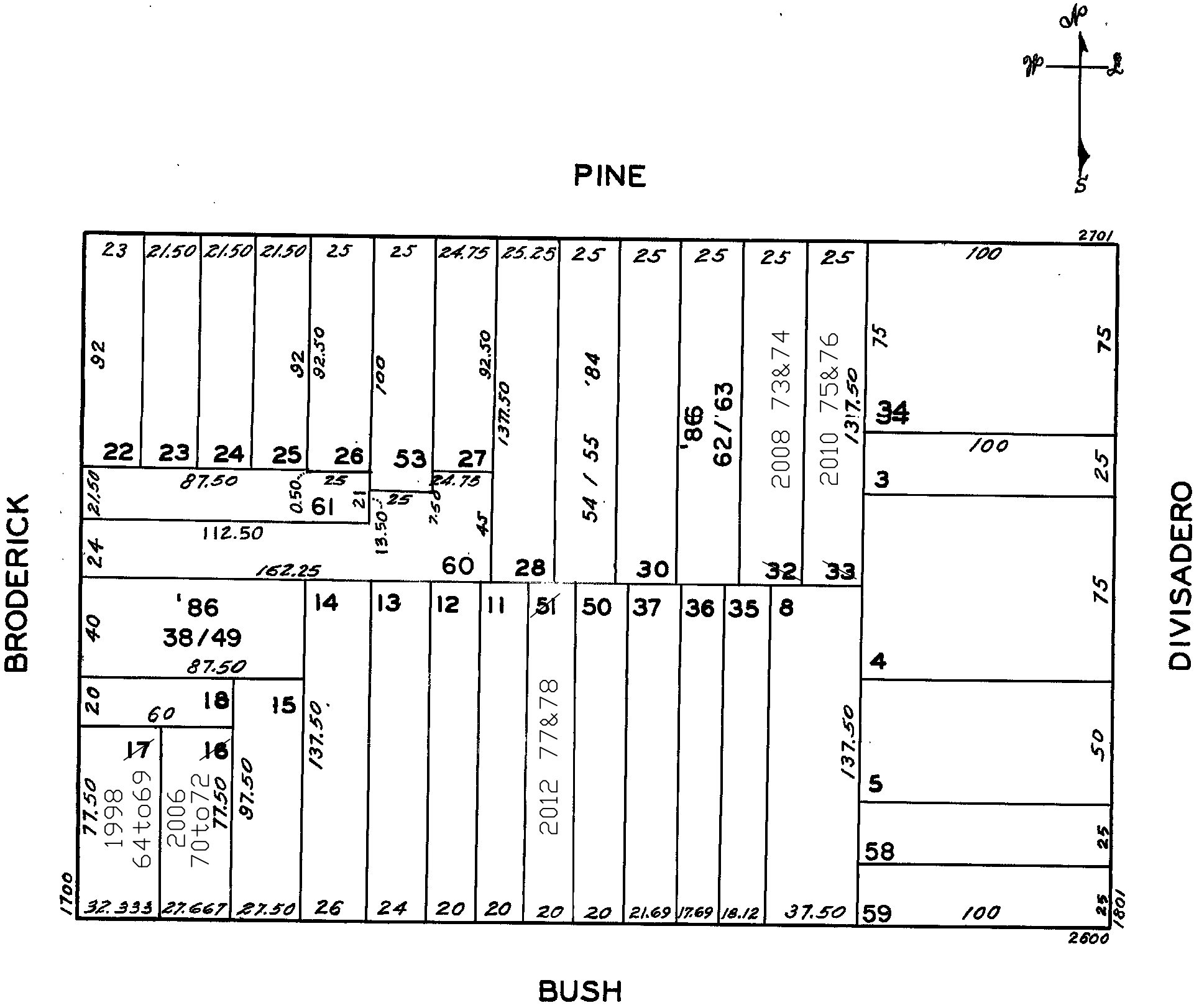


W A BLK. 502

LOTS MERGED  
LOTS 6 INTO LOT 5 1944  
2 " 1 44  
20,264 52,53 '83  
29 54,55 '84  
lot17 into lots64to69 for 1998 roll  
lot16 into lots70to72 for 2006 roll  
lot32 into lots73&74 for 2008 roll  
lot33 into lots75&76 for 2010 roll  
lot51 into lots77&78 from 2012 roll

REVISED '72  
REVISED '79  
" '82  
" '83  
" '84  
" '85  
" '86  
Revised 1998  
Revised 2006  
Revised 2008  
Revised 2010  
Revised 2012



BUSH/BRODERICK BUILDING  
2694-96-98 BUSH ST.  
1702-04-06 BRODERICK ST.  
A CONDOMINIUM

LOT	UNIT	% COMM. AREA
64	2694	22
65	2696	20
66	2698	16
67	1702	11
68	1704	15
69	1706	16

2686-2690 BUSH ST.  
A CONDOMINIUM

LOT	UNIT	% COMM. AREA
70	2686	33.34
71	2688	33.33
72	2690	33.33

2715-2717 PINE ST.

LOT	UNIT
73	2715
74	2717

2725-2727 PINE ST.  
A CONDOMINIUM

LOT	UNIT	% COMM. AREA
54	2727	50
55	2725	50

2719-2721 PINE ST.  
A CONDOMINIUM

LOT	UNIT	% COMM. AREA
62	2719	48.97
63	2721	51.03

1730 BRODERICK ST.  
A CONDOMINIUM

LOT	UNIT	% COMM. AREA
38	1	9.373
39	2	9.643
40	3	6.935
41	4	7.383
42	5	9.373
43	6	9.643
44	7	6.935
45	8	7.383
46	9	9.373
47	10	9.642
48	11	6.935
49	12	7.382