

**© COPYRIGHT SAN FRANCISCO
CITY & COUNTY ASSESSOR 1995**

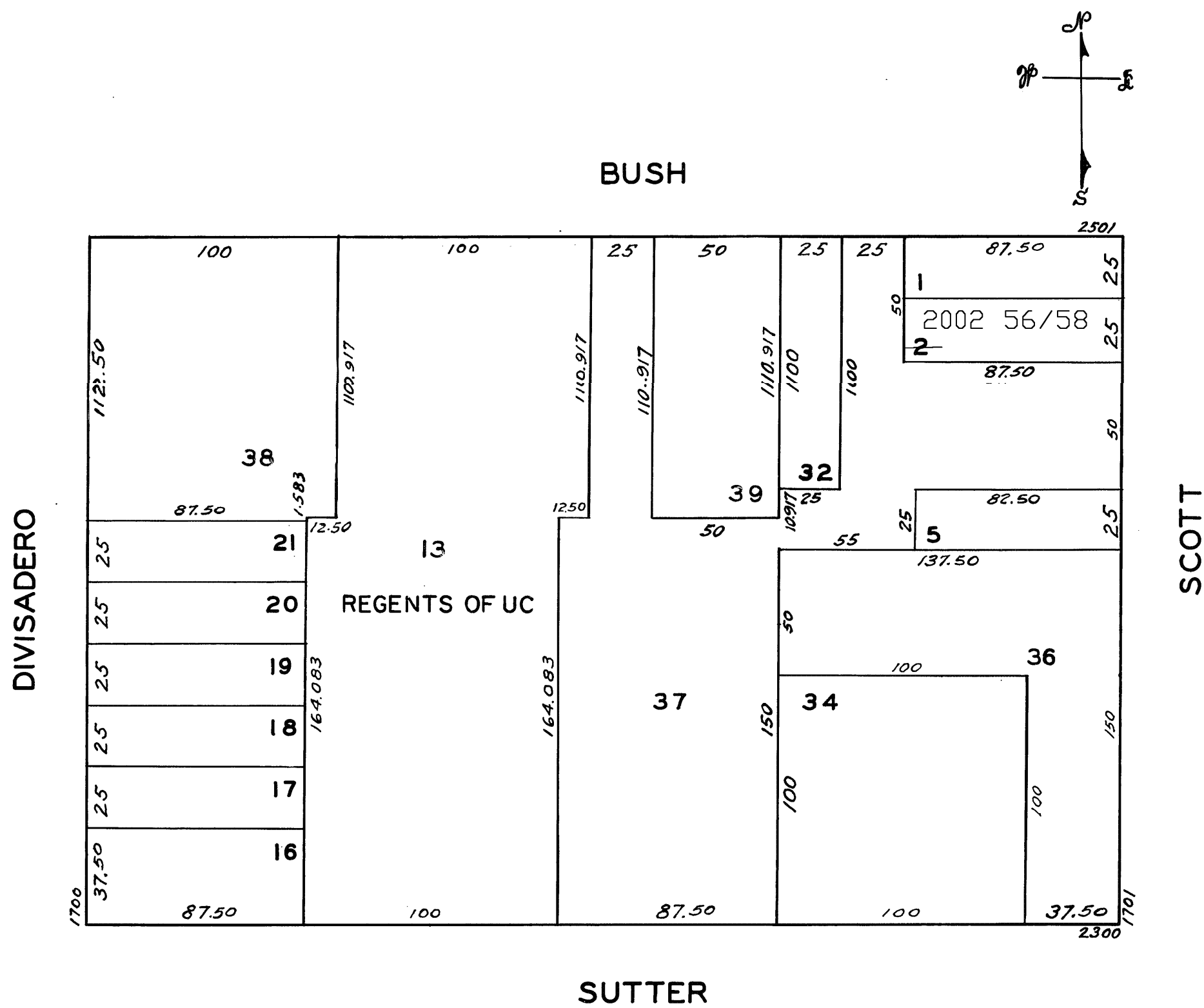
W A BLK. 458

LOTS 26 INTO LOT 25 1944
14/15-25
27/28 13 "49"

lot2 into lots56/58 for 2002 roll

REVISED	'57
≈	'58
≈	'65
≈	'66
"	'73
"	'91

Revised 2002



<u>1733 SCOTT ST.</u>		
<u>A CONDOMINIUM</u>		
<u>LOT</u>	<u>UNIT</u>	<u>% COMM. AREA</u>
56	1	31.58
57	2	36.72
58	3	31.70