

LOTS MERGED

LOTS INTO LOT
3 2 '1944'

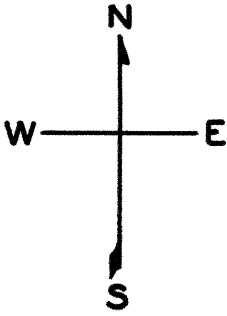
lot13 into lots39&40 for 2008 roll
lot14 into lots41&42 for 2009 roll
lot26 into lots43/46 for 2014 roll
Lot 17 into lots 47 to 49 for 2015 roll

REVISED '72

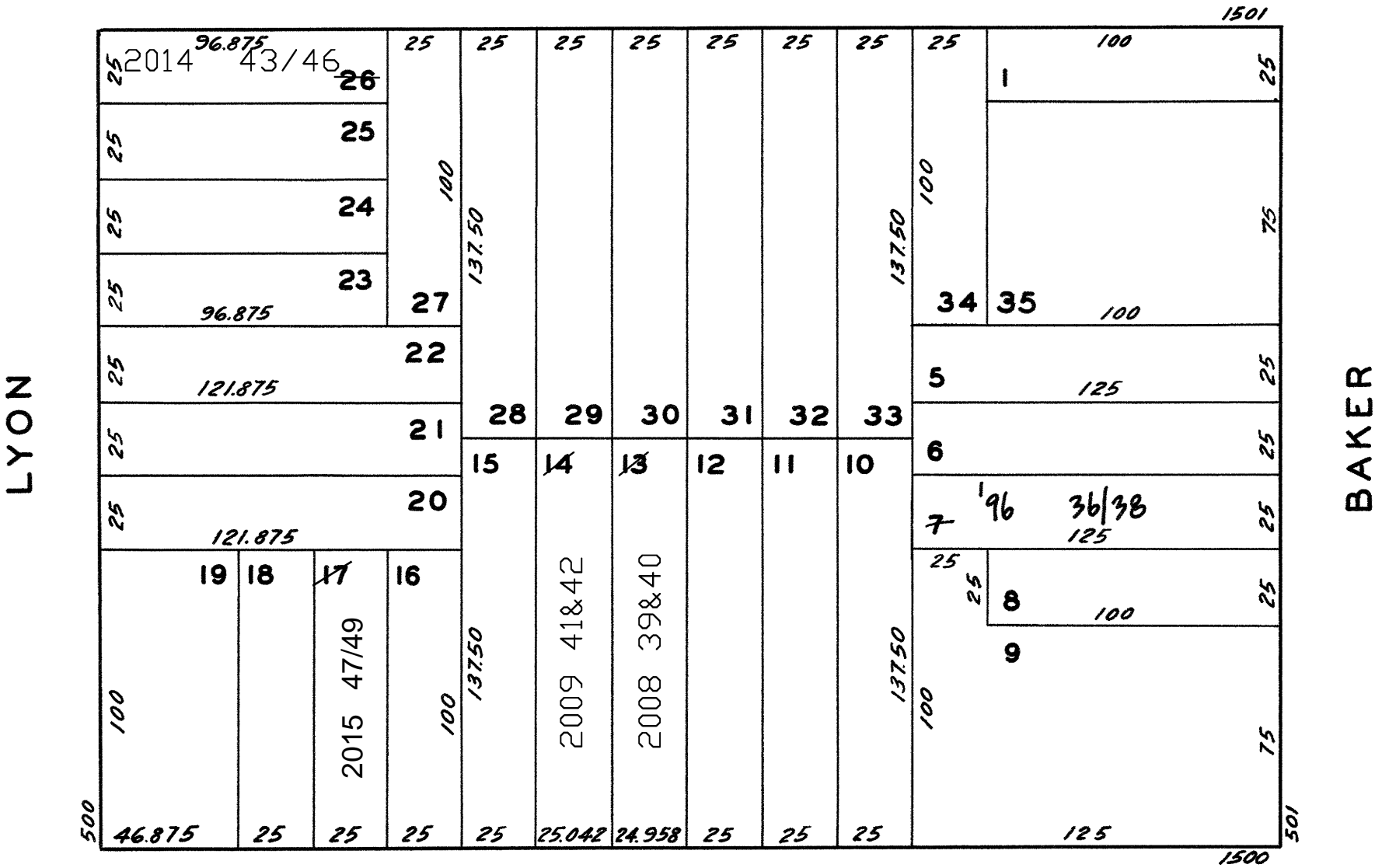
" '96

Revised 2008
Revised 2009
Revised 2014

REVISED 2015



FULTON



GROVE

525-527-529 BAKER ST.		
A CONDOMINIUM		
LOT	UNIT	%COMM. AREA
36	525	31.22
37	527	33.36
38	529	35.42

1548-1550 GROVE ST.	
LOT	UNIT
39	1548
40	1550
1554-1556 GROVE ST.	
LOT	UNIT
41	1556
42	1554